

On this the 28th day of July, 1986, the Honorable Commissioners' Court met in regular session with the following members present:

Royce C. Smith	County Judge
R. E. Smith	Commissioner, Prct. # 1
Billy Joe McGee	Commissioner, Prct. # 2
Eldridge Ellison	Commissioner, Prct. # 3
Chester D. Cox, Sr.	Commissioner, Prct. # 4
Nadine Gary	Clerk of the Court

Court was called to order by Judge Royce C. Smith. A letter from District Attorney Bill A. Martin was reviewed by the Court concerning the seperating of the County Clerk's Office and District Clerk's Office, due to the increasing Civil and Criminal docket of District Court. Also, since the County has a population of at least 8,000, it is mandatory that the office of County and District Clerks be divided. Motion was made by Commissioner R. E. Smith, seconded by Commissioner Billy Joe McGee to seperate these offices, effective January 1, 1987. Motion carried. See Exhibit "A" attached.

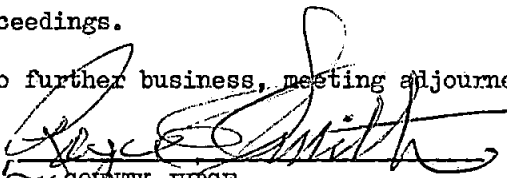

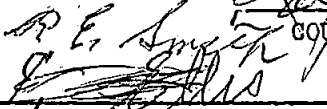
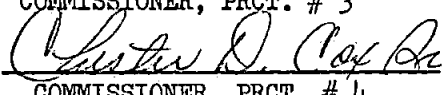
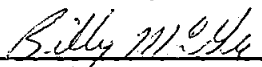

Attorney R. Earl Lord, along with Mr. and Mrs. Earl Brock, appeared before the Court asking the Court to make a decision concerning the street between the Brock property and Esslinger's. This property was located in the L. C. Hammock Subdivision. Motion was made by Commissioner Billy Joe McGee, seconded by Commissioner Chester Cox stating that this is not a County maintained road. Motion carried. See Exhibit "B".

The monthly bills were reviewed and discussed. Motion was made by Commissioner Billy McGee, seconded by Commissioner Chester Cox to approve the payment of bills. Motion carried.

The Quarterly Report was reviewed. Motion was made by Commissioner Billy McGee, seconded by Commissioner Chester Cox to accept the report. Motion carried.

The Court reviewed a request from Sam Rayburn Estates for a designated *recreational* and swimming area along the property (Sam Rayburn Lake) of subdivision. The Court asked that the Corp of Engineers be contacted in regards to the proceedings.

There being no further business, meeting adjourned.

 _____ COUNTY JUDGE	 _____ COMMISSIONER, PRCT. # 3
 _____ COMMISSIONER, PRCT. # 1	 _____ COMMISSIONER, PRCT. # 4
 _____ COMMISSIONER, PRCT. # 2	
 _____ CLERK OF THE COURT	



Office of

DISTRICT ATTORNEY

First Judicial District of Texas

Newton, Sabine and San Augustine Counties

BILL A. MARTIN
DISTRICT ATTORNEY

P. O. Box 496
Phone 379-8581
Newton, Texas 75966

July 18, 1986

County Judge Royce Smith
Commissioners Court of Sabine County
Sabine County Courthouse
Hemphill, Texas 75948

Gentlemen:

I has come to my attention that interest is being shown in seperating the County Clerk's Office and District Clerk's Office into two entities.

Please accept my recommendation that the Office be seperated. The ever increasing Civil and Criminal docket of District Courts certainly indicate this to be very acceptable. The burden upon one office to handle the load of two offices is onerous and lends itself to inefficiency and error.

It is also noted that if the county has a population of 8,000 it is a mandatory division of the office of County and District Clerks. It is my understanding that this population plateau has been reached as of the last census.

Very truly yours,

Bill A. Martin
BILL A. MARTIN

BAM/vcs

Exp. list A

Exhibit B

FISH CLEANING 20X20 WATER PUMP

A.D. ALLEN 1325-450

TOLL DO

BROCK

GRASS

BROCK GRASS

BROCK

BROCK

HOUSE

BROCK APT

GARAGE

BROCK

BROCK

2 STORY HOME

12 DRIVEWAY

DRIVEWAY

ESSLINGER

ESSLINGER

ESSLINGER

STORAGE TRAILER

G.E. KEAYON

G.E. KEAYON

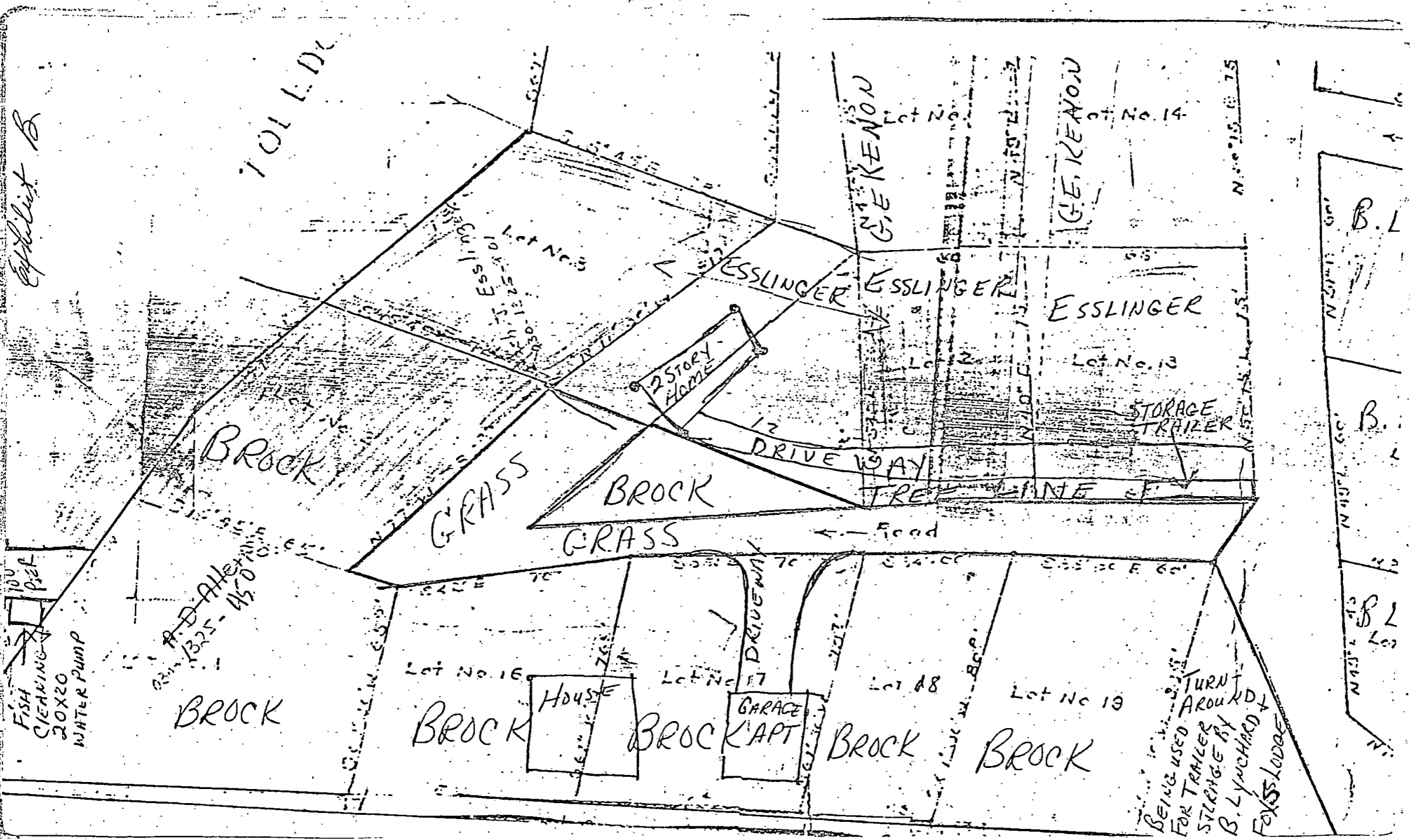
B.L.

B.L.

B.L.

BEING USED FOR TRAILER STORAGE BY B. LYNCHARD FOX LODGE

TURN AROUND



I, NADINE GARY, COUNTY CLERK OF SABINE COUNTY, TEXAS DO HEREBY CERTIFY THAT
THE FOREGOING INSTRUMENT WAS FILED _____ AND DULY RECORDED _____, 1986, AT

1986 AT 9:00 O'CLOCK 11 'CLOCK 11 .M.

NADINE Gary CLERK

Deann Powell DEPUTY