

Monday, November 28, 1987, the Honorable Commissioners' Court met in regular session at 8:30 A. M., with the following members present:

Royce C. Smith	County Judge
R. E. Smith	Commissioner, Prct. # 1
Billy J. McGee	Commissioner, Prct. # 2
Eldridge Ellison	Commissioner, Prct. # 3
Chester Cox, Sr.	Commissioner, Prct. # 4
Nadine Gary	Clerk of the Court

Meeting was called to order by Judge Royce Smith, with Brother Clarence Howell leading the opening prayer.

Minutes of the last meeting were read by County Clerk, Nadine Gary. Commissioner Chester Cox made a motion, seconded by Commissioner Billy J. McGee, to approve minutes. Motion carried.

County Treasurer, Ollie Faye Sparks, gave her report for the month of October, showing the County expenditures and remaining balances.

After the inspection of monthly bills, Commissioner McGee made a motion, seconded by Commissioner Smith, to approve payment. Motion carried.

Judge Smith and Tax Collector, Diane Husband, explained Proposition 10 which was voted on November 3. The vote in Sabine County was 570 for, and 870 against. It passed State wide by 2 %. This proposition 10 exempts boats, aircraft, and recreational vehicles from ad valorem taxes. Since Sabine County residents were already exempt, this will not effect us.

Melvin Edwards with the U. S. Forest Service, addressed the Court concerning two roads the Court recently accepted as County roads. One is known as the Speights Cemetary Road, and is off the Mable Henson Road in Precinct 4. Commissioner Cox made a motion, seconded by Commissioner McGee, to accept the Amendment Resolution amending the resolution signed by the Court in April, 1975, and recorded in May, 1975. All voted for.

The other road is in Precinct 2, and is known as Little Boy Neal Road. Commissioner McGee made a motion, seconded by Commissioner Ellison, to accept the resolution presented by the Forest Service. All voted for. Exhibits are attached for both resolutions.

Raymond Parr, with the Parr Agency in Jasper, presented the Court his Flexible Benefit Plan. Although a discussion followed, no action was taken at this time.

Commissioner McGee made a motion, seconded by Commissioner Ellison, that the County observe the following holidays: Thursday and Friday, Nov. 26 and 27, for Thanksgiving. Thursday and Friday, December 24 and 25, for Christmas, and Thursday and Friday, December 31 and January 1, for New Year's. Motion carried.

Bill Whitehead, with Deep East Texas Council of Government, presented the 9-1-1 Fact Sheet, and the Emergency Telephone System to the Court. This is an optional service, and after some discussion, Commissioner Smith made a motion, seconded by Commissioner McGee, to set public hearings on this system after the first of 1988. Motion carried.

Tax Collector, Diane Husband, told the Court she will do a complete article on voter registration in the near future.

Meeting adjourned until 10:00 A. M.

When Court re-convened, Walter Diggles had a public hearing to review comments on the proposed Community Grant application. The application presented is for 2.1 miles of Dayton Godwin Road in Precinct 1. Commissioner Smith made a motion, seconded by Commissioner McGee, to approve Resolution. All voted for.

Commissioner McGee made a motion, seconded by commissioner Ellison, that meeting adjourn. Motion carried.

Ray Smith
COUNTY JUDGE

A. E. Smith
COMMISSIONER, PRCT. # 1

E. Ellison
COMMISSIONER, PRCT. # 3

Billy McGee
COMMISSIONER, PRCT. # 2

Chester D. Carter
COMMISSIONER, PRCT. # 4

Radnie King
CLERK OF THE COURT



United States
Department of
Agriculture

Forest
Service

Yellowpine Ranger District
P. O. Box F
Hemphill, Texas 75948

Reply to: 5460

Date: November 25, 1987

Royce C. Smith
County Judge, Sabine Co.
P.O. Box 716
Hemphill, TX 75948

Dear Judge Smith:

Attached, find your signed copies of the Ammendments to the Resolution Order for the Little Boy Neal and Speights Cemetary Roads. These are ready to record in the Commissioner Court Records. After the documents are recorded, please send us a certified copy indicating the Volume/Page of the Commissioner Court Records where they are recorded as well as the date of recording.

We have mailed the ammendment to the Coop. Maintenance Agreement to the Forest Supervisor for his approval.

We are processing the Public Road Easement applications for these roads. It will probably be after the first of the year before the easements are granted.

We appreciate your continued cooperation.

Sincerely,

Isaac W. Hawkins

ISAAC W. HAWKINS
District Ranger

Attachments

SABINE COUNTY COMMISSIONER'S COURT
HEMPHILL, TEXAS

AMENDMENT TO RESOLUTION ORDER
DATED APRIL 14, 1975
RECORDED MAY 1, 1975
COMMISSIONER COURT RECORDS
VOLUME P, PAGE 510

ESTABLISHING CERTAIN ROADS IN
SABINE COUNTY, TEXAS

LET IT BE KNOWN BY ALL that the Commissioner's Court of Sabine County, Texas, during a regular court meeting, has declared that the pre-existing road described below and known as the Speights Cemetary Road is a public road.

General description for the Speights Cemetary Road is as follows:

AN EASEMENT FOR AN EXISTING ROAD, as now constructed on, over and across the John Taylor Survey, A-197, dated July 25, 1848, the Nathaniel Hamilton Survey, A-119, dated August 27, 1890, and the Rufus Jackson Survey, A-136, dated February 12, 1845, Sabine County, Texas;

BEGINNING at a point 1550 feet \pm generally southwest of Corner 7, F.S. Tract S-1Au, point being in the center of the Mary Williams Road (Mabel-Hinson Cutoff)

THENCE, in a southeasterly direction, 2587 feet \pm to a point of intersection with the property boundary, which is a point 39 feet \pm south of Corner 8, F.S. Tract S-2c;

CONTINUING in a southeasterly direction, 2165 feet \pm to the point of ending, which lies 1717 feet \pm generally southeast of Corner 8, F.S. Tract S-2c (point of ending also lies 195 feet \pm South 13° West of Temple Eastex corner 2292 in TE Compartment 2279), said road being 4752 feet \pm in length.

Said road is further described and depicted on the attached map and marked as Exhibit A-1.

COUNTY JUDGE

DATE

COMMISSIONER, PRECINCT NO. 1

COMMISSIONER, PRECINCT NO. 2

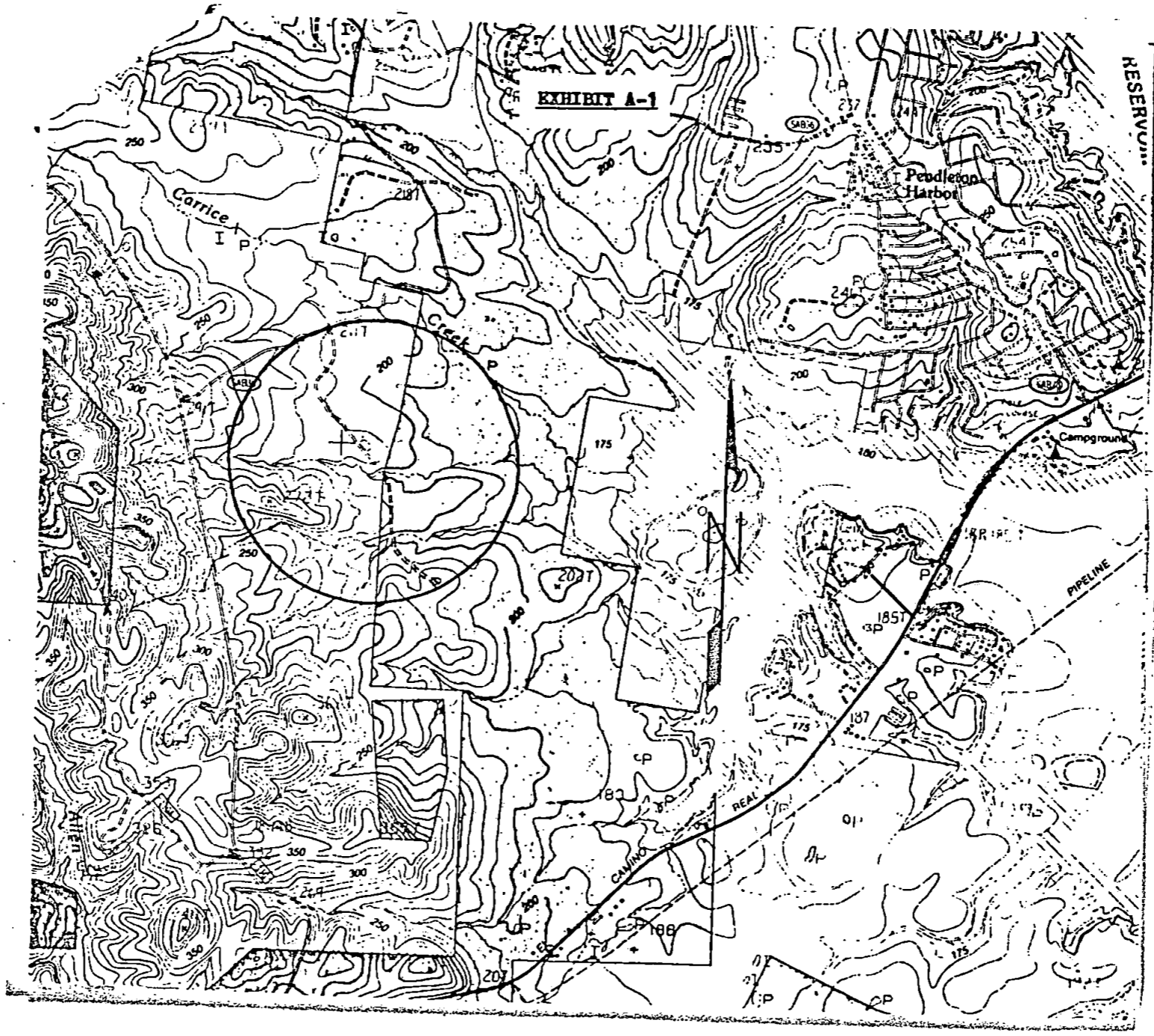
COMMISSIONER, PRECINCT NO. 3

COMMISSIONER, PRECINCT NO. 4

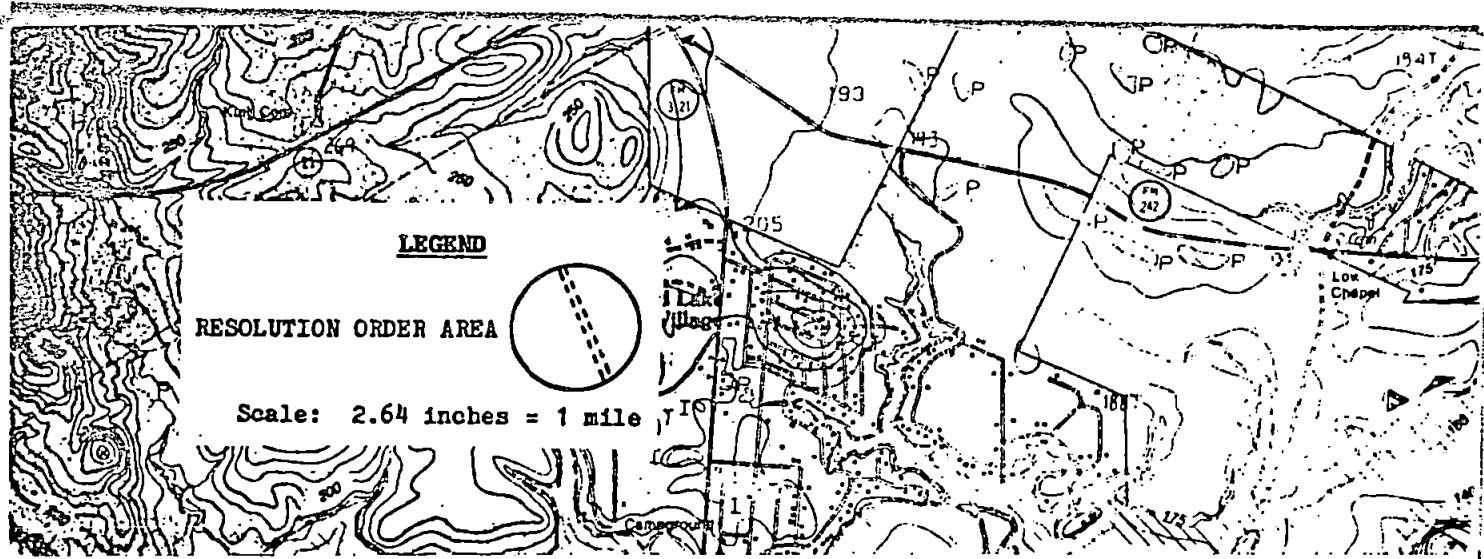
ATTEST:

COUNTY CLERK

DATE



808



609

SABINE COUNTY COMMISSIONER'S COURT
HEMPHILL, TEXAS

AMENDMENT TO RESOLUTION ORDER
DATED APRIL 14, 1975
RECORDED MAY 1, 1975
COMMISSIONER COURT RECORDS
VOLUME P, PAGE 510

ESTABLISHING CERTAIN ROADS IN
SABINE COUNTY, TEXAS

LET IT BE KNOWN BY ALL that the Commissioner's Court of Sabine County, Texas, during a regular court meeting, has declared that the pre-existing road described below and known as the Little Boy Neal Road is a public road.

General description for the Little Boy Neal Road is as follows:

AN EASEMENT FOR AN EXISTING ROAD, as now constructed on, over and across the James McKim Survey, A-39, dated February 26, 1835, Sabine County, Texas;

BEGINNING at a point 9817 feet ± generally west of Corner 36, F.S. Tract S-2K-IV, point being in the center of Forest Service road 117;

THENCE, in a southerly direction, 1875 feet ± to a point of intersection with the property boundary, which is a point 11 feet ± S76°E of Corner 61, F.S. Tract S-2K-IV;

Said road is further described and depicted on the attached map and marked as Exhibit A-1.

Raymond E. Smith
COUNTY JUDGE

11/23/87
DATE

B. E. Smith
COMMISSIONER, PRECINCT NO. 1

Billy M. H. H. H.
COMMISSIONER, PRECINCT NO. 2

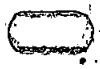
E. Ellison
COMMISSIONER, PRECINCT NO. 3

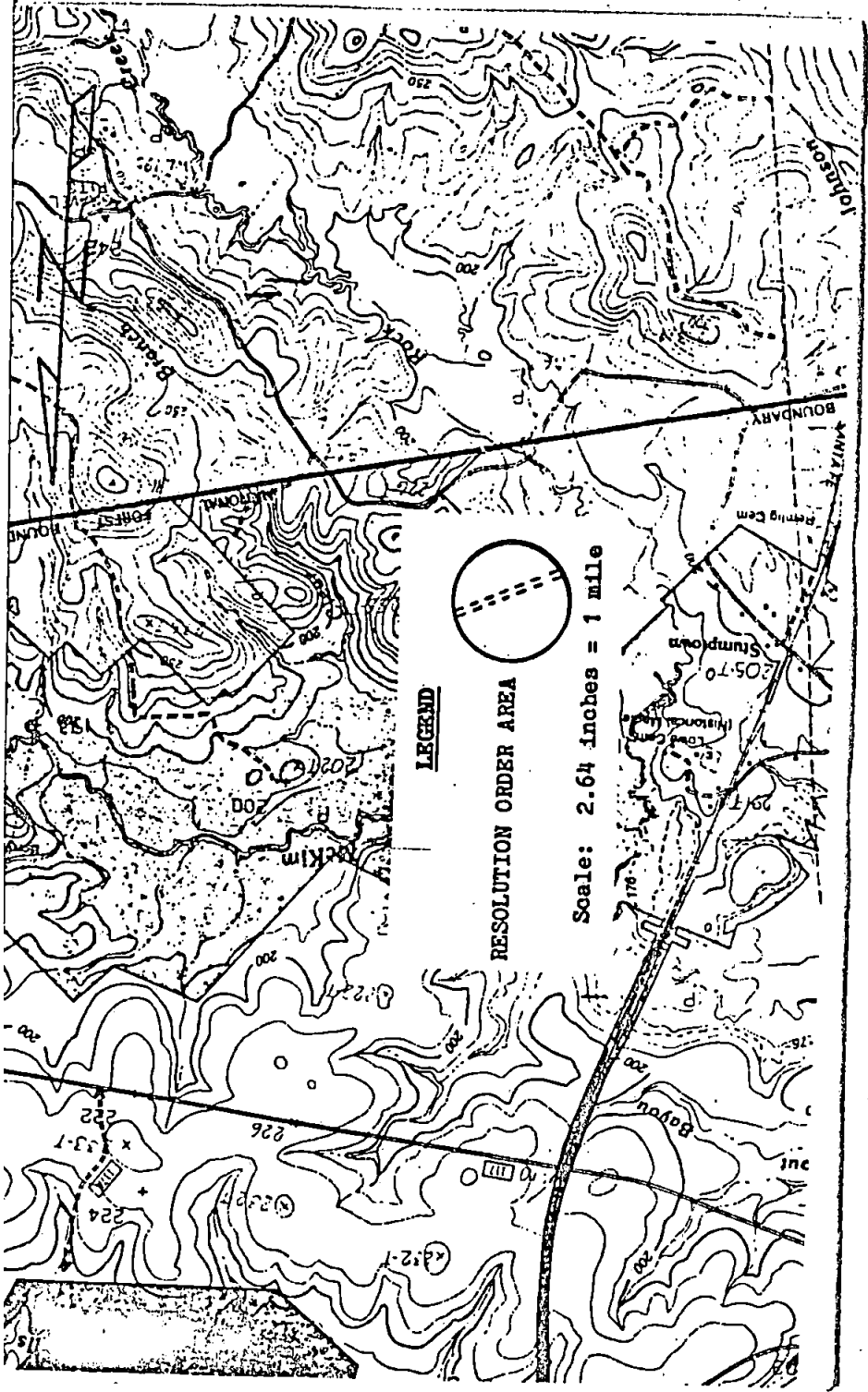
Christie D. Collier
COMMISSIONER, PRECINCT NO. 4

ATTEST:

Radice Gray
COUNTY CLERK

11/23/87
DATE





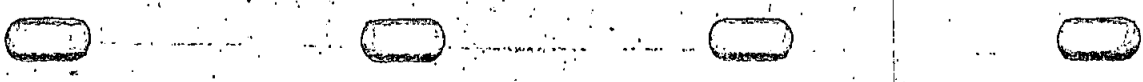
LEGEND

RESOLUTION ORDER AREA

Scale: 2.64 inches = 1 mile

I, NADINE GARY, County Clerk of Sabine County, Texas do hereby certify
that the foregoing instrument was filed _____ 1987 at
_____ O'Clock _____ M. and duly recorded Dec 3
1987 at 9:00 O'Clock A. M.

NADINE GARY CLERK Janice McDaniel DEPUTY



FLEXIBLE BENEFIT PLAN



SECURED FUTURE, INC.

THE PARR AGENCY
2051 S. WHEELER, SUITE B
P. O. BOX 685
JASPER, TEXAS 75951

7.15

WITHOUT FLEXIBLE BENEFIT PLAN

Total Taxable Monthly Income

\$ 2,000.00

Deductions:	
Social Security (FICA)	
Federal Withholding	
State Withholding	\$ 21.07

Payroll Insurance Deductions:

Dependent Health Insurance Premiums
Cancer Insurance Premiums

\$ 100.00
\$ 19.50

Total Take Home Pay

\$1,544.08

Each year you are having deducted from your paycheck medical insurance premiums for you and your family. You are also paying other health expenses out of your pocket. You are getting little or no benefit from these expenses by claiming them on your income tax. The reason for this is that your medical costs must exceed 7.5% of your family's adjusted gross income before you can claim any deductions. It is estimated that less than 2% ever get any benefit from itemizing their medical expenses. This limitation does not apply to Flexible Benefit Plans. **By participating in a Flexible Benefit Plan, you can deduct every dollar of medical deductions that you can verify.**

Monthly Expenses:	
Prescriptions, Eye Glasses, Doctor and Dental Bills, etc.	\$ 50.00
Disability Insurance Premiums	\$ 25.00

Walnut Street Securities

General
America

THE



AGENCY

RAYMOND PARR
Member N.A.S.D.A.
Insurance and Financial Plans

2051 S. WHEELER, SUIT
P.O. BOX
JASPER, TX 75
(409) 384-5

WITH FLEXIBLE BENE

Total Monthly Compensation **\$ 2,000.00**

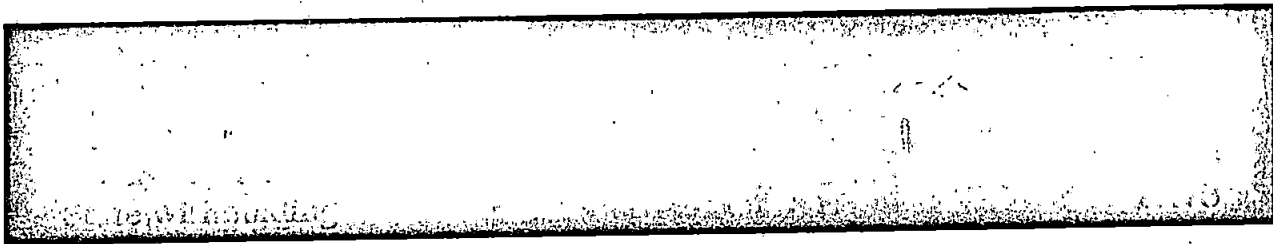
Payroll Insurance Deductions:

Dependent Health Insurance Premiums	\$ 100.00
Cancer Insurance Premiums	\$ 19.50

Monthly Expenses:

Prescriptions, Eye Glasses, Doctor and Dental Bills, etc.	\$ 50.00
Disability Insurance Premiums	\$ 25.00

Total Taxable Monthly Income **\$ 1,805.50**



Supplemental Retirement Plan **\$ 46.97**

Net Pay **\$ 1,469.08**

Monthly Expense Advance:

Prescriptions, Eye Glasses, Doctor and Dental Bills, etc	\$ 50.00
Disability Insurance Premiums	\$ 25.00

Total Take Home Pay **\$1,544.08**

FLEXIBLE BENEFIT PLAN ALLOWABLE EXPENSES

INSURANCE COVERAGE

- * Health Insurance
- * Major Medical Insurance
- * Group Term Life Insurance (Maximum \$50,000)
- * Disability Income Insurance
- * Cancer Insurance
- * Intensive Care Insurance
- * Vision Care Insurance
- * Accident Insurance
- * Dental Insurance

FEES/SERVICES

- * Anesthesiologist Fees
- * Dermatologist Fees
- * Gynecological Fees
- * Hospital Services
- * Obstetrical Fees
- * Physician Fees
- * Nursing Services
- * Surgical or Diagnostic Services
- * Chiropractor's or Osteopathic Services

PRESCRIPTION DRUGS

- * Birth Control Pills
- * Insulin

THERAPY TREATMENTS

- * Acupuncture
- * Cosmetic Surgery
- * Electrolysis
- * Legal Sterilization
- * Treatment for Addiction
- * Physical Therapy
- * Radium & Chemotherapy
- * Vaccinations
- * Speech Therapy

ASSISTANCE FOR THE HANDICAPPED

- * Cost of Guide for Blind Person
- * Cost of Note Taker for Deaf
- * Special Assistance Devices

DENTAL & ORTHODONTIC CARE

VISION CARE

- * Examination Fees
- * Eyeglasses & Contacts
- * Doctor's Fees

DEPENDENT CARE

- * Cost of Child Care While Parents Work
- * Cost of Care for Incapacitated Dependent

MEDICAL EQUIPMENT

- * Artificial Limbs
- * Crutches
- * Wheelchair or Auto-ette
- * Special Mattresses Medically Prescribed
- * Orthopedic Shoes (Cost over Ordinary Shoes)
- * Oxygen and Oxygen Equipment
- * Home Improvements Required Due to Medical Condition

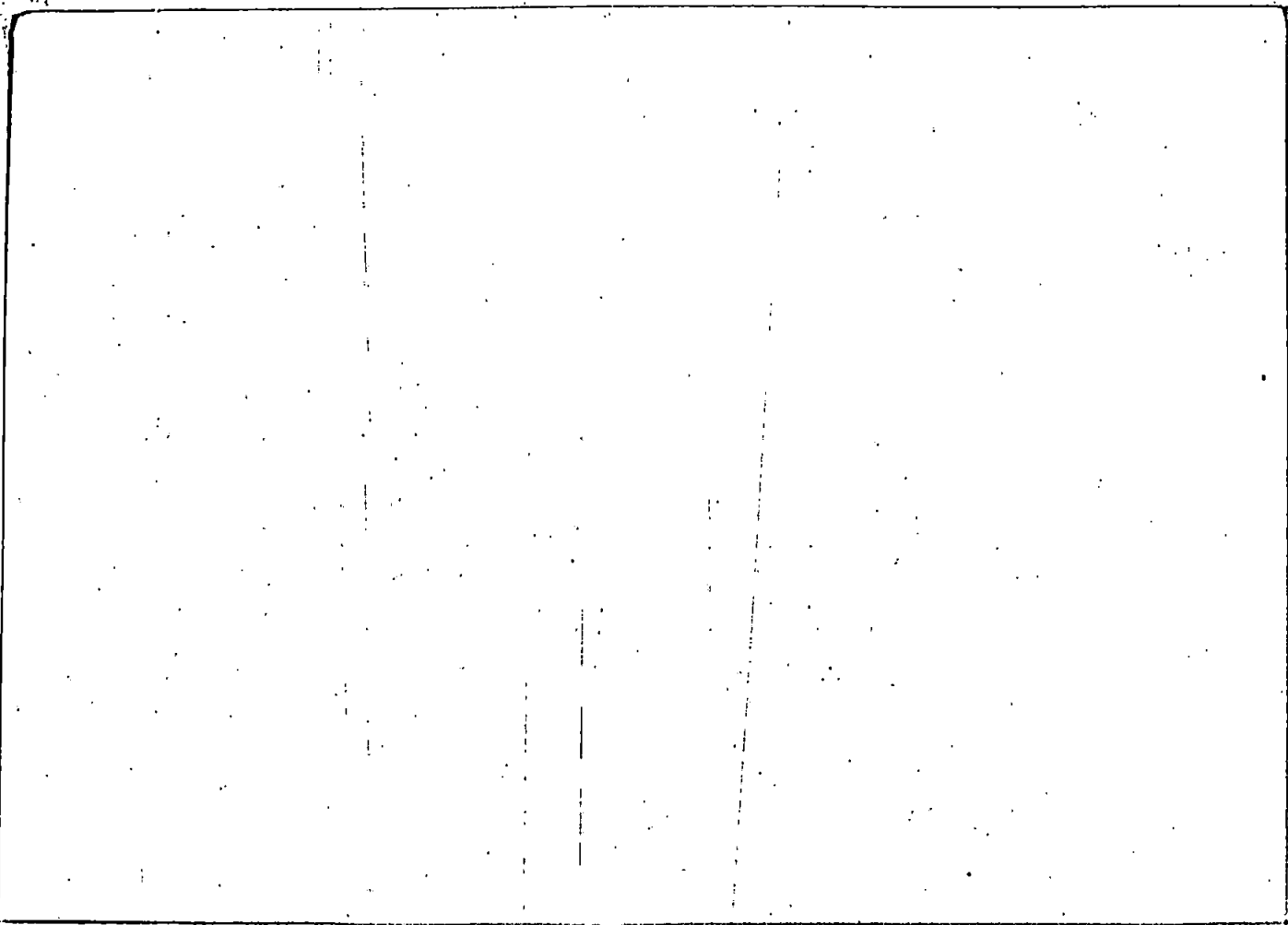
PSYCHIATRIC CARE

- * Psychiatric & Psychological Fees
- * Legal Fees Related to Mental Health

MISCELLANEOUS CHARGES

- * X-Rays
- * Donation of Organ Expenses
- * Medically Necessary Special Diets (Cost Exceeding Normal Diet)
- * Expenses of Medical, Surgical or Hospital Facility in which Premiums have been Charged
- * Voluntary Payment of Medicare Physicals: Routine or Preventive

HEARING EXPENSES



I, NADINE GARY, County Clerk of Sabine County, Texas do hereby certify
 that the foregoing instrument was filed _____ 1987 at
 _____ O'Clock _____ M. and duly recorded Dec. 10
 1987 at 9:00 O'Clock A. M.

NADINE GARY CLERK Janice McDaniel DEPUTY

