

Monday, February 26, 1990, the Honorable Commissioners' Court met in a regular session at 8:30 A. M., with the following members present:

Royce C. Smith	County Jüdge
C. Carlin McDaniel	Commissioner, Prct. # 1
Billy J. McGee	Commissioner, Prct. # 2
James H. Conn	Commissioner, Prct. # 3
Chester Cox, Sr.	Commissioner, Prct. # 4
Nadine Gary	Clerk of the Court

Meeting was called to order by Judge Royce Smith, with Brother Clarence<sup>Howell</sup> leading the opening prayer.

Minutes of the last meeting were read by County Clerk, Nadine Gary. Motion was made by Commissioner Carlin McDaniel to approve minutes. Commissioner Jimmy Conn seconded, and motion carried. Monthly bills were inspected and made ready for payment. Commissioner Billy McGee made the motion which was seconded by commissioner Jimmy Conn, to approve payment of accounts and salaries. Motion carried.

Sharon Farringer, a resident of Possum Hollow Road near Fin and Feather Lodge in Precinct 2, met with the court, requesting a speed limit of 5 miles per hour approximately 3/4 of a mile before you reach the Farringer home. Mrs. Farringer stated this is a very narrow road with dangerous "S" curves, and with people driving at the speed they do, the road is dangerous. At her request, Commissioner McGee made the motion to start proceedings to change the speed limit to 5 miles per hour on this section of road. Commissioner Cox seconded, and motion carried.

Commissioner Cox made the motion which was seconded by Commissioner Conn, to advertise for bids to sell several pieces of used equipment belonging to the County. Motion carried. Bid opening will be March 12th, at 9:00 A. M.

Sheriff Greer was present and asked to advertise for bids to buy a new patrol car for the Sheriff's Department. Commissioner Carlin McDaniel made the motion, which was seconded by Commissioner Jimmy Conn, to advertise for bids. Bids will be opened at our next meeting March 12, at 9:00 A. M. Motion carried.

Sheriff Greer also asked for a place to use as a pond pen. Commissioner Billy McGee said he had a pen that could be temporarily set up at the county Barn. This would be acceptable, because they have water there. Commissioner Cox made the motion to approve this solution. Commissioner Conn seconded the motion, and motion carried.

Removal of books from Law Library was on the agenda, but no action was taken at this time. It will be an agenda item March 12th.

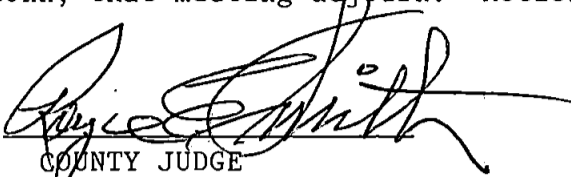
Although Jim Burton was on the agenda, he was not present.

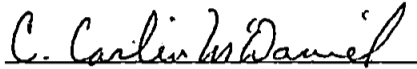
Mr. Collins was present with questions about Sanitary Land Fills in Sabine county. Judge Smith answered that he and Commissioner McDaniel would attend a meeting April 2, in Washington with E.P.A.

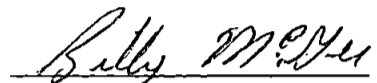
Tom Philips with the Sheriff department met with the court requesting that they approve a resolution authorizing the submission of a grant request to the Governor's office, Criminal Justice Division for the funding of the Deep East Texas Regional Narcotics Trafficking

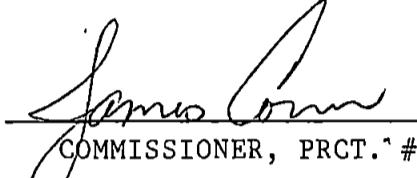
Task Forse. Commissioner Carlin McDaniel made the motion that the Court authorize Judge Royce Smith to sign any and all papers to this effect. Commissioner Jimmy Conn seconded, and motion carried. "See attached exhibit."

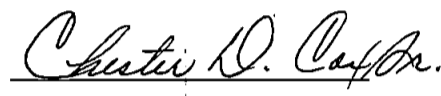
Commissioner Billy McGee made the motion, which was seconded by Commissioner Jimmy Conn, that meeting adjourn. Motion carried.

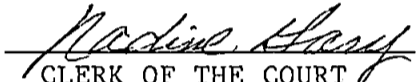
  
COUNTY JUDGE

  
COMMISSIONER, PRCT. # 1

  
COMMISSIONER, PRCT. # 2

  
COMMISSIONER, PRCT. # 3

  
COMMISSIONER, PRCT. # 4

  
CLERK OF THE COURT



RESOLUTION

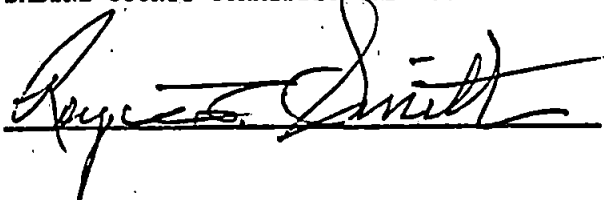
A RESOLUTION BY THE COMMISSIONERS COURT OF SABINE COUNTY, AUTHORIZING THE SUBMISSION OF A GRANT REQUEST TO THE GOVERNOR'S OFFICE, CRIMINAL JUSTICE DIVISION: FOR THE FUNDING OF THE DEEP EAST TEXAS REGIONAL NARCOTICS TRAFFICKING TASK FORCE.

WHEREAS, the Sabine County Sheriff's Department is attempting to upgrade its service along with other participating agencies which are a party to the Cooperative Working Agreement in connection with the said grant request by use of funds now available through the Texas Criminal Justice Division by obtaining a grant for the Deep East Texas Regional Narcotics Trafficking Task Force. The County is in favor of such improvement, and such grant, to better serve the citizens of our County as well as the citizens which are a party to the Cooperative Working Agreement.

BE IT THEREFORE RESOLVED. that the Commissioners Court of Sabine County authorizes the County Judge of Sabine County to sign this resolution favoring this grant and to place the same upon the minutes of the Commissioners' Court of Sabine County.


PASSED AND APPROVED THIS THE 26 DAY OF Feb, 1990

SABINE COUNTY COMMISSIONERS' COURT



Robert Smith

ATTEST:



Radial Gray



THE STATE OF TEXAS

**County of Sabine**

P.O. BOX 716  
HEMPHILL, TEXAS 75948  
February 26th, 1990

Notice is hereby given that the Sabine County Commissioners Court has recommended a Speed Limit of 15 m.p.h. for the Shamrock Shores Subdivision.

The Commissioners Court recieved a request for a 5 m.p.h. speed limit sign to be placed on the Gooch Road approximately 3 quarters of a mile before you reach the Farringers Home. This will be an Agenda item for March 12, 1990.

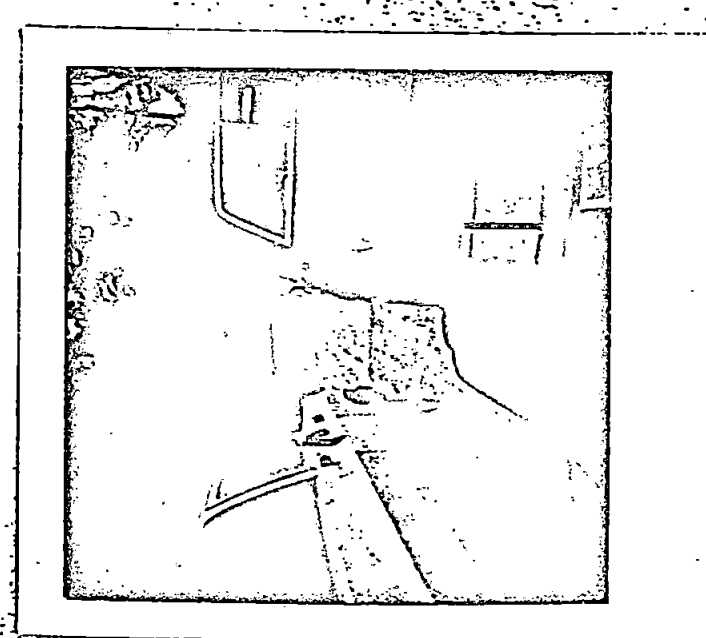
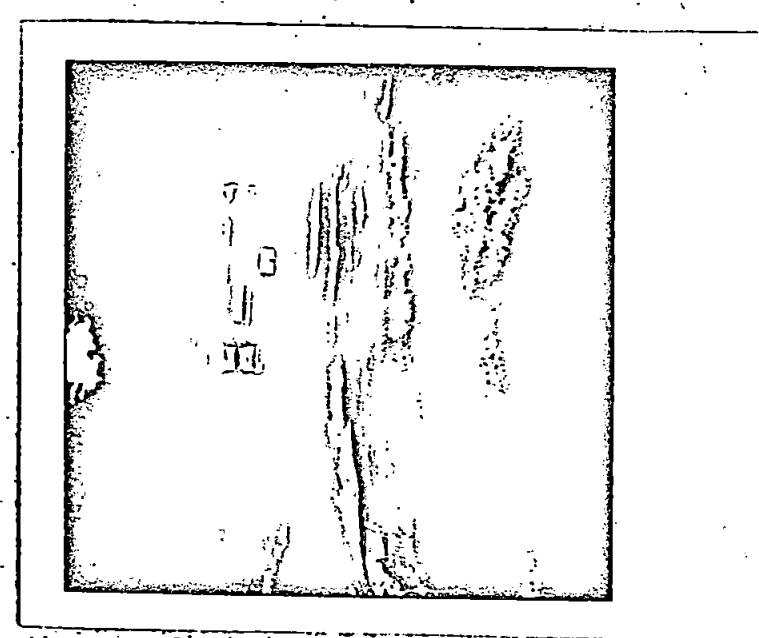
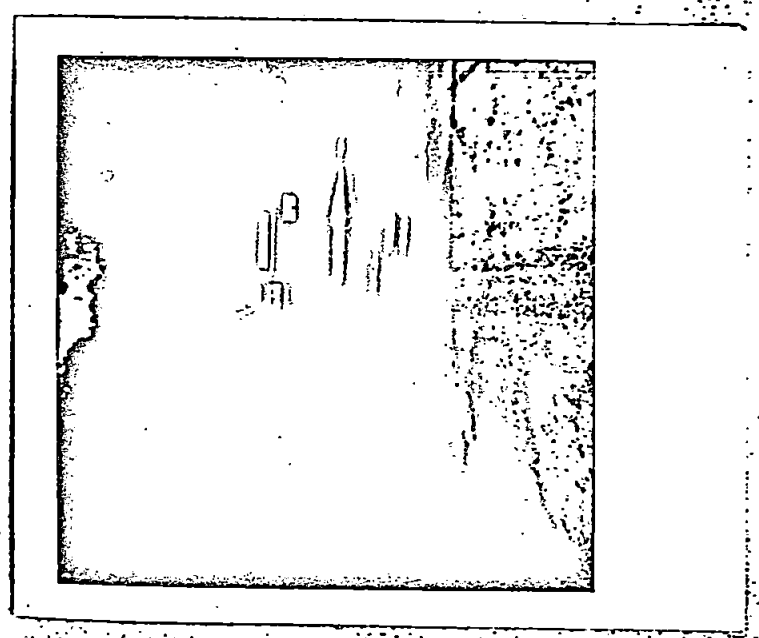
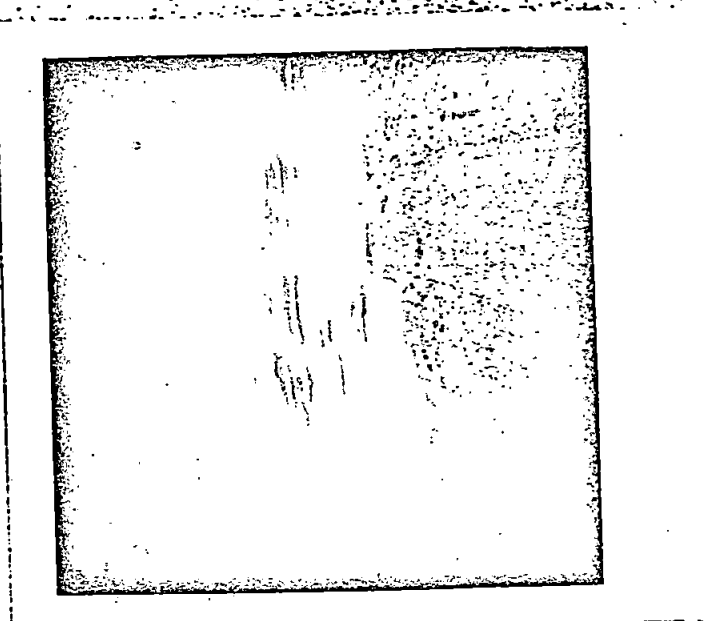
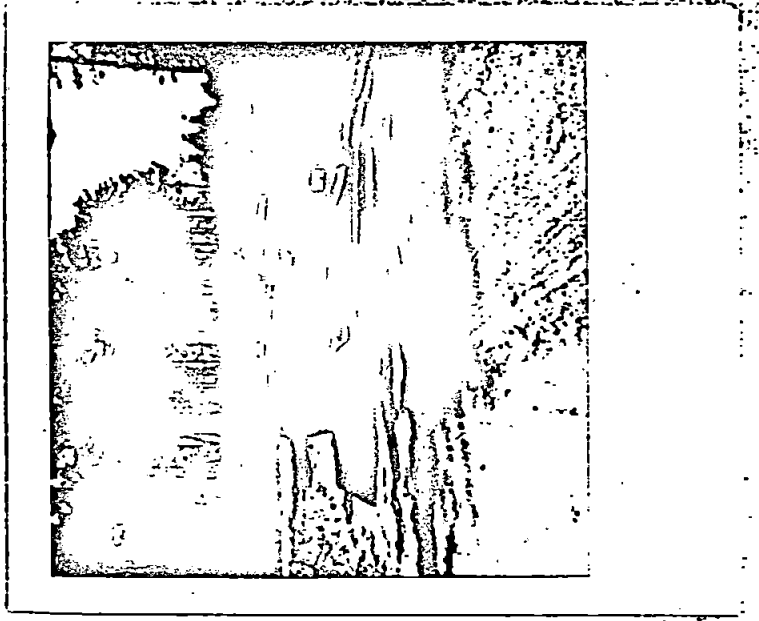
FILED FOR RECORD  
AT 11:25 O'CLOCK A.M.

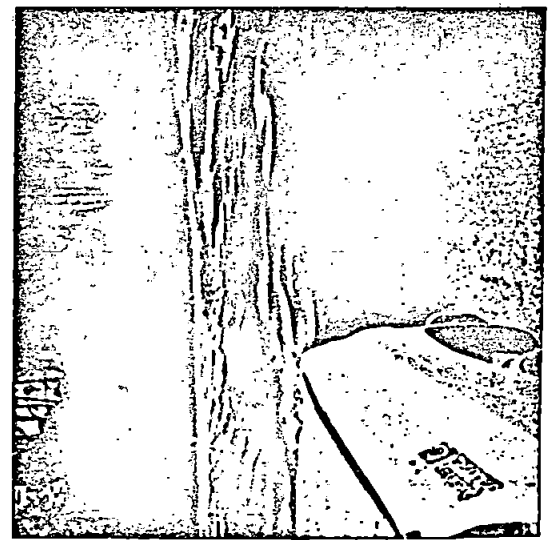
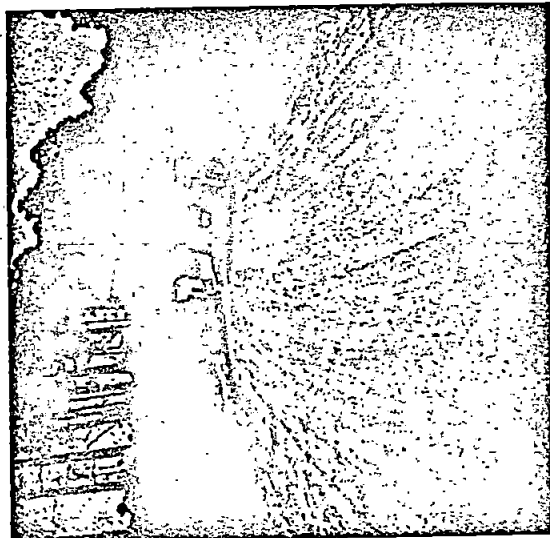
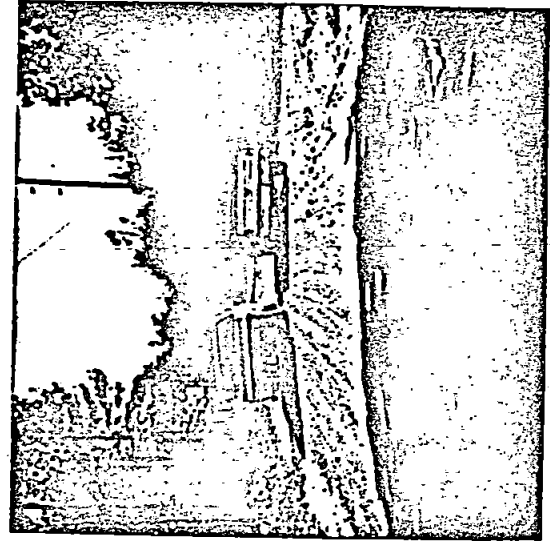
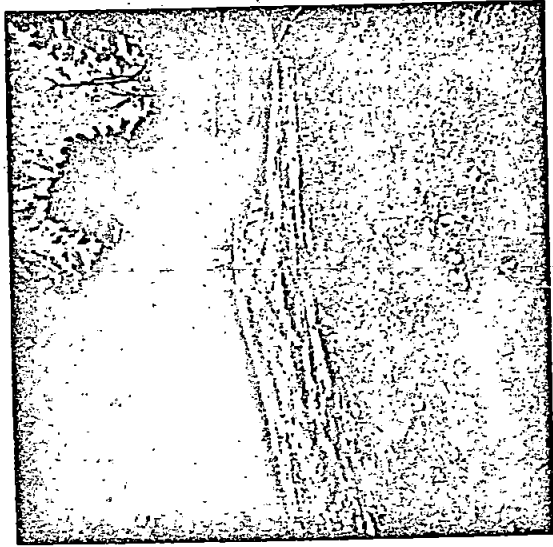
FEB 26 1990

*Nadine Gary*  
Clerk County Court, Sabine County

BY *[Signature]* DEPUTY

*Chambers*





Sabine County, Texas  
 Summary of claims to be approved February 26 , 1990

Date Received	Vendor Name	Brief Description	Check#	Account	Amount
2/13/90	First State Bank	Social Security and Withholding for wages paid 2/12/90	45306	Road & Bridge #1	\$ 152.27
2/26/90	Keith Clark	Salary 10 days @ 51.10; Insurance benefit 121.00	45469	Road & Bridge #1	466.40
2/26/90	Jerry Miller	Salary 10 days @ 51.10; Insurance benefit 121.00	45470	Road & Bridge #1	504.40
2/26/90	Robert Cunningham, Jr.	Salary 10 days @ 51.10; Insurance benefit 121.00	45471	Road & Bridge #1	465.40

Grand Total

Approved: [Signature]  
 County Judge  
C. Caslin McDaniel  
 Comm. Pct. 1

[Signature]  
 Comm. Pct. 2

Attest: [Signature] - 3/1/90  
 County Clerk Date

[Signature]  
 Comm. Pct. 3

[Signature]  
 Comm. Pct. 4

Fund Totals

XXXXXXXXXX  
 R & B#1  
 XXXXXXXXXXXXXXXXXXXX  
 Total \$1,588.47

Sabine County, Texas  
 Summary of claims to be approved February 26, 1990

Date Received	Vendor Name	Brief Description	Check#	Account	Amount
2/13/90	First State Bank	Social Security and Withholding for wages paid 2/12/90	45307	Road & Bridge #2	\$ 56.82
2/14/90	State Department of Hwys.	1970 Miller Trailer, Serial No. 11608	45331	Road & Bridge #2	1,200.00
		Eq. No. 11-9984-F	45476	Road & Bridge #2	15.50
2/12/90	G-M Water Supply Corp.	Account #1262 - Water bill			
2/12/90	Welsh Rock	Crushed Rock - Ticket #3764 and #3253	45477	Road & Bridge #2	152.00
		19 yrs. @ 8.00			
2/22/90	Richards' Repair Service	Invoice #1118, #1119 and #1120 - Service calls and labor	45478	Road & Bridge #2	280.00
		Change tire	45479	Road & Bridge #2	12.50
2/23/90	Procella Service Station	Salary - 5 days; Insurance benefit 121.00	45465	Road & Bridge #2	321.17
2/26/90	Herbert R. Wood	Salary - Part Time	45466	Road & Bridge #2	251.55
2/26/90	Thomas Ladner	Salary - Part Time	45467	Road & Bridge #2	251.55
2/26/90	Arthur Williams	Salary - Part Time	45468	Road & Bridge #2	352.17
2/26/90	C. E. Gray	Salary - Part Time	45472	Road & Bridge #2	217.87
2/26/90	Herbert R. Wood	Salary	45473	Road & Bridge #2	251.55
2/26/90	Thomas Ladner	Salary - Part Time	45474	Road & Bridge #2	251.55
2/26/90	Arthur Williams	Salary - Part Time	45475	Road & Bridge #2	251.55
2/26/90	C. E. Gray	Salary - Part Time			
Grand Total					

Approved:

[Signature]  
 County Judge  
C. Calvin McDaniel  
 Comm. Pct. 1

Attest:

[Signature]  
 Comm. Pct. 2

[Signature] - 3/1/90  
 County Clerk Date  
[Signature]  
 Comm. Pct. 3

[Signature]  
 Comm. Pct. 4

Fund Totals

XXXXXXXXXX  
 R & B #2  
 XXXXXXXXXXXXXXXXXXXX  
 Total \$3,865.78



Sabine County, Texas  
 Summary of claims to be approved February 26, 1990

Date Received	Vendor Name	Brief Description	Check#	Account	Amount
2/13/90	First State Bank	Social Security and Withholding for wages paid 2/12/90	45308	Road & Bridge #3	\$ 125.27
2/14/90	State Department of Hwys	1970 Miller Trailer, Serial No. 11610	45332	Road & Bridge #3	1,200.00
2/22/90	Bronson Automotive & Hdw.	Eq. No. 11-9983 Invoice #003542, #003501, #003861 and #003242	45480	Road & Bridge #3	52.88
2/26/90	McBride Auto Salvage	Supplies	45481	Road & Bridge #3	532.85
2/26/90	Johnny Franklin	Parts and Labor	45458	Road & Bridge #3	479.40
2/26/90	Dan Hammock	Salary 10 days @ 51.10; Insurance benefit 121.00	45459	Road & Bridge #3	491.40
2/26/90	Lonnie B. Harley	Salary 10 days @ 51.10; Insurance benefit 121.00	45460	Road & Bridge #3	479.40

Grand Total

Approved: [Signature]  
 County Judge  
C. Carlin McDaniel  
 Comm. Pct. 1

Attest: [Signature] - 3/1/90  
 County Clerk Date

[Signature]  
 Comm. Pct. 2

[Signature]  
 Comm. Pct. 3

[Signature]  
 Comm. Pct. 4

Fund Totals  
~~XXXXXXXXXX~~  
 R & B #3  
~~XXXXXXXXXXXXXXXXXXXX~~  
 Total \$3,361.20

Sabine County, Texas  
 Summary of claims to be approved February 26, 1990

Date Received	Vendor Name	Brief Description	Check#	Account	Amount
2/13/90	First State Bank	Social Security and Withholding for wages paid 2/12/90	45309	Road & Bridge #4	\$ 515.03
2/22/90	Proclla Service Station	Flat and boot	45488	Road & Bridge #4	25.00
2/22/90	Chester D. Cox, Sr.	Reimbursement for telephone calls 3.54 and keys 5.94	45489	Road & Bridge #4	9.48
2/26/90	James Edwards	Salary 10 days @ 51.04; Ins. benefit 121.00	45461	Road & Bridge #4	529.95
2/26/90	Troy Burch	Salary 10 days @ 51.04 and 16 hrs. @ 9.57 Overtime; Insurance benefit 121.00	45462	Road & Bridge #4	610.55
2/26/90	T. W. Thomas	Salary - Dump Maint. - Part Time	45463	Road & Bridge #4	303.90
2/26/90	Johnny Franklin	Salary - 8 hrs. @ 9.57	45464	Road & Bridge #4	57.30

Grand Total

proved: [Signature]  
 County Judge  
C. Carlin Daniel  
 Comm. Pct. 1

[Signature]  
 Comm. Pct. 2

Attest: [Signature] - 2/1/90  
 County Clerk Date  
[Signature]  
 Comm. Pct. 3

[Signature]  
 Comm. Pct. 4

Fund Totals  
~~XXXXXXXXXX~~  
 R & B #4  
~~XXXXXXXXXX~~  
 Total \$2,051.21

Sabine County, Texas  
 Summary of claims to be approved February 26, 1990

Date Received	Vendor Name	Brief Description	Check#	Account	Amount
2/21/90	Charlotte A. Lane	Jury duty - 1 day - District Court	1940	Jury	\$ 5.00
2/21/90	Mary C. Blair	Jury duty - 1 day - District Court	1941	Jury	5.00
2/21/90	William H. Griffin	Jury duty - 1 day - District Court	1942	Jury	5.00
2/21/90	Martha A. Vickers	Jury duty - 1 day - District Court	1943	Jury	5.00
2/21/90	Rebecca S. Hooker	Jury duty - 1 day - District Court	1944	Jury	5.00
2/21/90	Mike E. Jerge	Jury duty - 1 day - District Court	1945	Jury	5.00
2/21/90	Robert E. Cunningham	Jury duty - 1 day - District Court	1946	Jury	5.00
2/21/90	Julia C. Sparks	Jury duty - 1 day - District Court	1947	Jury	5.00
2/21/90	Nancy M. Fuller	Jury duty - 1 day - District Court	1948	Jury	5.00
2/21/90	Janet H. Henson	Jury duty - 1 day - District Court	1949	Jury	5.00
2/21/90	Trina J. King	Jury duty - 1 day - District Court	1950	Jury	5.00
2/21/90	Sharon L. Baker	Jury duty - 1 day - District Court	1951	Jury	5.00
2/21/90	Tommy G. Harley	Jury duty - 1 day - District Court	1952	Jury	5.00
2/21/90	Wayne W. Mitchell	Jury duty - 1 day - District Court	1953	Jury	5.00
2/21/90	Martha N. Griffin	Jury duty - 1 day - District Court	1954	Jury	5.00
2/21/90	Cecil J. Barlow	Jury duty - 1 day - District Court	1955	Jury	5.00
2/21/90	Tina K. Ferguson	Jury duty - 1 day - District Court	1956	Jury	5.00
2/21/90	Raymond R. Mattox	Jury duty - 1 day - District Court	1957	Jury	5.00
2/21/90	Rhonda H. Beamesderfer	Jury duty - 1 day - District Court	1958	Jury	5.00
2/21/90	Ray A. Sepulvado	Jury duty - 1 day - District Court	1959	Jury	5.00
2/21/90	Christine M. Burtrand	Jury duty - 1 day - District Court	1960	Jury	5.00
2/21/90	Frances S. Ferguson	Jury duty - 1 day - District Court	1961	Jury	5.00
2/21/90	Priscilla D. Powell	Jury duty - 1 day - District Court	1962	Jury	5.00
2/21/90	Johnnie R. Williams	Jury duty - 1 day - District Court	1963	Jury	5.00
2/21/90	Daniel B. Chance	Jury duty - 1 day - District Court	1964	Jury	5.00

Grand Total

Approved:

*[Signature]*  
 County Judge

Attest:

*[Signature]* 3/1/90  
 County Clerk Date

*[Signature]*  
 Comm. Pct. 1

*[Signature]*  
 Comm. Pct. 2

*[Signature]*  
 Comm. Pct. 3

*[Signature]*  
 Comm. Pct. 4

Fund Totals


Jury  
 XXXXXXXXX  
 XXXXXXXXX  
 XXXXXXXXX

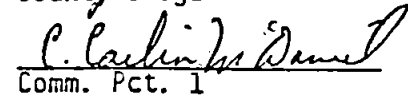
Total

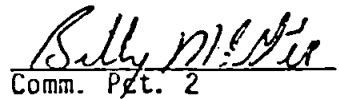
Sabine County, Texas  
 Summary of claims to be approved February 26, 1990

Date Received	Vendor Name	Brief Description	Check#	Account	Amount
2/21/90	Dorothy A. Strickland	Jury duty - 1 day - District Court	1965	Jury	\$ 5.00
2/21/90	Claude M. Williams	Jury duty - 1 day - District Court	1966	Jury	5.00
2/21/90	John L. Conn	Jury duty - 1 day - District Court	1967	Jury	5.00
2/21/90	Mike P. Hammock	Jury duty - 1 day - District Court	1968	Jury	5.00
2/21/90	Robert T. Rolfe	Jury duty - 1 day - District Court	1969	Jury	5.00
2/21/90	Sherri A. Eddings	Jury duty - 1 day - District Court	1970	Jury	5.00
2/21/90	Kathleen T. Neff	Jury duty - 1 day - District Court	1971	Jury	5.00
2/21/90	Martha J. Snyder	Jury duty - 1 day - District Court	1972	Jury	5.00
2/21/90	John Anthony	Jury duty - 1 day - District Court	1973	Jury	5.00
2/21/90	Donna R. Nichols	Jury duty - 1 day - District Court	1974	Jury	5.00
2/21/90	Charles F. Coday	Jury duty - 1 day - District Court	1975	Jury	5.00
2/21/90	Kenneth L. Webb	Jury duty - 1 day - District Court	1976	Jury	5.00
2/21/90	Dorothy B. Toole	Jury duty - 1 day - District Court	1977	Jury	5.00
2/21/90	Vickie L. Pate	Jury duty - 1 day - District Court	1978	Jury	5.00
2/21/90	Jack M. Hooper	Jury duty - 1 day - District Court	1979	Jury	5.00
2/21/90	Monica L. Edwards	Jury duty - 1 day - District Court	1980	Jury	5.00
2/21/90	Paul W. Harvey	Jury duty - 1 day - District Court	1981	Jury	5.00
2/21/90	James F. Taylor	Jury duty - 1 day - District Court	1982	Jury	5.00
2/21/90	Betty J. Boyd	Jury duty - 1 day - District Court	1983	Jury	5.00
2/21/90	Mary K. Russell	Jury duty - 1 day - District Court	1984	Jury	5.00
2/21/90	James C. Bragg	Jury duty - 1 day - District Court	1985	Jury	5.00
2/21/90	Federick M. Davis	Jury duty - 1 day - District Court	1986	Jury	5.00
2/21/90	Mary B. Flowers	Jury duty - 1 day - District Court	1987	Jury	5.00
2/21/90	Alice A. MaGee	Jury duty - 1 day - District Court	1988	Jury	5.00
2/21/90	Cynthia G. Bailey	Jury duty - 1 day - District Court	1989	Jury	5.00

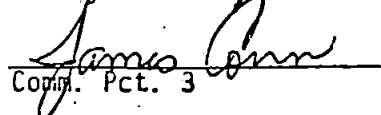
Grand Total

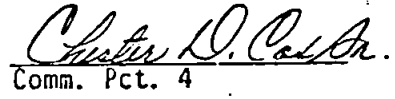
Approved:   
 County Judge

  
 Comm. Pct. 1

  
 Comm. Pct. 2

Attest:  Date 3/1/90  
 County Clerk

  
 Comm. Pct. 3

  
 Comm. Pct. 4

Fund Totals  
 Jury  
~~XXXXXXXXXX~~  
~~XXXXXXXXXX~~  
~~XXXXXXXXXX~~  
 Total =

Sabine County, Texas  
 Summary of claims to be approved February 26, 1990

Date Received	Vendor Name	Brief Description	Check#	Account	Amount
2/21/90	Steven E. Tomol	Jury duty - 1 day - District Court	1990	Jury	\$ 5.00
2/21/90	Robert E. Jenkins	Jury duty - 1 day - District Court	1991	Jury	5.00
2/21/90	Barbara S. Kirk	Jury duty - 1 day - District Court	1992	Jury	5.00
2/21/90	Randy D. Bailey	Jury duty - 1 day - District Court	1993	Jury	5.00
2/21/90	Don D. Lane	Jury duty - 1 day - District Court	1994	Jury	5.00
2/21/90	Gene W. Doss	Jury duty - 1 day - District Court	1995	Jury	5.00
2/21/90	Jerry W. Singleton	Jury duty - 1 day - District Court	1996	Jury	5.00
2/21/90	Robert M. Britner	Jury duty - 1 day - District Court	1997	Jury	5.00
2/21/90	Etola S. Franks	Jury duty - 1 day - District Court	1998	Jury	5.00
2/21/90	Minnie H. Nichols	Jury duty - 1 day - District Court	1999	Jury	5.00
2/21/90	Ronald T. Meadows	Jury duty - 1 day - District Court	2000	Jury	5.00
2/21/90	Lee E. Hunt	Jury duty - 1 day - District Court	2001	Jury	5.00
2/21/90	Martha A. Mitchell	Jury duty - 1 day - District Court	2002	Jury	5.00
2/21/90	Malcom O. Gary	Jury duty - 1 day - District Court	2003	Jury	5.00
2/21/90	Donna L. MaGee	Jury duty - 1 day - District Court	2004	Jury	5.00
2/21/90	Nathaniel H. Willey	Jury duty - 1 day - District Court	2005	Jury	5.00
2/21/90	Trina C. Jerge	Jury duty - 1 day - District Court	2006	Jury	5.00
2/21/90	Jessie J. Huffman	Jury duty - 1 day - District Court	2007	Jury	5.00
2/21/90	Raymond E. Williams	Jury duty - 1 day - District Court	2008	Jury	5.00
2/21/90	Mildred M. White	Jury duty - 1 day - District Court	2009	Jury	5.00
2/21/90	Roy E. Freeman	Jury duty - 1 day - District Court	2010	Jury	5.00
2/21/90	Ronny W. Fuller	Jury duty - 1 day - District Court	2011	Jury	5.00
2/21/90	Joan L. Goodart	Jury duty - 1 day - District Court	2012	Jury	5.00
2/21/90	Florence s. Freeman	Jury duty - 1 day - District Court	2013	Jury	5.00
2/21/90	Don L. Edgings	Jury duty - 1 day - District Court	2014	Jury	5.00

Grand Total

proved:

*[Signature]*  
 County Judge

Attest:

*[Signature]* 3/1/90  
 County Clerk Date

*[Signature]*  
 Comm. Pct. 1

*[Signature]*  
 Comm. Pct. 2

*[Signature]*  
 Comm. Pct. 3

*[Signature]*  
 Comm. Pct. 4

Fund Totals  
 Jury  
~~XXXXXXXXXX~~  
~~XXXXXXXXXX~~  
~~XXXXXXXXXX~~  
 Total

Sabine County, Texas  
 Summary of claims to be approved February 26, 1990

Date Received	Vendor Name	Brief Description	Check#	Account	Amount
2/21/90	Vicki J. Jordan	Jury duty - 1 day - District Court	2015	Jury	\$ 5.00
2/21/90	Frances J. Hamilton	Jury duty - 1 day - District Court	2016	Jury	5.00
2/21/90	Dorothy A. Gentry	Jury duty - 1 day - District Court	2017	Jury	5.00
2/21/90	Wade K. McGraw	Jury duty - 1 day - District Court	2018	Jury	5.00
2/21/90	Stacy L. Stewart	Jury duty - 1 day - District Court	2019	Jury	5.00
2/21/90	William R. Fuller	Jury duty - 1 day - District Court	2020	Jury	5.00
2/21/90	Anita H. Hamilton	Jury duty - 1 day - District Court	2021	Jury	5.00
2/21/90	Van Williams	Jury duty - 1 day - District Court	2022	Jury	5.00
2/21/90	Nora T. Bickham	Jury duty - 1 day - District Court	2023	Jury	5.00
2/21/90	Robert L. Green	Jury duty - 1 day - District Court	2024	Jury	5.00
2/21/90	Robert L. Garrett	Jury duty - 1 day - District Court	2025	Jury	5.00
2/21/90	Tawana L. Clark	Jury duty - 1 day - District Court	2026	Jury	5.00
2/21/90	James H. White	Jury duty - 1 day - District Court	2027	Jury	5.00
2/21/90	David L. Parrish	Jury duty - 1 day - District Court	2028	Jury	5.00
2/21/90	Patricia M. Bradberry	Jury duty - 1 day - District Court	2029	Jury	5.00
2/21/90	Tammie D. Chance	Jury duty - 1 day - District Court	2030	Jury	5.00
2/21/90	Betty M. Allison	Jury duty - 1 day - District Court	2031	Jury	5.00
2/21/90	Yvonne Featherston	Jury duty - 1 day - District Court	2032	Jury	5.00
2/21/90	Quincy Wright	Jury duty - 1 day - District Court	2033	Jury	5.00
2/21/90	Linda S. Blake	Jury duty - 1 day - District Court	2034	Jury	5.00
2/21/90	Ford S. Berry	Jury duty - 1 day - District Court	2035	Jury	5.00
2/21/90	Lucy M. Whitaker	Jury duty - 1 day - District Court	2036	Jury	5.00
2/21/90	Denise R. Weatherspoon	Jury duty - 1 day - District Court	2037	Jury	5.00
2/21/90	Kathleen P. Wright	Jury duty - 1 day - District Court	2038	Jury	5.00
2/21/90	Betty J. Simmons	Jury duty - 1 day - District Court	2039	Jury	5.00

Grand Total

Approved: [Signature]  
 County Judge

Attest: [Signature] - 3/1/90  
 County Clerk Date

C. Carlin Daniel  
 Comm. Pct. 1

Billy McNeil  
 Comm. Pct. 2

James Ann  
 Comm. Pct. 3

Charles D. Cullen  
 Comm. Pct. 4

Fund Totals  
 Jury  
~~XXXXXXXX~~  
~~XXXXXXXX~~  
~~XXXXXXXXXXXXXXXXXXXX~~  
 Total

Sabine County, Texas  
 Summary of claims to be approved February 26, 1990

Date Received	Vendor Name	Brief Description	Check#	Account	Amount
2/21/90	Kenneth B. Scank	Jury duty - 1 day - District Court	2040	Jury	\$ 5.00
2/21/90	Barbara B. Jones	Jury duty - 1 day - District Court	2041	Jury	5.00
2/21/90	Gladys G. Johnson	Jury duty - 1 day - District Court	2042	Jury	5.00
2/21/90	Tammie L. Cox	Jury duty - 1 day - District Court	2043	Jury	5.00
2/21/90	Thelma L. Bobbitt	Jury duty - 1 day - District Court	2044	Jury	5.00
2/21/90	Kathy S. Melde	Jury duty - 1 day - District Court	2045	Jury	5.00
2/21/90	William A. Barcheers	Jury duty - 1 day - District Court	2046	Jury	5.00
2/21/90	Millard L. Broussard	Jury duty - 1 day - District Court	2047	Jury	5.00
2/21/90	Tommy Smith	Jury duty - 1 day - District Court	2048	Jury	5.00
2/21/90	Thomas B. Cobb	Jury duty - 1 day - District Court	2049	Jury	5.00
2/21/90	Sandra W. Creech	Jury duty - 1 day - District Court	2050	Jury	5.00
2/21/90	Ronnie L. Felts	Jury duty - 1 day - District Court	2051	Jury	5.00
2/21/90	Rexene M. Setters	Jury duty - 1 day - District Court	2052	Jury	5.00
2/23/90	R. Earl Lord	Attorney fee; The State of Texas vs. Bobby James Rogers; No. 5066	45490	Jury	125.00
2/23/90	Brenda H. Corley	Jury duty - 4 days - District Court	2053	Jury	20.00
2/23/90	Joe D. Bennett	Jury duty - 4 days - District Court	2054	Jury	20.00
2/23/90	Linda M. Wood	Jury duty - 4 days - District Court	2055	Jury	20.00
2/23/90	Alice T. Cloud	Jury duty - 4 days - District Court	2056	Jury	20.00
2/23/90	John B. Wolfe	Jury duty - 4 days - District Court	2057	Jury	20.00
2/23/90	Judy R. Button	Jury duty - 4 days - District Court	2058	Jury	20.00
2/23/90	Hiram M. Terry	Jury duty - 4 days - District Court	2059	Jury	20.00
2/23/90	Karen L. Bass	Jury duty - 4 days - District Court	2060	Jury	20.00
2/23/90	Kitty L. Coates	Jury duty - 4 days - District Court	2062	Jury	20.00
2/23/90	Welden E. Elliott	Jury duty - 4 days - District Court	2063	Jury	20.00

Grand Total

Approved: [Signature]  
 County Judge  
C. Carlin McDaniel  
 Comm. Pct. 1

[Signature]  
 Comm. Pct. 2

Attest: [Signature] - 3/1/90  
 County Clerk Date  
[Signature]  
 Comm. Pct. 3

[Signature]  
 Comm. Pct. 4

Fund Totals  
 Jury  
 XXXXXXXXX  
 XXXXXXXXX  
 XXXXXXXXX  
 Total

Sabine County, Texas  
 Summary of claims to be approved February 26, 1990

Date Received	Vendor Name	Brief Description	Check#	Account	Amount
2/23/90	Earmon W. Ener	Jury duty - 4 days - District Court	2064	Jury	\$ 20.00
2/23/90	Cedell Garrett	Jury duty - 4 days - District Court	2065	Jury	20.00
2/23/90	Charles E. Greer	Jury duty - 1 day - District Court	2066	Jury	5.00

Grand Total

proved:

*[Signature]*  
 County Judge

*C. Carlin McDaniel*  
 Comm. Pct. 1

*Billy McPherson*  
 Comm. Pct. 2

Attest:

*Nadine Gary - 3/1/90*  
 County Clerk Date

*James Brown*  
 Comm. Pct. 3

*Chester D. Calhoun*  
 Comm. Pct. 4

Fund Totals

Jury  
 XXXXXXXX  
 XXXXXXXX  
 XXXXXXXX  
 Total \$935.00



Sabine County, Texas  
 Summary of claims to be approved February 26, 1990

Date Received	Vendor Name	Brief Description	Check#	Account	Amount
2/12/90	Jerry B. Sanders	Repairs on Voting Precinct #5 Building	45286	General	\$ 469.62
2/13/90	Postmaster	Postage for meter	45305	General	1,000.00
2/19/90	Postmaster	#580 Box Rent	45386	General	17.00
2/19/90	Contel of Tex., Inc.	Co. Judge 192.70; Co. Clerk 40.16; Treasurer 28.02; Co. Atty. 103.98; J.P.#1 27.03; Vet. Co.Serv. 26.93; Tax Collector 60.90; Co. Agent 112.43; Dist. Clerk 53.65 and Sheriff 314.54			
2/20/90	Peaches Conway, Co. Clerk	Absentee Ballot Box Seals	45387	General	960.34
2/19/90	Hart Graphics, Inc.	Invoice #0205272 - Office Supplies - Co. Clk.	45388	General	16.86
2/19/90	John Toner	Expense to School in Houston, Texas	45491	General	64.08
2/20/90	Thomas J. Hamilton, J.P.#1	Inquest on Fred Stewart Greenlee, Jr. and Louie Cleveland Jones	45492	General	82.00
2/20/90	Lufkin Typewriter & Cash	Invoice #9719 - Ribbons - Dist. Clerk	45493	General	50.00
		Invoice #9021 - Typewriter - J.P.#1			
2/21/90	Rogers Office Supply	Invoice #9687 - Overhaul Swintec. Co. Clk.	45494	General	505.25
		Invoice #3983,4090,#4131,#4134,#4135,#4151 and #4273 - Office Supplies	45496	General	262.54
2/22/90	T.A.A.O.	Membership Dues 1-1/90 - 12/31/90 - Tax Col.	45497	General	40.00
2/26/90	Jerry B. Sanders	Labor on old Sexton School (No.5 Voting Pct.)	45495	General	343.75

Grand Total

Approved: [Signature]  
 County Judge

Attest: [Signature] - 3/1/90  
 County Clerk Date

[Signature]  
 Comm. Pct. 1

[Signature]  
 Comm. Pct. 2

[Signature]  
 Comm. Pct. 3

[Signature]  
 Comm. Pct. 4

Fund Totals

General  
~~XXXXXX~~  
~~XXXXXXXXXXXXXXXXXXXX~~  
 Total \$3,811.44

Sabine County, Texas  
 Summary of claims to be approved February 26, 1990

Date Received	Vendor Name	Brief Description	Check#	Account	Amount
2/12/90	First State Bank	Social Security and Withholding for wages paid 2/9/90	45291	Salary	\$ 369.10
2/15/90	David Burdette	Salary - 88 hrs. @ 3.80	45351	Salary	305.82
2/16/90	First State Bank	Social Security and Withholding for wages paid 2/15/90	45366	Salary	3,397.39
2/20/90	Calvin James Berton	Salary 625.50 - 1/2 Month; Ins.benefit 60.50	45389	Salary	503.00
2/20/90	Herman W. Bragg	Salary 205.00 - 1/2 Month; Ins.benefit 121.00	45390	Salary	271.26
2/20/90	Herman W. Bragg	Expense	45391	Salary	46.50
2/20/90	Freda Chambers	Salary 441.00 - 1/2 Month; Ins.benefit 60.50	45392	Salary	420.64
2/20/90	Clarice Clark	Salary 882.00 - Insurance benefit 121.00	45393	Salary	745.07
2/20/90	Paul D. Clark	Salary 48.00; Insurance benefit 121.00	45394	Salary	134.22
2/20/90	Paul D. Clark	Expense	45395	Salary	55.80
2/20/90	James H. Conn	Salary 695.50 - 1/2 Month; Ins.benefit 60.50	45396	Salary	553.74
2/20/90	James H. Conn	Expense	45397	Salary	372.00
2/20/90	Chester Cox, Sr.	Salary 1,391.00 - Insurance benefit 121.00	45398	Salary	1,107.49
2/20/90	Chester Cox, Sr.	Expense	45399	Salary	372.00
2/20/90	Jeffrey Lee Cox	Salary 48.00 - Insurance benefit 121.00	45400	Salary	144.22
2/20/90	Jeffrey Lee Cox	Expense	45401	Salary	55.80
2/20/90	Lawton Crain	Salary 882.00 - Insurance benefit 121.00	45402	Salary	705.07
2/20/90	Johnny Ray Davis	Salary 276.42	45403	Salary	203.97
2/20/90	Daniel R. Featherston	Salary 205.00 - Insurance benefit 121.00	45404	Salary	278.26
2/20/90	Daniel R. Featherston	Expense	45405	Salary	388.75
2/20/90	Lowell Fletcher	Salary 441.00 - 1/2 Month; Ins.benefit 60.50	45406	Salary	372.54
2/20/90	Herbert W. Fortson, III	Salary 475.00 - Insurance benefit 121.00	45407	Salary	508.46
2/20/90	Nadine Gary	Salary 630.00 - 1/2 Month; Ins.benefit 60.50	45408	Salary	506.84

Grand Total

Approved: [Signature]  
 County Judge

Attest: [Signature] - 3/1/90  
 County Clerk Date

[Signature]  
 Comm. Pct. 1

[Signature]  
 Comm. Pct. 2

[Signature]  
 Comm. Pct. 3

[Signature]  
 Comm. Pct. 4

Fund Totals  
 Salary  
~~XXXXXXXXXX~~  
~~XXXXXXXXXX~~  
~~XXXXXXXXXX~~  
 Total =

Sabine County, Texas  
 Summary of claims to be approved February 26 , 1990

Date Received	Vendor Name	Brief Description	Check#	Account	Amount
2/20/90	Joe Bob Golden	Salary	45409	Salary	\$ 64.42
2/20/90	Blan Greer	Salary 1,391.00; Insurance benefit 121.00	45410	Salary	1,159.49
2/21/90	Blan Greer	Expense	45411	Salary	538.96
2/21/90	Pattie Norwood	Salary 401.00 - 1/2 Month; Ins.benefit 60.50	45412	Salary	344.40
2/21/90	Thomas J. Hamilton	Salary 205.00; Insurance benefit 121.00	45413	Salary	301.06
2/21/90	Thomas J. Hamilton	Expense	45414	Salary	381.00
2/21/90	Theresa Husband	Salary 630.00 - 1/2 Month; Ins.benefit 60.50	45415	Salary	493.35
2/21/90	Millard Jordan	Salary 48.00; Insurance benefit 121.00	45416	Salary	144.22
2/21/90	Millard Jordan	Expense	45417	Salary	55.80
2/21/90	Carlin McDaniel	Salary 695.50 - 1/2 Month; Ins.benefit 60.50	45418	Salary	605.25
2/21/90	Carlin McDaniel	Expense	45419	Salary	372.00
2/21/90	Janice McDaniel	Salary 401.00 - 1/2 Month	45420	Salary	302.27
2/21/90	Billy Joe McGee	Salary 1,391.00; Insurance benefit 121.00	45421	Salary	876.34
2/21/90	Billy Joe McGee	Expense	45422	Salary	372.00
2/21/90	Charles Mitchell	Expense	45423	Salary	42.00
2/21/90	Freddie Moody	Salary 401.00 - 1/2 Month; Ins.benefit 60.50	45424	Salary	343.90
2/21/90	Iris Murray	Salary 339.50 - 1/2 Month; Ins.benefit 60.50	45425	Salary	354.90
2/22/90	Johnnie L. Palmer	Salary 441.00 - 1/2 Month; Ins.benefit 60.50	45426	Salary	385.54
2/22/90	Yvette Louise Parks	Salary 441.00 - 1/2 Month; Ins.benefit 60.50	45427	Salary	372.04
2/22/90	Thomas R. Philips	Salary 441.00 - 1/2 Month; Ins.benefit 60.50	45428	Salary	411.04
2/22/90	Dawn D. Procell	Salary 401.00 - 1/2 Month; Ins.benefit 60.50	45429	Salary	376.70
2/22/90	Mary Lou Russell	Salary 882.00; Insurance benefit 121.00	45430	Salary	695.07
2/22/90	Tammy Sepulvado	Salary 401.00 - 1/2 Month; Ins.benefit 60.50	45431	Salary	344.40
2/22/90	Barbara A. Smith	Salary	45432	Salary	378.96
2/22/90	J. L. Smith	Salary	45433	Salary	64.00

Grand Total

Approved:

County Judge

*C. Carlin McDaniel*  
 Comm. Pct. 1

*Billy McDaniel*  
 Comm. Pct. 2

Attest:

County Clerk

*James Brown*  
 Comm. Pct. 3

Date

*Nadine Gray - 3/1/90*

*Charles D. Carter*  
 Comm. Pct. 4

Fund Totals

Salary  
 XXXXX  
 XXXXX  
 XXXXX

Total

Sabine County, Texas  
 Summary of claims to be approved February 26, 1990

Date Received	Vendor Name	Brief Description	Check#	Account	Amount
2/22/90	Royce C. Smith	Salary 695.50 - 1/2 Month; Ins.benefit 60.50	45434	Salary	\$ 553.75
2/22/90	Royce C. Smith	Expense	45436	Salary	372.00
2/22/90	Billy Don Sparks	Salary 1,251.00; Insurance benefit 121.00	45437	Salary	979.01
2/22/90	Ollie Faye Sparks	Salary 630.00 - 1/2 Month; Ins.benefit 60.50	45438	Salary	468.35
2/22/90	Vicky G. Sublett	Salary 76.00	45439	Salary	70.19
2/22/90	Jack R. Tagliarini	Salary 205.00; Insurance benefit 121.00	45440	Salary	278.27
2/22/90	Jack R. Tagliarini	Expense	45441	Salary	46.50
2/22/90	John Toner	Salary 268.84	45442	Salary	268.84
2/22/90	John Toner	Expense	45443	Salary	150.00
2/22/90	Gene Walker	Salary 663.43	45444	Salary	482.28
2/22/90	Kyle D. Walker	Salary 215.50 - 1/2 Month; Ins.benefit 60.50	45445	Salary	215.57
2/22/90	Kyle D. Walker	Expense	45446	Salary	104.15
2/22/90	Tanya K. Walker	Salary 630.00 - 1/2 Month; Ins.benefit 60.50	45447	Salary	506.85
2/22/90	Jerry Dan Webb	Salary 48.00; Insurance benefit 121.00	45448	Salary	144.23
2/22/90	Jerry Dan Webb	Expense	45449	Salary	55.80
2/22/90	Alvie R. Welch	Salary 48.00; Insurance benefit 121.00	45450	Salary	144.23
2/22/90	Alvie R. Welch	Expense	45451	Salary	55.80
2/22/90	Bobby G. White	Salary 205.00; Insurance benefit 121.00	45452	Salary	271.27
2/22/90	Bobby G. White	Expense	45453	Salary	46.50
2/22/90	Bruce White	Salary 625.50 - 1/2 Month; Ins.benefit 60.50	45454	Salary	387.44
2/22/90	Rhonda Williams	Salary 441.00 - 1/2 Month; Ins.benefit 60.50	45455	Salary	385.54
2/23/90	Johnnie Lou Palmer	Salary 1/2 hr. @ 7.62 - Overtime	45456	Salary	3.25
2/23/90	Clarice Clark	Salary 1 hr. @ 7.62 - Overtime	45457	Salary	6.51
Grand Total					

Approved: Roy C. Smith  
 County Judge

Attest: Nadia Gray 5/1/90  
 County Clerk Date

Clarice McDaniel  
 Comm. Pct. 1

Billy McEly  
 Comm. Pct. 2

James Brown  
 Comm. Pct. 3

Charles D. Carlson  
 Comm. Pct. 4

Fund Totals  
 Salary  
~~XXXXXXX~~  
~~XXXXXXX~~  
~~XXXXXXXXXXXXXXXXXXXX~~  
 Total \$27,593.38

I, NADINE GARY, County Clerk of Sabine County, Texas do hereby certify  
that the foregoing instrument was filed \_\_\_\_\_ 1990 at  
\_\_\_\_\_ O'Clock \_\_\_\_\_ M. and duly recorded March 7  
1990 at 9:00 O'Clock A. M.

NADINE GARY

CLERK

*Janice McDaniel*

DEPUTY