

On June 15, 1994 the Sabine County Commissioners' Court met in a Emergency session
The following members were present:

John L. Hyden	County Judge
Keith C. Clark	Commissioner Pct. # 1
Lynn Smith	Commissioner Pct. # 2
Carolyn White	Commissioner Pct. # 3
Chester D. Cox, Sr.	Commissioner Pct. # 4
Louise Clark	Chief Deputy Clerk

Meeting called to order at 1:10P.M. All members of the court were present.

Judge Hyden opened the meeting with prayer.

Agenda item # 1-- Two bids recieved (1) Con-Equip., Inc. at \$260.479.00. (2) Geo. P. Banes Inc. \$259.850.00.

Judge Hyden made a motion to accept the bids as they are presented. Commissioner Clark seconded the motion .

Commissioner Clark stated that the bids were a lot more than he had expected and that personally he couldnt accept either one of them. Commissioner Smith stated that they were exactly in the range he was expecting.

Commissioner Cox stated that the question of the use of the machine needs to be settled before the purchase of one is made

Commissioner Smith read from the " Guide to Texas Laws for Public Officials" code # 791.025 . Commissioner Smith stated that it would be feasible just for our County alone that there has been over \$200.000 spent on rock in the last ten months.

Judge Hyden stated that the most it would cost our County to operate this equipment would be \$180.000.00 per year. and the best it would be \$150.600.00 . He also said if 32,000 to 40,000 yards of gravel was used per year it would benefit the County to purchase this equipment.

Commissioner Clark said if he could get the gravel at \$4.50 per yard that it wasn't feasible to purchase the equipment.

Judge Hyden made a motion to delay discussion at this time. Commissioner Clark seconded that motion. All voted for. Motion carried.

Agenda item # 2-- Commissioner Cox stated he wants the court to undo what was done to Pct. # 4 last year. I think the percentage should be. 24% for Pct's # 1, 2, & 3 and 28% for Pct. # 4.

Commissioner Smith made a motion to give 22% to Pct. # 1 and 25% to Pct's # 2 and # 3 and Pct. # 4 28%. Judge Hyden seconded the motion . Commissioner Smith voted for. Commissioners Clark, White, And Cox and Judge Hyden voted against motion failed.

Judge Hyden made a motion to give each Pct 25% straight across the board. Commissioner Clark seconded the motion. Commissioner Clark and Judge Hyden voted for. Commissioners Smith, White, And Cox voted against. motion failed.

Commissioner Clark made a motion that Pct's 1, 2, & 3 get 24% and Pct. # 4 27%. motion withdrawn.

Judge Hyden made a motion to give Pct's # 1, 2, and # 3 - 24.5%. and Pct. # 4 25.5%. Commissioner Clark seconded the motion . Commissioner Clark stated that it wouldnt work that way. Judge Hyden stated he would restate his motion.

Judge Hyden made a motion to give Pct's # 1, 2, and # 3 24.5%. and Pct. # 4 26.5%. Commissioner Clark seconded the motion. Motion carried with Judge Hyden, Commissioners Clark, and Commissioner Cox voting for and Commissioners Smith and White Voting against.

Discussions on changing the fees on license plates from \$5.00 to \$10.00 to be effective January 1, 1995. The change would need to be done on September 1, 1994.

Recess was called.

Court back in session at 2:40 P. M. everyone in agreement that the fees should be raised from \$5.00 to \$10.00. This item to continue at another time.

Judge Hyden purposed that operations at County Barn to be moved to the Court House with the Judges Secretary to be the Commissioners secretary when he gets his Judicial Secretary.

Judge Hyden asked the Commissioners to add a 6% raise in there budgets.

Commissioner Smith made a motion that the road and bridge employees be raised up to as much as \$8.00 per hour maximum. Judge Hyden seconded the motion. Motion carried.

Judge Hyden stated that his case load was going to increase when he starts trying juveniles . He will make a recommendation Sept. 1, 1994 for additional pay in his budget to compensate for this.

Discussions to resume on Rock Grinder.

Judge Hyden made a motion that should this Court purchase the Rock Grinding Equip. That no material shall be sold to any other Governmental Agency, or any other person except Sabine Counties own Precints until such time as there is an opinion from the Attorney Generals Office that this is legal and proper. Then we will decide at that time if we will sale it or not. Commission Cox seconded the motion. Motion Carried.

Commissioner Smith made the motion to reject both bids. Commissioner Cox seconded the motion. Judge Hyden, Commissioners Clark and Cox voted against . Commissioners Smith and White voted for. Motion failed.

Judge Hyden made the motion that the County purchase this equipment from Con-Equip, Inc. on a contingent on securing lease financing. Commissioner Smith seconded the motion. Discussion on a complete commentment of 8,000 yards of rock per year for each pct.

Judge Hyden moved to amend the motion that its approved if its unanimous. Commissioner Smith seconded the amendment. Motion carried. Motion now should read move to purchase or to except the bid from Con-Quip., Inc. on contingent on securing lease financing in the amount of \$260,479.00 and that it be a unanimous vote for approval. Any discussion on the motion as amended. Motion carried as amended.

With regards to the operation and accounting of funds any action previously taken by the court is recended and the following is applicable.

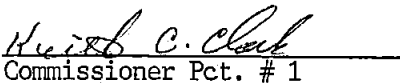
- (1) Each Pct. will be charged \$5.00 per yard against there rock gravel account.
- (2) A special road and bridge account to be established to reflect all revenue and cost applicable to the rock grinding operation.
- (3) At the end of each quarter or as may otherwise might be determined by majority vote in Court ^{1990 H.C.E. SLS} not to exceed current budget year. Any and all excess funds shall be redistributed back to the individual Pct. based on there percent of yards purchased verses total yards invoiced.
- (4) Should at any time there be sale to another Government entity such sale shall be accounted for separatly and there contribution to profit will be divided equally among the Pcts.

Judge Hyden made a motion that these four things be put into a motion. Commissioner Cox seconded the motion .

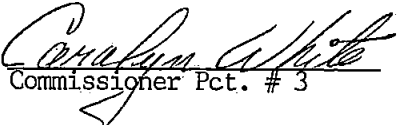
It was agreed among all Commissioners that each would make a minimal commitment of 8,000 yards (\$40,000) to the gravel operation in fiscal year 1994 and 1995.

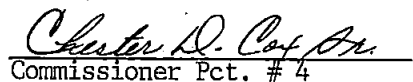
Commissioner Clark made a motion to ajourne meeting. Commissioner White seconded the motion. Motion carried.

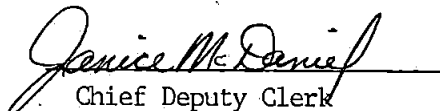

County Judge


Commissioner Pct. # 1


Commissioner Pct. # 2


Commissioner Pct. # 3


Commissioner Pct. # 4


Chief Deputy Clerk



Rejected

GEO. P. BANE, INC. / 3402 N NE LOOP 323 / TYLER, TEXAS 75708 / 903/597-6641

MAILING ADDRESS:
GEORGE P. BANE, INC.
P.O. BOX 4665
TYLER, TEXAS 75712-4665

June 10, 1994

Sabine County #2
P. O. Box 720
Hemphill, Texas 75948

Dear Honorable Judge and Commissioners Court:

Please let me take this opportunity to thank you for considering George P. Bane, Inc., in the purchase of your new Excavator.

George P. Bane, Inc., has been serving Sabine County with all of your Machinery needs for over 30 years. We hope to further our relationship with Sabine County with a new Excavator.

Our Bid is as Follows:

Kobelco SK300LCIII Excavator, air conditioning, Rockmaster attachment and all necessary piping for attachment. \$259,850.00

Terms: Cash upon delivery.

Delivery: 30 Days

There is a 6 month Limited Warranty on the Rockmaster attachment as explained to Commissioner Lynn Smith by Ray Jackson, President of Rockmaster Equipment Manufacturing, Inc. All Warranties will be handled by Rockmaster Equipment Manufacturing, Inc.

Again, I appreciate your consideration and I look forward to working with you in the future.

If you have any questions, please don't hesitate to contact Renny Reed or myself.

Sincerely,
George P. Bane, Inc.

George P. Bane, III
Sales Manager

GPB, III/rh

CONSTRUCTION EQUIPMENT
SALES · SERVICE · PARTS · RENTALS

Vol / pg 163



CON-EQUIP INC.

Accepted

May 27, 1994

County of Sabine
Office of the County Clerk
P. O. Box 580
Hemphill, TX 75948

ATTN: County Clerk

BID #: R+B-1994-3

QUOTATION #: MW-0527-236

Dear Sirs:

We are pleased to offer the following proposal for one new 1994 Link-Belt hydraulic excavator for your upcoming requirements:

NEW 1994 LINK-BELT LS-4300C SERIES II HYDRAULIC EXCAVATOR EQUIPPED AS FOLLOWS:

ENGINE:

Cummins 6CTA8.3 turbocharged, water cooled, 4-cycle diesel, 6 cylinder 504.5 CID, 24-volt starting system, 40 amp alternator, dry type single element air cleaner, 214HP @ 2200 RPM.

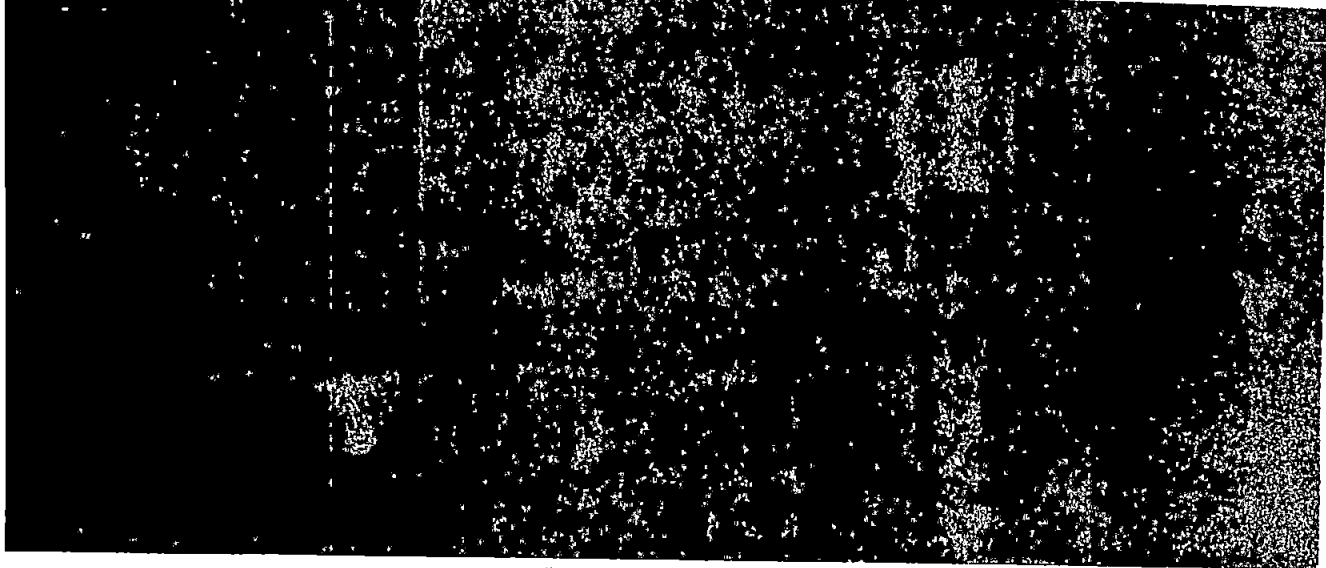
CONTROLS:

CAPS hydraulic system, digging mode selector, disc type swing brake, spare accessory valve, low effort SAE controls, one-touch decelerator, find control selector, cushion attachment control, single pedal travel and free-swing control.

CAB:

Sound proofed, shock mounted, electronic service monitor, cab heater, cab fan, windshield wiper, AM/FM radio, seat belt, horn, domelight, fully adjustable reclining operator's seat with lift up arm rest and floor mat, Lexan sliding windows, removable safety glass front window with vandal covers, vandalism locks/guarding, battery lighting system, and air conditioning.

Vol Pg 164



THE STATE OF TEXAS
COUNTY OF SABINE
I HEREBY CERTIFY THAT THESE DOCUMENTS WERE FILED AND
DULY RECORDED IN THE COMMISSIONERS COURT MINUTES OF SABINE
COUNTY, TEXAS.



VOL. Y PAGE 163
Janice McDaniel County clerk
by Louise Clark
DEPUTY

Page 2
MW-0527-236

UPPER:

12,125 LB. Counterweight, upper tubing cover plates, turntable bearing.

LOWER:

8'6" gauge by 15'11" long tractor type lower, 31.5" 3-Bar grouser track shoes, sealed rollers and idlers, independent two-speed hydrostatic travel with compact drive, disc type parking brakes and lower undercovers.

ATTACHMENT:

21'2" one piece boom, 10'7" long arm with all cylinders and linkage, boom hoist holding valve. 35'11" reach at ground level.

ROCK GRINDER:

New Rockmaster grinding head-installed.

HYDRAULIC PLUMBING:

Con-Equip will plumb these machines to the end of the stick ready to install Rockmaster. 200 gallon capacity. 100 GPM to the grinding head (Rockmaster). Pressure set at 3500 PSI.

WEIGHT:

70,000 lbs.

LIST PRICE WITH ROCKMASTER	\$ 317,625.00
SPECIAL DISCOUNT	(\$ 57,146.00)
NEW SALE PRICE - COMPLETE WITH ROCKMASTER	\$ 260,479.00
F. O. B.	DELIVERED TO SABINE COUNTY

DELIVERY:

Currently (June 1, 1994) we have a unit in stock already plumbed for the Rockmaster, available for immediate delivery. If this machine is sold at the time of your bid opening, delivery would be 10 days after receipt of order.

Con-Equip will be happy to assist with lease or financing arrangements at your request.

The new units come with a full Link-Belt new machine warranty of 12 months/1,500 hours on the entire machine and an additional 12 months/1,500 hours powertrain warranty (a total of 24 months/3,000 hours).

Vol Y Pg 165

