

September 12, 1994, the Sabine County Commissioner's Court met in a regular meeting. The following members were present:

John L. Hyden	County Judge
Keith Clark	Commissioner Pct. #1
Lynn Smith	Commissioner Pct. #2
Carolyn White	Commissioner Pct. #3
Chester D. Cox, Sr.	Commissioner Pct. #4
Janice McDaniel	County Clerk

Judge Hyden called the meeting to order at 8:35 A.M.

Bro. Clarence Howell led the Court in prayer.

Judge Hyden informed the people present that approximately two years ago the Court adopted the rules governing the procedures of the Commissioner's Court. Members of the public have to request and fill out a public participation form and turn this form in to the County Clerk, County Judge or one of the Commissioners. At this time, the County Judge or one of the Commissioners will make a decision to have this person put on the agenda that he or she may participate in the discussion of the item requested. The Court may waive the rule and let a person speak. These forms must be turned in to the authorized persons in time for them to be placed on the agenda before posting. At this time, Judge Hyden told the public present that the Court would allow anyone present wishing to address the Court to fill out one of these forms and give it to the County Clerk before the item to be discussed is brought before the Court.

Minutes of the August 22nd. regular meeting and September 1st. Special called meeting were read. A correction under agenda item #5 on the August 22nd regular meeting from Bo Rig Road to Bo Rig Creek. Commissioner Clark made the motion to approve the corrected minutes. Commissioner Smith seconded. All voted for. Motion carried.

Agenda item #2- Approve Emergency Management Plan

Judge Hyden made the motion to accept the plan as submitted by the emergency management coordinator. Commissioner Smith seconded. All voted for. Motion carried.

Agenda item #3- First Judicial District-Juvenile Probation Budget

No action needs to be taken by this Court on this budget. Section 140.004 of the Government Code requires that a juvenile probation department serving more than one County shall file a copy of its proposed operating budget with each Commissioner's Court before its final approval by the juvenile board. There were no comments from the Court. See attached exhibit.

Agenda item #4-RFP - Auditor

Two proposals were received. Ken Rogers and Associates out of Nacogdoches, Tx. estimated fee is \$9,750.00 for each audit. The proposal includes the audit for the years ending September 30, 1994, 1995 and 1996. Alexander, Lankford and Heirs estimated fee for audits is \$10,000.00 year ending September 30, 1994, \$10,300.00 year ending September 30, 1995 and \$10,600.00 year ending September 30, 1996.

Commissioner Clark made a motion to table this item. Commissioner Cox seconded. Motion is tabled at this time.

Agenda item #5 - RFP - Voting Machine

One proposal was received. Hart Forms and Services proposal is for an AIS-150 Optical Scan Tabulation System is \$21,595.00 plus \$585.00 for thirteen ballot boxes for a total price of \$22,180.00. Mark White with Hart Forms was present at the meeting to answer any questions. The rated life expectancy of the machine is 22 years. After some discussion, Judge Hyden made the motion to table any further action until the special called meeting to be set for later this week. Commissioner Smith seconded. All voted for. Motion carried.

Agenda item #7-Wade Forbes - Ellison Estate Subdivision

Wade Forbes of 4150 Rice Blvd., Houston, Tx. 77005 was sworn by Judge Hyden. Judge Hyden made the motion to table this item for the time being and to be considered later in this meeting. Commissioner Clark seconded. All voted for. Motion carried.

Commissioner Clark made the motion to bring agenda item #4 RFP-Auditor back from the table. Commissioner Cox seconded.

Judge Hyden made the motion that the awarding of the audit contract be to Ken Rogers and Associates for the fiscal years ending September 30, 1994, 1995 and 1996. Commissioner Clark seconded. All voted for. Motion carried. See attached exhibits.

Agenda item #8-Off Road Bridges

Commissioner Clark made the motion to apply the bridge #250-1 on the road known as the Sister Tatom Road and the bridge #564-1 known as the Easley Creek Bridge to the off system bridge request to the Texas Department of Transportation. Commissioner White seconded. All voted for. Motion carried. Commissioner Cox wanted to make known for the record the number of the bridge in his precinct that a request has already been made for. The bridge # is 221-1.

Agenda item #9- Appointment of Texas Rural Leadership Program-Loretta Sterle-Facilitator This is a program by the Association of Electric Companies such as Deep East Texas Electric Co-op and other rural electric companies whereby they provide materials to local communities for the development of a leadership program. This is at no cost to the County. Judge Hyden made the motion to appoint Loretta Sterle as facilitator. Commissioner Clark seconded. All voted for. Motion carried.

Agenda item #10-Neely Whitehead Road - Final Determination

Judge Hyden made the motion that the Neely Whitehead Road, under final determination, does not exist as a public road and closure of such road has existed for a period substantially in excess of twenty years and shall remain so closed and no further action shall be had by this Court. Commissioner Clark seconded. All voted for. Motion carried. See attached exhibit. Both parties were notified stated Judge Hyden.

Agenda item #11-Approve 911 Agreement with Sabine County Appraisal District

Commissioner Cox made the motion to accept the agreement. Commissioner Smith seconded. All voted for. Motion carried. See attached exhibit.

Court recessed at 10:25 A.M.

Court reconvened at 10:48 A.M.

Commissioner Clark made the motion to remove agenda item #7-Wade Forbes-Ellison Estate Subdivision from the table. Commissioner Smith seconded. Commissioner Clark made the motion to accept the plat of Ellison Estate Subdivision. Commissioner Smith seconded. All voted for. Motion carried.

Agenda item #13-Constable Pct. #2

Commissioner Clark made the motion to table this agenda item until the next Court meeting. Commissioner Smith seconded. All voted for. Motion carried.

Agenda item #12-Consider Adoption of Model Subdivision Rules EDAP

Judge Hyden made the motion that the adoption of Model Subdivision rules be considered and approved. Commissioner Clark seconded. Commissioner Smith made the motion to table this motion and second until the next meeting later this week. Commissioner Cox seconded. Motion carried.

Agenda item #14-Approve 1994-'95 Holidays

Commissioner Clark made the motion to accept the holidays. Commissioner Smith seconded. All voted for. Motion carried. See attached exhibit.

Agenda item #6-John Toner-Continuing Education Certificates

Judge Hyden made the motion to move this agenda item to the next regular Commissioners' Court meeting. Commissioner Clark seconded. All voted for. Motion carried.

At this time, Judge Hyden accepted the two public participation forms that were turned in to the County Clerk. Mr. E. C. Berry and Mr. Marion Norman filled out the forms. Judge Hyden made the motion to let Mr. E. C. Berry address the Court. Commissioner Clark seconded. All voted for. Motion carried.

Mr. Berry told the Court that he appreciates the job the Court is doing and he believes that his tax dollars are being well spent.

Commissioner White seconded. Judge Hyden, Commissioner Clark, Commissioner Smith, and Commissioner Cox voted for. Commissioner White voted against. Motion carried.

Agenda item #16-Approve Budgeted Salaries

Commissioner Smith made the motion to approve the budget for the fiscal year 1994-95 as prepared by the County Judge. Commissioner Clark seconded. All voted for. Motion carried.

Commissioner Cox made the motion to accept questions from a lady present. Commissioner Smith seconded. The lady was not identified by name. She ask why the 17 prisoners in the jail are not being transferred to TDC. Commissioner Smith told her that not all 17 prisoners in the jail are to be sent to TDC. There are procedures that have to be done before you can take a prisoner to TDC explained by Sheriff Bradberry.

Agenda item #15-Adopt Tax Rate

Judge Hyden told Mr. Marion Norman that he may speak.

Mr. Norman told the Court that he is a retired citizen and on a fixed income as most retired people are. He is proud of the Court and the job that they are doing. He is proud to see that they are trying to get the Courthouse in a more presentable condition and is willing to pay the 4¢ tax rate increase.

Commissioner Smith made the motion to approve the tax rate of .38171 per \$100.00 evaluation. Commissioner Cox seconded. Judge Hyden, Commissioner Clark, Commissioner Smith, and Commissioner Cox voted for. Commissioner White voted against. Motion carried.

Agenda item #17-Approve Budgeted Salaries

Commissioner Clark made the motion to approve the budgeted salaries. Commissioner Cox seconded. All voted for. Motion carried.

Court recessed at 11:53 A.M.

Court was called to order under the emergency meeting scheduled for 11:00 A.M.

Agenda item #1- Two Resolutions to Apply to TDHCA For Funding of Water Improvements in the Daniels Community

Judge Hyden made the motion that the two Resolutions be approved and that the County Judge be allowed to sign on behalf of the County after the approving of the Resolutions. Commissioner Smith seconded. All voted for. Motion carried. See attached exhibits.

Commissioner Clark made the motion to adjourn the emergency meeting. Commissioner Smith seconded. Meeting adjourned.

Court reconvened into the regular Court meeting at 12:05 P.M.

Agenda item #18-Pay Accounts and Salaries

Commissioner Clark made the motion to pay the bill for the material to repair the bridge on the road to the rock pit out of R&B Special #3. Commissioner White seconded. Judge Hyden, Commissioner Clark, Commissioner White and Commissioner Cox voted for. Commissioner Smith opposed. Motion carried.

Commissioner Clark made the motion to approve the accounts and salaries. Commissioner White seconded. All voted for. Motion carried.

Agenda item #1-General Business

Report from County Extension Agent and report from JP #2 P1.1. Commissioner Clark made the motion to accept the reports as presented. Commissioner Cox seconded. All voted for. Motion carried.

Commissioner Cox made the motion to adjourn. Commissioner White seconded. Meeting adjourned.

*John W. Hyden*  
COUNTY JUDGE

*Keith C. Clark*  
COMMISSIONER PCT. #1

*Lynn Smith*  
COMMISSIONER PCT. #2

*Carolyn White*  
COMMISSIONER PCT. #3

*Chester W. Coffey*  
COMMISSIONER PCT. #4

*Janice McDaniel*  
COUNTY CLERK

FIRST JUDICIAL DISTRICT JUVENILE PROBATION DEPARTMENT  
PROPOSED BUDGET  
FISCAL YEAR - 1995

<u>RECEIPTS:</u>	<u>CURRENT BUDGET</u>	<u>PROPOSED BUDGET</u>
State Payments:		
State Aid	\$115,544	\$115,544
Community Corrections	107,472	107,472
County Contributions	18,077	18,077
Beginning Balance	10,000	-0-
<b><u>TOTAL RECEIPTS:</u></b>	<b><u>\$251,093</u></b>	<b><u>\$241,093</u></b>
 <u>EXPENDITURES:</u>		
<u>Personal Services:</u>		
Chief Juv. Prob. Officer	\$40,102	\$41,715
Juvenile Prob. Officer II	35,243	36,808
Juvenile Prob. Officer I	24,653	26,112
Juvenile Prob. Officer I	24,653	22,850
<b>TOTAL:</b>	<b>\$124,651</b>	<b>\$127,485</b>
 <u>Benefits:</u>		
Social Security	\$ 9,536	\$9,753
Hospitalization	11,434	11,436
Retirement	9,288	9,497
Unemp./Work Comp.	2,742	2,905
<b>TOTAL:</b>	<b>\$33,000</b>	<b>\$33,591</b>
 <u>Travel</u>		
Mileage	\$16,240	\$13,086
Per Diem	2,801	2,925
<b>TOTAL:</b>	<b>\$19,041</b>	<b>\$16,011</b>
 <u>Operating Expenses</u>		
Operating Expenses	\$10,500	\$10,836
 <u>Contract Services</u>		
Residential & Detention	\$48,500	\$51,740
Electronic Monito.	2,401	737
Psy.Test./Counseling	3,000	693
<b>TOTAL:</b>	<b>\$53,901</b>	<b>\$53,170</b>
 <u>Purchase of Equipment</u>		
Purchase of Equipment	\$3,000	\$0.00
<b><u>TOTAL EXPENDITURES:</u></b>	<b><u>\$244,093</u></b>	<b><u>\$241,093</u></b>
<b>ENDING BALANCE</b>	<b>\$7,000</b>	<b>\$0.00</b>

225 D9 / lw

Vol    Pg 354

THE STATE OF TEXAS  
COUNTY OF SABINE  
I HEREBY CERTIFY THAT THESE DOCUMENTS WERE FILED AND  
DULY RECORDED IN THE COMMISSIONERS COURT MINUTES OF SABINE  
COUNTY, TEXAS.

VOL. 1 PAGE 354  
Janice McDaniel, County Clerk  
by Laura Clark  
DEPUTY



Vol. 1 Pg. 355

*Accepted*

**PROPOSAL FOR AUDITS OF  
THE GENERAL PURPOSE FINANCIAL STATEMENTS OF  
THE COUNTY OF SABINE, TEXAS  
FOR THE YEARS ENDING SEPTEMBER 30, 1994, 1995, AND 1996**

**BY**

**KEN ROGERS & ASSOCIATES, LTD.  
1329 NORTH UNIVERSITY DRIVE  
NACOGDOCHES, TEXAS 75961**

**SEPTEMBER 9, 1994**

**CONTACT PERSON**

**TERRE MCLEMORE, CPA  
(409) 564-8186**

**KEN ROGERS & ASSOCIATES, LTD.**  
**CERTIFIED PUBLIC ACCOUNTANTS**  
**A LIMITED LIABILITY COMPANY**

Ken Rogers, CPA (retired)  
Gary Johnson, CPA  
Michael Hall, CPA  
Terre McLemore, CPA  
Kenneth Rodrigues, CPA

September 9, 1994

Honorable Judge and County Commissioners  
Sabine County  
Hemphill, Texas 75948

We are pleased to submit our proposal to conduct the annual audits of the general purpose financial statements of Sabine County, Texas as of and for the years ending September 30, 1994, 1995 and 1996.

Our estimated fee will be \$9,750 for each audit.

If you agree with the terms of our proposal, please sign the enclosed engagement letter and return it to us. The person who is authorized to make representations for Ken Rogers & Associates, Ltd. is Terre McLemore, CPA.

If you have any questions concerning this proposal, do not hesitate to contact us at your convenience.

Very truly yours,

*Ken Rogers & Associates, Ltd.*  
KEN ROGERS & ASSOCIATES, LTD.

1329 N. University Drive      Nacogdoches, Texas 75961  
(409) 564-8186    FAX (409) 564-3811    (800) 846-1866

Member of American Institute of Certified Public Accountants S.E.C. and Private Companies Practice Sections

Vol Y Pg 357

PROPOSAL TO CONDUCT THE ANNUAL AUDITS OF THE GENERAL PURPOSE  
FINANCIAL STATEMENTS OF SABINE COUNTY, TEXAS

Ken Rogers & Associates, Ltd. is a member of the American Institute of Certified Public Accountants Private Companies Practice Section and, therefore, is required to undergo a peer review every three years. The firm has received a clean opinion from all reviews since inception. Our peer review plan calls for inspections every year and an outside review every three years. Our firm has been a member in good standing of the AICPA and TSCPA since inception (as either Ken Rogers & Associates or its predecessor, Alexander & Rogers).

Ken Rogers & Associates, Ltd. is a Nacogdoches firm with its office located at 1329 N. University Drive, Nacogdoches. The officers are as follows:

Ken Rogers, CPA (retired)  
Gary Johnson, CPA  
Michael Halls, CPA  
Terre McLemore, CPA  
Kenneth Rodrigues, CPA

We have extensive experience in the performance of county and other governmental audits. Our current audit clients include Newton County, Hemphill Independent School District, and approximately ten other governmental units.

Our approach to auditing is one of proper planning and good organization. The typical assistance expected from County personnel will include the preparation of a detailed trial balance, bank reconciliations, and typing certain correspondence. We will also have numerous questions concerning procedures and policies and will request client representation and legal representation letters be prepared and signed by the appropriate County Officials.

Our audits will be Single Audits conducted in accordance with generally accepted auditing standards; the standards for financial audits contained in Government Auditing Standards, issued by the Comptroller General of the United States; the Single Audit Act of 1984; and the provisions of OMB Circular A-128, "Audits of State and Local Governments," and will include tests of the accounting records of Sabine County and other procedures we consider necessary to enable us to express an unqualified opinion that the financial statements are fairly presented, in all material respects, in conformity with generally accepted accounting principles and to report on the Schedule of Federal Financial Assistance and on Sabine County's compliance with laws and regulations and its internal accounting controls as required for a Single Audit.

The audits shall include all funds and account groups of the County. We shall assist in finalizing the County's annual financial report and shall include an opinion in that report regarding the County's financial statements and supplemental financial schedules. We will have the responsibility of printing copies of the reports and the management letters.

We shall study and evaluate the adequacy of the systems of internal control. If reportable conditions are noted, appropriate recommendations shall be reviewed with the County Judge and included in our report to the County Commissioners.



Sabine County Audit Proposal

Our fees for these services are based on the actual time spent at our standard hourly rates, plus travel and other out-of-pocket costs such as report production, typing, postage, etc. Our standard hourly rates vary according to the degree of responsibility involved and the experience level of the personnel assigned to your audit. Our invoices for these fees will be rendered each month as work progresses and are payable on presentation. The estimated fee for each audit will be \$9,750. This estimate is based on anticipated cooperation from your personnel and the assumption that unexpected circumstances will not be encountered during the audit. If significant additional time is necessary due to unexpected circumstances, we will discuss it with you and arrive at a new fee estimate before we incur the additional costs.

The audit team will be composed of:

Name	Level	Hourly billing rate
Terre McLemore, CPA	Officer	\$80
Brent Bower, CPA	Audit manager	\$60
One staff accountant	Staff	\$35

*Rejected*

PROPOSAL FOR AUDIT OF  
SABINE COUNTY, TEXAS

FOR THE YEARS ENDED SEPTEMBER 30, 1994,  
SEPTEMBER 30, 1995 AND SEPTEMBER 30, 1996

ALEXANDER, LANKFORD & HIERS, INC.  
CERTIFIED PUBLIC ACCOUNTANTS  
4000 SOUTH MEDFORD  
LUFKIN, TEXAS 75901-5799  
(409)632-7771

GLEND A. HIERS, CPA

SEPTEMBER 9, 1994

Wilbur E. Alexander, CPA  
Ted A. Lankford, CPA  
Glenda J. Hiers, CPA  
Melvin R. Todd, CPA  
Richard A. Rudel, CPA  
Betty Powell, CPA  
Warren Stewart, CPA

# AL&H ALEXANDER LANKFORD & HIERS, INC.

Certified Public Accountants, A Professional Corporation

4000 S. Medford Dr.  
Lufkin, Texas 75901-7599  
(409) 632-7771  
FAX (409) 637-2448

Honorable Larry Hyden, County Judge  
and Members of the Commissioners' Court  
Sabine County, Texas  
Hemphill, Texas

THE STATE OF TEXAS  
COUNTY OF SABINE  
I HEREBY CERTIFY THAT THESE DOCUMENTS WERE FILED AND  
DULY RECORDED IN THE COMMISSIONERS COURT MINUTES OF SABINE  
COUNTY, TEXAS.



VOL. 11 PAGE 360  
Janice McDaniel, County Clerk  
by Louise Clark  
DEPUTY

Dear Honorable Larry Hyden and Commissioners:

We appreciate the opportunity to submit a proposal to provide audit services for Sabine County, Texas.

We understand that our audit will be a Single Audit conducted in accordance with generally accepted auditing standards and that the contract to be awarded is for the years ended September 30, 1994, September 30, 1995 and September 30, 1996. We estimate that each audit will require 325 hours and our total fee is estimated not to exceed \$10,000 for September 30, 1994, \$10,300 for September 30, 1995 and \$10,600 for September 30, 1996.

Based on our previous experience in conducting governmental audits, our familiarity with your organization, and expected assistance from your staff, our work schedule is established as follows for the 1994 audit:

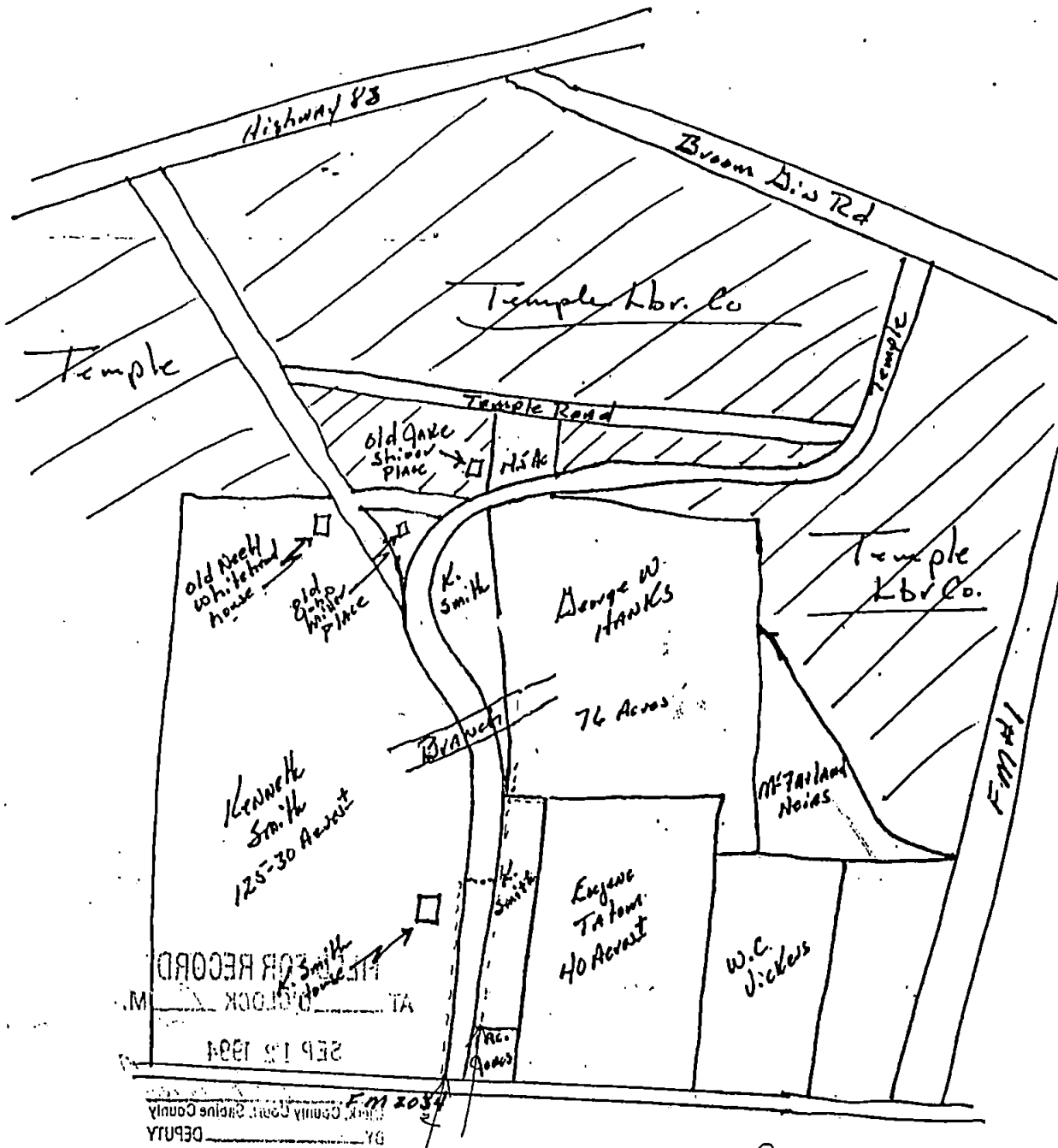
- . December - January, 1995 - Fieldwork, workpaper review, and preparation of draft reports
- . February, 1995 - Submit final report
- . March, 1995 - Presentation of report to the County Commissioners' Court

This schedule commits our organization to the final presentation of the report no later than March of each year.

Designated to make presentations for our firm are the following:

Glenda J. Hiers, CPA  
Audit Officer  
Alexander, Lankford & Hiers, Inc.  
4000 South Medford Drive  
Lufkin, Texas 75901-5799  
(409) 632-7771

Richard A. Rudel, CPA  
Audit Manager  
Alexander, Lankford and Hiers, Inc.  
4000 South Medford Drive  
Lufkin, Texas 75901-5799  
(409) 632-7771



Dotted line indicates no fence.

808 27 1 104

Vol. 7 Pg 362



PROPOSED AGREEMENT

BETWEEN

SABINE COUNTY ADR PROJECT (9-1-1)

AND

SABINE COUNTY APPRAISAL DISTRICT

This Agreement made this \_\_\_\_\_ day of \_\_\_\_\_, 1994 is effective on the \_\_\_\_\_ day of \_\_\_\_\_, 1994 by and between the Commissioners Court of Sabine County, State of Texas (the County) and the Sabine County Appraisal District (the District).

WITNESSETH

WHEREAS, County desires to develop, implement and maintain an effective addressing system in Sabine County;

WHEREAS, County has legal authority to set addressing standards and name roadways in the unincorporated areas of the county;

WHEREAS, District maintains and requires a complete set of maps to locate, record and appraise all real property in the county;

WHEREAS, District maintains adequate facilities to house space required for use by County for equipment and personnel to meet objectives of the ADR Project;

WHEREAS, County and District realize the potential benefit of a cooperative joint effort whereby certain resources are pooled to attain specific goals of each party;

NOW, THEREFORE, the parties, in consideration of the mutual covenants and agreements herein contained, agree as follows:

(1) EQUIPMENT. County will provide computer hardware and software required to create a database. The database will be used to produce maps reflecting road names and structure addresses as well as other geographic and demographic information as may be required by County and/or District from time to time. This equipment will be the property of Sabine County and be provided for the purposes herein stated.

(2) PERSONNEL. County will provide trained personnel to operate the computer system during the implementation stage of the Sabine County ADR Project (9-1-1). Such personnel will be employed by the County and will work under the direction of the 9-1-1 Advisory Board as outlined in the 9-1-1 Communication/Addressing Operating Policies adopted by the County on November 8, 1994.

39008  
Vd   V   Pd   364

(3) ADDITIONAL EQUIPMENT/TRAINING. Any additional equipment required by either party to facilitate a specific task will be provided by party requiring such task at no expense or liability to other party.

(4) ACCESS TO EQUIPMENT. The District will provide access to equipment at any and all times as required by authorized personnel of the County. Computer access during the implementation phase of the Sabine County ADR Project (9-1-1) shall be restricted to authorized personnel of the County.

(5) OWNERSHIP AND CONTROL OF DATA FILES/RECORDS. All data files and records produced as a result of the ongoing Sabine County ADR Project (9-1-1) shall be the property of the County and control of same rest in the County. Upon the completion of the implementation phase of the Sabine County ADR (9-1-1) the County, at its discretion, will transfer ownership of equipment and related data files to the District.

(6) EQUIPMENT WARRANTIES. Neither party makes any representations or warranties, expressed or implied, about the fitness or performance, for general or particular purposes, of any of the equipment. Each party shall indemnify and hold harmless the other party from any and all claims or liabilities whatsoever, resulting from or stemming from such other party's actions or activities except where there exists a degree of gross negligence resulting in damage to equipment or loss of data or records.

(7) SECURITY. Each party shall act to protect the equipment, software and data files from unauthorized access and physical threats such as fire, smoke, etc. County personnel will acquaint themselves with the security procedures of the District and abide by the procedures at all times while at the District location.

(8) TERM; TERMINATION. (A) This agreement shall continue in full force and effect until terminated by either party hereto. (B) This agreement may be terminated by either party by providing sixty (60) days prior written notice to the other.

(9) NOTICES. Whenever under this agreement one party is required to give notice to the other, such notice shall, unless otherwise be provided herein, be deemed given if mailed by United States mail, first class, postage prepaid and addressed and delivered as follows:

If to Commissioners Court of Sabine County  
Sabine County ADR Project (9-1-1)  
P O Box 716  
Hemphill, Texas 75948

If to Sabine County Appraisal District  
P O Box 137  
Hemphill, Texas 75948

(10) Governing Law. This agreement shall be governed, construed and interpreted under the laws of the State of Texas and the applicable federal laws, rules and regulations of the United States of America.

(11) Entire Agreement; Amendment. This agreement constitutes the entire agreement between the parties hereto and supersedes all prior agreements, whether oral or written. This agreement may be amended only in writing if executed by duly authorized representatives of both parties hereto.

IN WITNESS WHEREOF, the parties hereto have executed this agreement on the day and year first above written.

Attest:

Commissioners Court of Sabine County

By: Chester D. Coates

Date: 9-12-94

Witness: Carolyn White

Attest:

Sabine County Appraisal District

By: Paul Williamson

Date: 8/25/94

Witness: Sammy Brewer



PROPOSED AGREEMENT

BETWEEN

SABINE COUNTY ADR PROJECT (9-1-1)

AND

SABINE COUNTY APPRAISAL DISTRICT

This Agreement made this \_\_\_\_\_ day of \_\_\_\_\_, 1994 is effective on the \_\_\_\_\_ day of \_\_\_\_\_, 1994 by and between the Commissioners Court of Sabine County, State of Texas (the County) and the Sabine County Appraisal District (the District).

WITNESSETH

WHEREAS, County desires to develop, implement and maintain an effective addressing system in Sabine County;

WHEREAS, County has legal authority to set addressing standards and name roadways in the unincorporated areas of the county;

WHEREAS, District maintains and requires a complete set of maps to locate, record and appraise all real property in the county;

WHEREAS, District maintains adequate facilities to house space required for use by County for equipment and personnel to meet objectives of the ADR Project;

WHEREAS, County and District realize the potential benefit of a cooperative joint effort whereby certain resources are pooled to attain specific goals of each party;

NOW, THEREFORE, the parties, in consideration of the mutual covenants and agreements herein contained, agree as follows:

(1) EQUIPMENT. County will provide computer hardware and software required to create a database. The database will be used to produce maps reflecting road names and structure addresses as well as other geographic and demographic information as may be required by County and/or District from time to time. This equipment will be the property of Sabine County and be provided for the purposes herein stated.

(2) PERSONNEL. County will provide trained personnel to operate the computer system during the implementation stage of the Sabine County ADR Project (9-1-1). Such personnel will be employed by the County and will work under the direction of the 9-1-1 Advisory Board as outlined in the 9-1-1 Communication/Addressing Operating Policies adopted by the County on November 8, 1994.

Vol    Pg 367

(3) ADDITIONAL EQUIPMENT/TRAINING. Any additional equipment required by either party to facilitate a specific task will be provided by party requiring such task at no expense or liability to other party.

(4) ACCESS TO EQUIPMENT. The District will provide access to equipment at any and all times as required by authorized personnel of the County. Computer access during the implementation phase of the Sabine County ADR Project (9-1-1) shall be restricted to authorized personnel of the County.

(5) OWNERSHIP AND CONTROL OF DATA FILES/RECORDS. All data files and records produced as a result of the ongoing Sabine County ADR Project (9-1-1) shall be the property of the County and control of same rest in the County. Upon the completion of the implementation phase of the Sabine County ADR (9-1-1) the County, at its discretion, will transfer ownership of equipment and related data files to the District.

(6) EQUIPMENT WARRANTIES. Neither party makes any representations or warranties, expressed or implied, about the fitness or performance, for general or particular purposes, of any of the equipment. Each party shall indemnify and hold harmless the other party from any and all claims or liabilities whatsoever, resulting from or stemming from such other party's actions or activities except where there exists a degree of gross negligence resulting in damage to equipment or loss of data or records.

(7) SECURITY. Each party shall act to protect the equipment, software and data files from unauthorized access and physical threats such as fire, smoke, etc. County personnel will acquaint themselves with the security procedures of the District and abide by the procedures at all times while at the District location.

(8) TERM; TERMINATION. (A) This agreement shall continue in full force and effect until terminated by either party hereto. (B) This agreement may be terminated by either party by providing sixty (60) days prior written notice to the other.

(9) NOTICES. Whenever under this agreement one party is required to give notice to the other, such notice shall, unless otherwise be provided herein, be deemed given if mailed by United States mail, first class, postage prepaid and addressed and delivered as follows:

If to  
Commissioners Court of Sabine County  
Sabine County ADR Project (9-1-1)  
P O Box 716  
Hemphill, Texas 75948

If to  
Sabine County Appraisal District  
P O Box 137  
Hemphill, Texas 75948

(10) Governing Law. This agreement shall be governed, construed and interpreted under the laws of the State of Texas and the applicable federal laws, rules and regulations of the United States of America.

(11) Entire Agreement; Amendment. This agreement constitutes the entire agreement between the parties hereto and supersedes all prior agreements, whether oral or written. This agreement may be amended only in writing if executed by duly authorized representatives of both parties hereto.

IN WITNESS WHEREOF, the parties hereto have executed this agreement on the day and year first above written.

Attest:

Commissioners Court of Sabine County

By: Charles D. Cox Sr.

Date: 9-12-94

Witness: Carolyn White

Attest:

Sabine County Appraisal District

By: \_\_\_\_\_

Date: \_\_\_\_\_

Witness: \_\_\_\_\_

THE STATE OF TEXAS  
COUNTY OF SABINE  
I HEREBY CERTIFY THAT THESE DOCUMENTS WERE FILED AND  
DULY RECORDED IN THE COMMISSIONERS COURT MINUTES OF SABINE  
COUNTY, TEXAS.



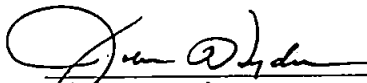
VOL. Y PAGE 364  
Janice M. Daniel County clerk  
by Louis Clark  
DEPUTY


Vol Y Pg 369

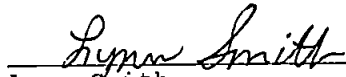
SABINE COUNTY  
1994-95 HOLIDAY SCHEDULE

Veteran's Day	November 11
Thanksgiving	November 24 & 25
Christmas	December 23 & 26
New Years	January 2
Martin Luther King Birthday	January 16
Good Friday	April 14
Memorial Day	May 29
Independence Day	July 4
Labor Day	September 4

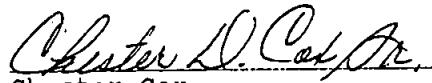
Approved this the 12th day of September, 1994.

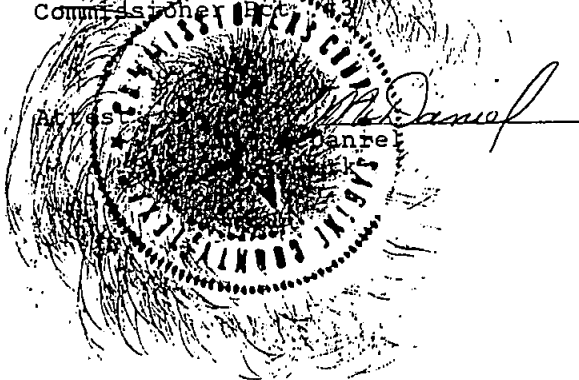
  
\_\_\_\_\_  
John L. Hyden  
County Judge

  
\_\_\_\_\_  
Keith Clark  
Commissioner Pct. #1

  
\_\_\_\_\_  
Lynn Smith  
Commissioner Pct. #2

  
\_\_\_\_\_  
Carolyn White  
Commissioner Pct. #3

  
\_\_\_\_\_  
Chester Cox  
Commissioner Pct. #4





THE STATE OF TEXAS  
**County of Sabine**  
 P.O. Box 720  
 Hemphill, Texas 75948

John L. Hyden, County Judge  
 Commissioners  
 Keith Clark Precinct 1  
 Lynn Smith Precinct 1  
 Kenneth White Precinct 1  
 Cheater Cox, Sr. Precinct 1

SABINE COUNTY COMMISSIONERS' COURT  
Public Participation Form

Instructions: Fill out all appropriate blanks. Please print or write legibly.

NAME: Marion Norman  
 HOME ADDRESS: Rt 1 Box 930B  
Hemphill, Tx 75968  
 HOME TELEPHONE: 787-2248  
 PLACE OF EMPLOYMENT: Retired  
 EMPLOYMENT TELEPHONE: \_\_\_\_\_

Do you represent any particular group or organization? NONE

If you do represent a group or organization, please state the name, address and telephone number of such group or organization.

Which agenda item (or items) do you wish to address? \_\_\_\_\_  
15 Budget / TAXES

In general, are you for or against such agenda item (or items)?  
FOR

Signature: Marion Norman

NOTE: This Public Participation Form must be presented to the County Clerk prior to the time that the agenda item (or items) you wish to address are discussed before the Court.

*[Handwritten signature]*



THE STATE OF TEXAS  
**County of Sabine**  
P.O. Box 720  
Hemphill, Texas 75948

John L. Hyden, County Judge  
Commissioners  
Keith Clark Precinct #1  
Lynn Smith Precinct #2  
Kenneth White Precinct #3  
Chester Cox, Sr. Precinct #4

SABINE COUNTY COMMISSIONERS' COURT

Public Participation Form

Instructions: Fill out all appropriate blanks. Please print or write legibly.

NAME: E. C. BERRY

HOME ADDRESS: HC 52, BOX 512

HOME TELEPHONE: 579-4058

PLACE OF EMPLOYMENT: —

EMPLOYMENT TELEPHONE: —

Do you represent any particular group or organization? NO

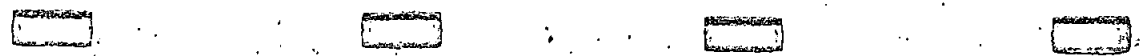
If you do represent a group or organization, please state the name, address and telephone number of such group or organization.

Which agenda item (or items) do you wish to address? NOT TO ADDRESS BUT TO ASK QUESTIONS

In general, are you for or against such agenda item (or items)?

Signature: E. C. Berry

NOTE: This Public Participation Form must be presented to the County Clerk prior to the time that the agenda item (or items) you wish to address are discussed before the Court.



RESOLUTION

A RESOLUTION OF THE COUNTY COMMISSIONERS COURT OF THE COUNTY OF SABINE, TEXAS AUTHORIZING THE SUBMISSION OF A TEXAS COMMUNITY DEVELOPMENT PROGRAM APPLICATION TO THE TEXAS DEPARTMENT OF HOUSING AND COMMUNITY AFFAIRS FOR THE COMMUNITY DEVELOPMENT PROJECT FUND; AND AUTHORIZING THE COUNTY JUDGE TO ACT AS THE COUNTY'S CHIEF EXECUTIVE OFFICER AND AUTHORIZED REPRESENTATIVE IN ALL MATTERS PERTAINING TO THE COUNTY'S PARTICIPATION IN THE COMMUNITY DEVELOPMENT PROGRAM.

WHEREAS, the County Commissioners Court of the County of Sabine desires to develop a viable urban community, including decent housing and a suitable living environment and expanding economic opportunities, principally for persons of low/moderate income; and

WHEREAS, certain conditions exist which represent a threat to the public health and safety; and

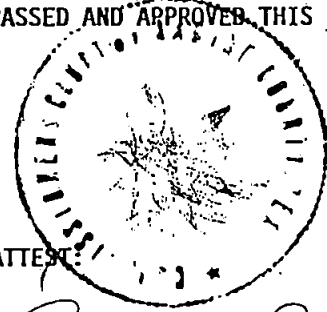
WHEREAS, it is necessary and in the best interest of the County of Sabine to apply for funding under the 1994/95 Texas Community Development Program;

NOW, THEREFORE, BE IT RESOLVED BY THE COUNTY COMMISSIONERS COURT OF THE COUNTY OF SABINE, TEXAS:

That a Texas Community Development Program application for the Community Development Fund is hereby authorized to be filed on behalf of the County with the Texas Department of Housing and Community Affairs.

2. That the County's application be placed in competition for funding under the Community Development Fund.
3. That the application be for \$91,470.00 of grant funds to carry out First Time Water Service for the Daniel Community on FM 944.
4. That the County Commissioners Court directs and designates the County Judge as the County's Chief Executive Officer and Authorized Representative to act in all matters in connection with the application and the County's participation in the Texas Community Development Program.
5. That it further be stated that the County of Sabine is committing \$-0- from its Local Fund as a cash contribution toward the project activities of this Water Improvements Project and \$2,500.00 in-kind services.

PASSED AND APPROVED THIS 12<sup>th</sup> DAY OF September, 1994.



John L. Hyden  
JOHN L. HYDEN, COUNTY JUDGE  
COUNTY OF SABINE, TEXAS

ATTEST:  
Jamie McDaniel

Vol 1 Pg 323A

RESOLUTION

A RESOLUTION OF THE COUNTY COMMISSIONERS COURT OF THE COUNTY OF SABINE, TEXAS AUTHORIZING THE SUBMISSION OF A TEXAS COMMUNITY DEVELOPMENT PROGRAM APPLICATION TO THE TEXAS DEPARTMENT OF HOUSING AND COMMUNITY AFFAIRS FOR THE URGENT NEED FUND; AND AUTHORIZING THE COUNTY JUDGE TO ACT AS THE COUNTY'S CHIEF EXECUTIVE OFFICER AND AUTHORIZED REPRESENTATIVE IN ALL MATTERS PERTAINING TO THE COUNTY'S PARTICIPATION IN THE COMMUNITY DEVELOPMENT PROGRAM.

WHEREAS, the County Commissioners Court of the County of Sabine desires to develop a viable urban community, including decent housing and a suitable living environment and expanding economic opportunities, principally for persons of low/moderate income; and

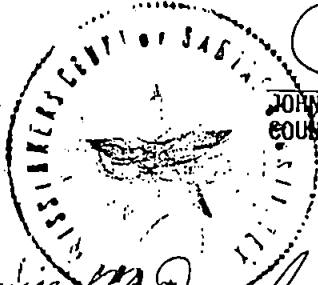
WHEREAS, water wells in the DANIEL COMMUNITY on FM 944 represent a threat to the public health and safety; and

WHEREAS, it is necessary and in the best interest of the County of Sabine to apply for Urgent Need funding under the Texas Community Development Program;

NOW, THEREFORE, BE IT RESOLVED BY THE COUNTY COMMISSIONERS COURT OF THE COUNTY OF SABINE, TEXAS:

1. That a Texas Community Development Program application for the Urgent Need Fund is hereby authorized to be filed on behalf of the County with the Texas Department of Housing and Community Affairs.
2. That the application be for \$91,470.00 of grant funds to carry out First Time Water Service to the Daniel Community on FM 944.
3. That the County Commissioners Court directs and designates the County Judge as the County's Chief Executive Officer and Authorized Representative to act in all matters in connection with the application and the County's participation in the Texas Community Development Program.
4. That it further be stated that the County of Sabine is committing \$-0- from its Local Fund as a cash contribution toward the project activities of this Water Improvements Project and \$2,500.00 in-kind services.

PASSED AND APPROVED THIS 12th DAY OF September, 1994.



*John L. Hyden*  
JOHN L. HYDEN, COUNTY JUDGE  
COUNTY OF SABINE, TEXAS

ATTEST:

*Janice McDaniel*

THE STATE OF TEXAS  
COUNTY OF SABINE  
I HEREBY CERTIFY THAT THESE DOCUMENTS WERE FILED AND  
DULY RECORDED IN THE COMMISSIONERS COURT MINUTES OF SABINE  
COUNTY, TEXAS.



VOL. Y PAGE 371A  
Janice McDaniel County clerk  
by *Laurel Clark*  
DEPUTY

Vol. Y Pg. 374A



SABINE COUNTY GENERAL FUND  
 ACCOUNTS PAYABLE LEDGER  
 09-09-94

090994  
 Page 1

Entry	Date	Description	Account R	Document	Stat	Due	Amount	
		(AIMM)	ADDRESS INFORMATION MANAGEMENT					
168	09-09-94	ATLAS *GIS SOFTWARE	6480.6690	1215		0	1,595.00	
169	09-09-94	IMPORT/EXPORT	6480.6690	1215		0	495.00	
170	09-09-94	TRAINING	6480.6690	1215		0	1,100.00	
Total							\$3,190.00	

		(BRAD)	WILLIAM G. BRADBERRY SR.					
74	09-08-94	SCHOOL REGISTRATIONS	6470.5600	PETTY		-1	20.00	
75	09-08-94	GASOLINE REIMBURSED	6335.5600	PETTY		-1	36.00	
76	09-08-94	MEALS REIMBURSED	6425.5600	PETTY		-1	41.89	
Total							\$97.89	

		(BROK)	BROOKSHIRE BROTHERS, INC					
1	09-08-94	DONUTS AND CANDY	6310.4000	300898		-1	11.40	
135	09-08-94	GROCERIES	6542.5600	294419		-1	40.50	
136	09-08-94	BRAWNY,LAWN BAG,ETC	6313.5600	294419		-1	28.81	
137	09-08-94	MILK,CHEESE,BREAD	6542.5600	294418		-1	17.34	
138	09-08-94	MAXI PADS & GELCAPS	6543.5600	294423		-1	6.58	
139	09-08-94	GROCERIES	6542.5600	294435		-1	66.44	
140	09-08-94	BATH TISSUE, TOWELS	6313.5600	294435		-1	7.50	
141	09-08-94	PEPTO BISMOL	6543.5600	294441		-1	4.49	
142	09-08-94	WHEEL BRUSH	6313.5600	294441		-1	2.99	
143	09-08-94	GROCERIES	6542.5600	294304		-1	48.77	
144	09-08-94	AMMONA,CLOROX,TOWELS	6313.5600	294304		-1	24.02	
145	09-08-94	ASP GELCAPS	6543.5600	294311		-1	3.99	
146	09-08-94	GROCERIES	6542.5600	294316		-1	64.05	
147	09-08-94	JANITORIAL SUPPLIES	6313.5600	294316		-1	28.23	
148	09-08-94	GROCERIES	6542.5600	294335		-1	65.91	
149	09-08-94	TISSUE & TOWELS	6313.5600	294335		-1	13.26	
150	09-08-94	ROLAIDS	6313.5600	294335		-1	2.35	
151	09-08-94	ASPIRIN GELCAPS	6543.5600	294345		-1	7.98	
152	09-08-94	JANITORIAL SUPPLIES	6313.5600	294350		-1	20.42	
153	09-08-94	GROCERIES	6542.5600	294350		-1	58.72	
154	09-08-94	BREAD,MILK,CEREAL	6542.5600	300858		-1	33.98	
155	09-08-94	TOWELS,DETERGENT,CLO	6313.5600	300858		-1	8.63	
156	09-08-94	GROCERIES	6542.5600	300878		-1	53.92	
157	09-08-94	PINE OIL,CLOROX,AMMO	6313.5600	300878		-1	4.06	
158	09-08-94	ASPIRIN GELTABS	6543.5600	300885		-1	10.47	
159	09-08-94	MILK,BREAD,CEREAL	6542.5600	300889		-1	32.86	
160	09-08-94	GROCERIES	6542.5600	300900		-1	39.69	
161	09-08-94	JANITORIAL SUPPLIES	6313.5600	300900		-1	22.77	
162	09-08-94	GROCERIES	6542.5600	301614		-1	43.07	
163	09-08-94	CLOROX & STICK-UPS	6313.5600	301614		-1	5.37	
164	09-08-94	PENS & POLAROID FILM	6310.5600	301623		-1	18.07	
Total							\$796.54	

Vol Y Pg 321

SABINE COUNTY GENERAL FUND  
 ACCOUNTS PAYABLE LEDGER  
 09-09-94

090994  
 Page 2.

Entry	Date	Description	Account R	Document	Stat	Due	Amount	
(BUTP)		BUTLER PAPER						
19	09-08-94	DUST MOP HEADS	6310.4080	06868300		-1	23.68	
20	09-08-94	CASH DISCOUNT	6310.4080	06868300		-1	-0.24	
21	09-08-94	6 GL PURE PINE OIL	6310.4080	06839100		-1	117.78	
Total							\$141.22	
(BWHF)		B & W HARDWARE & FURNITURE						
17	09-08-94	4 FOUR FT. BULBS	6310.4080	100-91		-1	14.00	
18	09-08-94	FOUR BULBS	6310.4080	100-91		-1	14.00	
Total							\$28.00	
(CCLI)		CAPITAL CITY LEASING, INC.						
22	09-08-94	PAUMENT COUNPON R37	6613.4090	M-553		-1	715.33	
126	09-08-94	PAYMENT R12 OF 36	6504.5600	M307AA		-1	827.27	
127	09-08-94	PAYMENT R9 OF 36	6504.5600	M312SAA		-1	877.28	
Total							\$2,419.88	
(CDCA)		COUNTY & DISTRICT CLERKS ASSOC						
6	09-08-94	YEARLY DUES	6470.4030	0		-1	20.00	
44	09-08-94	YEARLY DUES	6470.4500	0		-1	20.00	
Total							\$40.00	
(DAFE)		DANIEL FEATHERSTON J.P.R2 PL 2						
166	09-08-94	ROLL POSTAGE STAMPS	6310.4570	0		-1	29.00	
Total							\$29.00	
(DETR)		D.E.TEX.REG.NARC.TRAFF.TASK FO						
165	09-08-94	CASHMATCH OBLIGATION	6600.5750	1994/95		-1	3,475.00	
Total							\$3,475.00	
(EARL)		R. EARL LORD						
37	09-08-94	MICHAEL HELMER	6531.4350	NO. 5434		-1	125.00	
38	09-08-94	DANNY LEE MOODY	6531.4350	NO. 5360		-1	150.00	
39	09-08-94	JUSTIN BUTLER	6531.4350	NO. 5414		-1	150.00	
40	09-08-94	GEORGE RICKY SMITH	6531.4350	0		-1	150.00	
41	09-08-94	MICHAEL GENE BRAGG	6531.4350	NO 5415		-1	150.00	
171	09-09-94	WILLIAM C. BUCKLEY	6531.4350	NO. 9539		0	300.00	
Total							\$1,025.00	

Vol    Pg 372

SABINE COUNTY GENERAL FUND  
 ACCOUNTS PAYABLE LEDGER  
 09-09-94

090994  
 Page 3

Entry	Date	Description	Account R	Document	Stat	Due	Amount
(EDGA)		EDGAR'S CONOCO					
88	09-08-94	FILTER AND GREASE	6451.5600	5544334		-1	26.00
89	09-08-94	FILTER AND GREASE	6451.5600	5544282		-1	26.00
90	09-08-94	AIR FILTER	6451.5600	5544282		-1	10.95
91	09-08-94	BRAKE FLUID	6451.5600	5544282		-1	1.00
92	09-08-94	FILTER & GREASE	6451.5600	5943453		-1	26.00
93	09-08-94	AIR FILTER	6451.5600	5943453		-1	10.95
Total							\$100.90
(EMEN)		EMBLEM ENTERPRISES					
78	09-08-94	100 U.S. FLAG MED	6540.5600	041726		-1	68.85
Total							\$68.85
(ESSS)		EAST SABINE SENIOR SERVICE					
23	09-08-94	UTILITY CONTRIBUTION	6614.4090	SEPT. 94		-1	100.00
Total							\$100.00
(ETEX)		EASTEX COMMUNICATIONS					
77	09-08-94	TWO NTN4595C	6451.5600	015436		-1	284.00
Total							\$284.00
(GAGA)		GARY H. GATLIN					
42	09-08-94	KEVIN EDGAR	6531.4350	NO 10439		-1	150.00
43	09-08-94	RICKY MITCHELL	6531.4350	NO 10503		-1	150.00
Total							\$300.00
(GALL)		GALL'S INC.					
108	09-08-94	ONE LINE NAME TAG	6540.5600	5949620		-1	8.45
109	09-08-94	RECHARGE BATTERY	6500.5600	5963127		-1	51.90
110	09-08-94	FLASHLIGHT LAMP (20)	6500.5600	5963127		-1	43.90
111	09-08-94	FLASHLIGHT LAMP (35)	6500.5600	5963127		-1	21.90
112	09-08-94	FREIGHT	6500.5600	5963127		-1	8.90
Total							\$135.35
(GATC)		G. A. THOMPSON CO.					
94	09-08-94	ARREST REPORTS	6325.5600	45174		-1	148.70
Total							\$148.70

Vol 11 Pg 373

SABINE COUNTY GENERAL FUND  
 ACCOUNTS PAYABLE LEDGER  
 09-09-94

090994  
 Page 4

Entry	Date	Description	Account R	Document	Stat	Due	Amount
GCTF)							
			GCT FIRE & SAFTY-JASPER				
35	09-08-94	HYDROTEST FIRE HOSE	6450.5600	3070		-1	12.00
36	09-08-94	HOSE RE-RACK	6450.5600	3070		-1	7.50
123	09-08-94	PORTABLE INSPECTIONS	6450.5600	3063		-1	0.00
124	09-08-94	INSPECTION FIRE HOSE	6450.5600	3063		-1	0.00
125	09-08-94	MINIMUM BILLING	6450.5600	3063		-1	25.00
Total							\$44.50
GTEM)							
			GTE MOBILNET				
114	09-08-94	MOBILE PHONE BILL	6420.5600	635-2325		-1	66.12
Total							\$66.12
HART)							
			HART FORMS & GRAPHICS				
3	09-08-94	PROBATE VOL. 34-35	6310.4030	669885		-1	149.32
9	09-08-94	PROBATE DOCKET LEAVE	6310.4030	669972		-1	87.71
10	09-08-94	MARRIAGE REC. VOL RP	6310.4030	669798		-1	120.45
11	09-08-94	PUBLIC RECORD BINDER	6310.4030	669490		-1	198.53
12	09-08-94	RECORDING PAPER R28	6310.4030	669132		-1	180.99
Total							\$737.00
HEIN)							
			HEMPHILL INSURANCE AGENCY				
51	09-08-94	NOTARY BOND	6500.4970	0012		-1	50.00
62	09-08-94	STATE FILING FEE	6500.4970	0012		-1	21.00
Total							\$71.00
HOSP)							
			SABINE COUNTY HOSPITAL				
116	09-08-94	ROBERT POWELL	6543.5600	030614		-1	132.40
117	09-08-94	ROBERT POWELL	6543.5600	030626		-1	144.60
118	09-08-94	ROBERT POWELL	6543.5600	030630		-1	213.95
119	09-08-94	ANGELA ADKINS	6543.5600	030686		-1	313.50
Total							\$804.45
JTDC)							
			JASPER TIRE & DISTRIBUTING CO.				
99	09-08-94	P225/70R15 XP2000 II	6451.5600	12291		-1	187.20
100	09-08-94	TIRE RECYCLE FEE	6451.5600	12291		-1	8.00
101	09-08-94	COMPUTER BALANCE	6451.5600	12291		-1	26.00
102	09-08-94	MOUNT/DISMOUNT	6451.5600	12291		-1	16.00
103	09-08-94	VALVE STEMS	6451.5600	12291		-1	6.00
104	09-08-94	PASSENGER ALIGNMENT	6451.5600	12009		-1	19.95
Total							\$263.15

Vol Y Pg 374

SABINE COUNTY GENERAL FUND  
 ACCOUNTS PAYABLE LEDGER  
 09-09-94

090994  
 Page 5

Entry	Date	Description	Account R	Document	Stat	Due	Amount
(KCDR)		K-C DRUGS R2					
95	09-08-94	ANGELA ADKINS	6543.5600	39452		-1	9.00
96	09-08-94	CHARLES GREER	6543.5600	39459		-1	98.75
97	09-08-94	CHARLES GREER	6543.5600	39232		-1	47.15
98	09-08-94	GERALD THRASH	6543.5600	39343		-1	30.20
Total							\$185.10
(LSLO)		LESLO SALES OF HEMPHILL					
70	09-08-94	8 1X4X12 R2	6480.6690	16863		-1	19.68
71	09-08-94	6 3/4 CD	6480.6690	16863		-1	106.14
72	09-08-94	3 LBS R8 COMMON NAIL	6480.6690	16863		-1	1.65
73	09-08-94	TWO GALLONS PAINT	6480.6690	17658		-1	33.98
Total							\$161.45
(MCII)		MCI TELECOMMUNICATIONS					
63	09-08-94	TELEPHONE BILL	6420.4990	Y0260263		-1	18.75
Total							\$18.75
(MCJA)		JANICE MCDANIEL					
7	09-08-94	CASSETTE HOLDER	6310.4030	0		-1	8.60
Total							\$8.60
(MEMO)		MEMOREX TELEX					
113	09-08-94	TELETYPE	6501.5600	16265141		-1	55.00
Total							\$55.00
(MOCC)		MOTOROLA CREDIT CORPORATION					
128	09-08-94	RADIO COMM EQUIPMENT	6502.5600	20047168		-1	4,012.00
Total							\$4,012.00
(NAPH)		NAPA AUTO PARTS - HEMPHILL					
105	09-08-94	REGAL TOOL	6500.5600	068592		-1	9.9
106	09-08-94	HAND CLEANER	6500.5600	068523		-1	10.8
Total							\$20.7

Vol        Pg 375

SABINE COUNTY GENERAL FUND  
 ACCOUNTS PAYABLE LEDGER  
 09-09-94

090994  
 Page 6

Entry	Date	Description	Account R	Document	Stat	Due	Amount
<b>(POST)</b>							
115	09-08-94	ROLL OF STAMPS	POSTMASTER 6315.5600	0		-1	29.00
Total							\$29.00
<b>(PRPR)</b>							
PRAISES & PROMISES							
13	09-08-94	LETTER/LEGAL PAPER	6310.4030	112960		-1	106.85
54	09-08-94	SIX ROLLS OF TAPE	6310.4990	112974		-1	3.54
59	09-08-94	PRINTER RIBBON	6480.6690	112942		-1	12.99
79	09-08-94	FAX PAPER	6310.5600	112953		-1	35.04
80	09-08-94	FILE FOLDERS	6310.5600	112953		-1	11.90
81	09-08-94	COMPUTER PAPER	6310.5600	81912		-1	37.95
82	09-08-94	FILE FOLDERS	6310.5600	81912		-1	12.95
83	09-08-94	COPY PAPER (TWO)	6310.5600	81912		-1	9.98
84	09-08-94	WEBSTER DICTIONARY	6310.5600	112959		-1	4.95
Total							\$236.15
<b>(RAMC)</b>							
RAY ALLEN MANUFACTURING CO. INC							
129	09-08-94	BAIL OUT	6451.5600	35344D		-1	516.30
130	09-08-94	FINANCE CHARGE	6451.5600	35344D		-1	7.74
Total							\$524.04
<b>(RARE)</b>							
THE RAMBLER/REPORTER							
25	09-08-94	26 INCH DISPLAY AD	6455.4090	3089		-1	85.80
26	09-08-94	212 WORD LEGAL	6455.4090	3089		-1	29.68
27	09-08-94	307 WORD LEGAL	6455.4090	3089		-1	42.98
28	09-08-94	60 INCH DISPLAY AD	6455.4090	3089		-1	198.00
29	09-08-94	235 WORD LEGAL	6455.4090	3089		-1	32.90
30	09-08-94	307 WORD LEGAL	6455.4090	3089		-1	42.98
31	09-08-94	223 WORD LEGAL	6455.4090	3089		-1	31.22
32	09-08-94	160 WORD LEGAL	6455.4090	3089		-1	22.40
33	09-08-94	235 WORD LEGAL	6455.4090	3089		-1	32.90
34	09-08-94	33 INCH DISPLAY AD	6455.4090	3089		-1	108.90
35	09-08-94	223 WORD LEGAL	6455.4090	3089		-1	31.22
36	09-08-94	172 WORD LEGAL	6455.4090	3089		-1	24.08
Total							\$683.06
<b>(RELI)</b>							
THE RELIABLE CORPORATION							
133	09-08-94	9 1/2X11 DATE BINDER	6325.5600	TC569000		-1	15.90
134	09-08-94	HANDLING CHARGE	6325.5600	TC569000		-1	2.99
Total							\$18.89

Vol 4 Pg 376

SABINE COUNTY GENERAL FUND  
 ACCOUNTS PAYABLE LEDGER  
 09-09-94

090994  
 Page 7

Entry	Date	Description	Account R	Document	Stat	Due	Amount	
(ROSU)		ROGERS OFFICE SUPPLY						
2	09-08-94	LEGAL SIZE FOLDERS	6310.4000	7394		-1	5.99	
3	09-08-94	BINDER CLIPS	6310.4000	7394		-1	1.05	
4	09-08-94	TWO LIQUID PAPERS	6310.4000	7394		-1	1.76	
5	09-08-94	5 BLACK UNIBALL PENS	6310.4000	7286		-1	3.60	
14	09-08-94	LIQUID PAPER & PENS	6310.4030	7398		-1	24.19	
56	09-08-94	FIVE RIBBONS	6310.4750	7393		-1	7.45	
57	09-08-94	CORRECTION TAPES (6)	6310.4750	7393		-1	3.79	
58	09-08-94	LEGAL SIZE FOLDERS	6310.4750	7393		-1	11.98	
59	09-08-94	5 LIQUID PAPERS	6310.4750	7393		-1	4.40	
60	09-08-94	RECEIPT BOOK	6310.4750	7393		-1	7.95	
107	09-08-94	FAX PAPER/RIBBON	6325.5600	7499		-1	42.00	
Total							\$114.16	
(SCAD)		SABINE COUNTY APPRAISAL DISTR.						
65	09-08-94	PRO-RATE COST	6542.4990	SEPT. 94		-1	2,169.75	
Total							\$2,169.75	
(SCOT)		SCOTT - MERRIMAN, INC.						
45	09-08-94	POSTING TRAY & INDEX	6310.4500	005087		-1	176.77	
46	09-08-94	JUVENILE DOCKET LEAV	6310.4500	004785		-1	49.50	
47	09-08-94	A-Z INDEX FOR ABOVE	6310.4500	004785		-1	105.50	
48	09-08-94	FREIGHT	6310.4500	004785		-1	10.55	
49	09-08-94	CHILD SUPPORT LEDGER	6310.4500	005086		-1	257.85	
Total							\$600.21	
(TBFE)		TEXAS BANK FORMS & EQUIPMENT						
167	09-09-94	COMPUTER SYSTEM	6480.6690	04341		0	4,965.90	
Total							\$4,965.90	
(TDCA)		TEXAS DIST.& CO. ATTORNEY ASSO						
55	09-08-94	ANNUAL MEMBERSHIP	6470.4750	0		-1	50.00	
Total							\$50.00	
(TJHA)		THOMAS J. HAMILTON						
50	09-08-94	INQUEST/B. THOMAS	6430.4550	0		-1	25.00	
51	09-08-94	INQUEST/E. UPSHAW	6430.4550	0		-1	25.00	
52	09-08-94	INQUEST/L. JACKSON	6430.4550	0		-1	25.00	
53	09-08-94	INQUEST/L. CREECH	6430.4550	0		-1	25.00	
54	09-08-94	INQUEST/M. PARRISH	6430.4550	0		-1	25.00	

SABINE COUNTY GENERAL FUND  
 ACCOUNTS PAYABLE LEDGER  
 09-09-94

090994  
 Page 8

ntry Date Description Account R Document Stat Due Amount

THOMAS J. HAMILTON (CONTINUED)

Total -----  
 \$125.00

(TPCI) TERRILL PETROLEUM CO. INC.  
 6 09-08-94 14.9 GALLON/GASOLINE 6480.6690 29552 -1 12.77  
 7 09-08-94 13.9 GALLON/GASOLINE 6480.6690 29614 -1 11.78  
 8 09-08-94 13.6 GALLON/GASOLINE 6480.6690 29700 -1 10.98  
 Total -----  
 \$35.53

(TSDI) TEXAS STATE DISTRIBUTORS INC.  
 131 09-08-94 HOL PL BLK RH GLOCK 6540.5600 300144 -1 37.01  
 132 09-08-94 FREIGHT 6540.5600 300144 -1 3.95  
 Total -----  
 \$40.96

(WEPC) WEST PUBLISHING CORPORATION  
 15 09-08-94 TX PR V6 6524.4030 73812401 -1 68.00  
 16 09-08-94 TX ST&CD-PENAL 3BKS 6524.4030 73971623 -1 84.00  
 Total -----  
 \$152.00

(WFSJ) WALTER F. STEPHENS, JR., INC.  
 120 09-08-94 25X75X4 MATTRESS 6450.5600 15709 -1 32.85  
 121 09-08-94 SIX MATTRESS COVERS 6450.5600 15709 -1 41.70  
 122 09-08-94 SHIPPING 6450.5600 15709 -1 15.77  
 Total -----  
 \$90.32

(XROX) XEROX CORPORATION  
 24 09-08-94 LEASE AGREEMENT 6500.4090 56476501 -1 182.43  
 87 09-08-94 MAINTENANCE CHARGE 6450.5600 43241023 -1 50.00  
 Total -----  
 \$232.43

Total of Ledger

-----  
 \$28,895.83  
 =====

Vol 1 Pg 328



SIGN HERE FOR PAYMENT APPROVAL

John L. Hyden  
John L. Hyden  
County Judge

SIGN HERE FOR PAYMENT APPROVAL

Janice McDaniel  
Janice McDaniel  
County Clerk

SIGN HERE FOR PAYMENT APPROVAL

Keith C. Clark  
Keith C. Clark  
Commissioner, Pct. 1

SIGN HERE FOR PAYMENT APPROVAL

Lynn Smith  
Lynn Smith  
Commissioner, Pct. 2

SIGN HERE FOR PAYMENT APPROVAL

Carolyn White  
Carolyn White  
Commissioner, Pct. 3

SIGN HERE FOR PAYMENT APPROVAL

Chester D. Cox Sr.  
Chester D. Cox Sr.  
Commissioner, Pct. 4

APPROVED FOR PAYMENT BY SABINE COUNTY COMMISSIONERS COURT SEPT. 12, 1994

Vol 4 Pg 379

SABINE COUNTY ROAD & BRIDGE  
 ACCOUNTS PAYABLE LEDGER  
 09-09-94

090994  
 Page 1

Entry	Date	Description	Account R	Document	Stat	Due	Amount
<b>ANGL)</b>							
ANGLER'S PRINTING							
0	09-08-94	50 HAULING PERMITS	6657.6030	0		-1	5.00
Total							\$5.00
<b>BEEI)</b>							
BOB EVANS EQUIPMENT, INC.							
5	09-08-94	SEAL, BOLTS, NUTS	6357.6030	104519		-1	19.74
Total							\$19.74
<b>BIGT)</b>							
BIG TIN BARN HOME CENTER							
8	09-08-94	12"X20' CORR GULVERT	6370.6030	254633		-1	115.00
9	09-08-94	12" CULVERT BANDS	6370.6030	254817		-1	9.72
Total							\$124.72
<b>BOAZ)</b>							
BOAZ AUTO REPAIR							
2	09-09-94	6 QUARTS OIL & FILT	6355.6030	0		0	17.74
3	09-09-94	U-JPOINT	6355.6030	0		0	14.49
4	09-09-94	OIL & AIR FILTER	6355.6030	0		0	15.54
5	09-09-94	6 QUARTS OIL	6355.6030	0		0	10.14
6	09-09-94	TRANSMISSION FLUID	6355.6030	0		0	3.18
7	09-09-94	GALLON ANTIFREEZE	6355.6030	0		0	5.99
8	09-09-94	THERMOSTAT	6355.6030	0		0	11.62
9	09-09-94	EXHAUST GASKET	6355.6030	0		0	15.18
100	09-09-94	VALVE COVER GASKET	6355.6030	0		0	8.55
101	09-09-94	EXHAUST STUDS	6355.6030	0		0	10.40
102	09-09-94	TWO SPRINGS	6355.6030	0		0	7.20
103	09-09-94	TOTAL LABOR	6433.6030	0		0	209.90
Total							\$329.93
<b>(CCLI)</b>							
CAPITAL CITY LEASING, INC.							
5	09-08-94	PAYMENT R9 OF 60	6653.6010	M401AC		-1	1,841.88
53	09-08-94	PAYMENT R14 OF 60	6653.6040	M309AD		-1	1,413.55
Total							\$3,255.43
<b>(CDCS)</b>							
CHESTER D. COX SR.							
67	09-08-94	TRUCK SEAT	6355.6040	0		-1	100.00
Total							\$100.00

Vol    Pg 380

SABINE COUNTY ROAD & BRIDGE  
 ACCOUNTS PAYABLE LEDGER  
 09-09-94

090994  
 Page 2

Entry	Date	Description	Account R	Document	Stat	Due	Amount
		(ETDI)	E.TEX.DIESEL INJECT & MACHINE				
104	09-09-94	EXH. MAINFOLD	6355.6030	26817		0	37.50
Total							<u>37.50</u>

		(ETMI)	EAST TEXAS MACHINERY, INC.				
14	09-08-94	KIT AND FREIGHT	6356.6020	215713		-1	189.59
78	09-08-94	PARTS AND SUPPLIES	6356.6040	24686		-1	664.52
79	09-08-94	PARTS AND SUPPLIES	6356.6040	25062		-1	173.36
Total							<u>\$1,027.47</u>

		(ETMS)	EAST TEXAS MILL SUPPLY				
7	09-08-94	BATTERY	6355.6010	32732		-1	51.95
17	09-08-94	1000 AMP. BATTERY	6355.6020	32707		-1	82.95
18	09-08-94	ADAPTER FITTING	6355.6020	33005		-1	2.61
19	09-08-94	30/30 SPRING BRAKE	6355.6020	33005		-1	55.00
37	09-08-94	(4) DEXRON II QUART	6342.6030	32697		-1	5.15
38	09-08-94	TWO STARTER FLUIDS	6342.6030	32697		-1	3.00
39	09-08-94	TWO BRAKE FLUIDS	6342.6030	32697		-1	3.00
40	09-08-94	TWO SHOP TOWEL ROLLS	6657.6030	32824		-1	3.75
41	09-08-94	FOUR SHOP TOWEL ROLL	6657.6030	32878		-1	7.50
42	09-08-94	12 DEXRON II QUART	6342.6030	32878		-1	15.50
43	09-08-94	GEAR OIL-5 GALLON	6342.6030	32878		-1	15.90
44	09-08-94	6 BRAKE FLUIDS-12 OZ	6342.6030	32927		-1	9.00
45	09-08-94	MYSTIC HI TEMP GREAS	6342.6030	32927		-1	18.90
46	09-08-94	3/8 CLEVIS GRAB HOOK	6355.6030	32927		-1	6.30
47	09-08-94	HOSE CLAMP	6355.6030	32927		-1	3.00
48	09-08-94	12 SMALL STARTING FL	6342.6030	32927		-1	17.70
49	09-08-94	NEW FORD BATTERY	6355.6030	33174		-1	171.00
50	09-08-94	BATTERY CABLE	6355.6030	33174		-1	14.40
51	09-08-94	BATTERY POST CLEANER	6355.6030	33174		-1	3.30
75	09-08-94	ADAPTER FITTING	6355.6040	94730		-1	1.10
76	09-08-94	2-WIRE HYD HOSE	6355.6040	94730		-1	2.70
77	09-08-94	HOSE END	6355.6040	94730		-1	3.30
Total							<u>\$497.60</u>

		(ETOX)	ETOX, INC. OF JASPER				
8	09-08-94	RENTAL INVOICE	6657.6010	08940209		-1	4.20
71	09-08-94	244 OXYGEN FULL	6657.6040	79746		-1	12.70
72	09-08-94	SMALL SCETYLENE FULL	6657.6040	79746		-1	21.20
73	09-08-94	BRASS 1/8X36 FLUX	6657.6040	79746		-1	47.50
74	09-08-94	GLOVE COMFOFLEX 2000	6657.6040	79746		-1	10.50
Total							<u>\$96.60</u>

Vol. 1 Pg 381

SABINE COUNTY ROAD & BRIDGE  
 ACCOUNTS PAYABLE LEDGER  
 09-09-94

090994  
 Page 3

ntry	Date	Description	Account R	Document	Stat	Due	Amount
		GEOB)		GEO. P. BANE, INC.			
2	09-08-94	EDGE AND FREIGHT	6356.6030	C78671		-1	62.26
Total							\$62.26
		GMWS)		G-M WATER SUPPLY CORP.			
1	09-08-94	WATER BILL	6440.6030	2546		-1	17.59
Total							\$17.59
		GWSC)		GULF WELDING SUPPLY CO.			
0	09-08-94	RENTAL INVOICE	6657.6020	090085		-1	8.00
7	09-08-94	RENTAL INVOICE	6657.6030	090235		-1	8.00
Total							\$16.00
		HMCI)		HEMPHILL MOTOR COMPANY INC.			
1	09-08-94	PARTS	6355.6010	62503		-1	39.78
.2	09-08-94	BOLT AND NUT	6355.6010	62470		-1	6.30
Total							\$46.08
		HPTS)		HEMPHILL TIRE STORE			
26	09-08-94	ONE FLAT	6365.6020	0040659		-1	5.00
31	09-08-94	ONE FLAT	6365.6030	0041159		-1	15.00
38	09-08-94	11R245 HWY ROLL	6365.6040	0041229		-1	255.13
39	09-08-94	TUBE AND FLAT	6365.6040	0041249		-1	24.95
Total							\$300.08
		(ISBS)		INTERSTATE BILLING SERVICE			
13	09-08-94	SEAT	6355.6010	J35235		-1	300.29
Total							\$300.29
		(JTDC)		JASPER TIRE & DISTRIBUTING CO.			
21	09-08-94	FOUR LOW-BOY TIRES	6366.6020	11482		-1	530.60
22	09-08-94	TIRE RECYCLE FEE	6366.6020	11482		-1	14.00
23	09-08-94	FOUR INDUSTRIAL TUBE	6366.6020	11482		-1	55.80
24	09-08-94	11LX15 RIB IMP 8D	6366.6020	12438		-1	82.95
25	09-08-94	11LX15/16 FARM TUBE	6366.6020	12438		-1	11.95
Total							\$695.30

Vol        Pg 382

SABINE COUNTY ROAD & BRIDGE  
 ACCOUNTS PAYABLE LEDGER  
 09-09-94

090994  
 Page 4

Entry	Date	Description	Account R	Document	Stat	Due	Amount
(LCCO)		LUFKIN CREOSOTING COMPANY					
108	09-09-94	6X16 26FT. CREO LUMB	6375.6040	3888		0	728.00
109	09-09-94	3X12 16FT CREO LUMB	6375.6040	3888		0	1,123.20
110	09-09-94	3X8 20FT CREO LUMBER	6375.6040	3888		0	152.00
111	09-09-94	3X8 16FT CREO LUMBER	6375.6040	3888		0	172.80
Total							\$2,176.00
(LESH)		LESLO SALES OF HEMPHILL					
6	09-08-94	24X20 CULVERT	6370.6010	16471		-1	212.57
32	09-08-94	12"X24' CULVERT	6370.6030	15794		-1	159.95
33	09-08-94	15"X24' CULVERT	6370.6030	15828		-1	159.95
70	09-08-94	GAL MURIATIC ACID	6357.6040	15160		-1	2.99
Total							\$535.46
(LPSI)		LEHMAN'S PIPE & STEEL, INC.					
87	09-08-94	40' 3/16X1 1/2 FLAT	6375.6040	102897		-1	12.00
88	09-08-94	20' 1/4X8 FLAT	6375.6040	102897		-1	36.60
Total							\$48.60
(MTEC)		MUSTANG TRACTOR & EQUIPMENT CO					
90	09-08-94	CUTTING EDGE	6356.6040	C270652		-1	573.00
Total							\$573.00
(NAPH)		NAPA AUTO PARTS - HEMPHILL					
9	09-08-94	DISC SET	6355.6010	068772		-1	107.71
54	09-08-94	TWO SCREW DRIVERS	6357.6040	068355		-1	15.11
55	09-08-94	HEATER HOSE	6357.6040	068355		-1	1.00
56	09-08-94	AIR FILTERS	6357.6040	068495		-1	127.21
57	09-08-94	WIRE SET	6357.6040	068495		-1	34.21
58	09-08-94	SPARK PLUG	6357.6040	068495		-1	9.51
59	09-08-94	SHOPTOWEL/HANDCLEAN	6657.6040	068618		-1	30.21
60	09-08-94	GR HOSE & FITTING	6357.6040	068621		-1	5.11
61	09-08-94	WINDSHIELD WIPER REF	6657.6040	068689		-1	10.81
62	09-08-94	AIR FILTERS	6357.6040	069319		-1	291.31
63	09-08-94	CONNECTORS	6357.6040	069319		-1	8.61
64	09-08-94	STOPLITE AND V BELT	6357.6040	069490		-1	23.21
65	09-08-94	NUTS AND SCREWS	6357.6040	069634		-1	14.51
66	09-08-94	BATTERY ACID	6357.6040	069634		-1	4.51
Total							\$683.61

SABINE COUNTY ROAD & BRIDGE  
 ACCOUNTS PAYABLE LEDGER  
 09-09-94

090994  
 Page 5

ntry	Date	Description	Account R	Document	Stat	Due	Amount
		NAPA AUTO PARTS - PINELAND					
16	09-08-94	V BELT	6355.6030	017300		-1	17.38
19	09-08-94	FOUR BATTERIES	6355.6040	017987		-1	291.80
Total							\$309.18
		NECHES COMMUNICATION, INC.					
.05	09-09-94	1.5 HOURS LABOR	6652.6030	5266		0	75.00
.06	09-09-94	60 MILES @ .50 EACH	6652.6030	5266		0	30.00
.07	09-09-94	1 HOUR TRAVEL	6652.6030	5266		0	40.00
Total							\$145.00
		QUADE'S AUTO SUPPLY					
3	09-08-94	EMERY CLOTH	6657.6010	04582		-1	2.18
4	09-08-94	BRK. FILTER	6355.6010	04582		-1	4.95
Total							\$7.13
		RUFUS LUMMUS					
10	09-08-94	GREASE GUN	6343.6010	0		-1	18.00
Total							\$18.00
		TERRILL PETROLEUM					
1	09-08-94	995 GALLONS/GASOLINE	6335.6010	29660		-1	842.76
2	09-08-94	1015 GALLONS/DIESEL	6336.6010	29660		-1	801.85
15	09-08-94	900 GALLONS/DIESEL	6336.6020	29574		-1	717.30
34	09-08-94	DIESEL FUEL	6336.6030	29636		-1	980.37
80	09-08-94	363 GALLONS/DIESEL	6336.6040	29419		-1	301.83
81	09-08-94	20.8 GALLONS/GAS	6335.6040	29419		-1	18.65
82	09-08-94	36 GALLONS/GASOLINE	6335.6040	29454		-1	32.65
83	09-08-94	48 GALLONS/GASOLINE	6335.6040	29497		-1	43.29
84	09-08-94	46 GALLONS/GASOLINE	6335.6040	29606		-1	38.97
85	09-08-94	38 GALLONS/GASOLINE	6335.6040	29669		-1	32.18
86	09-08-94	495.5 GALLONS/DIESEL	6336.6040	29682		-1	383.52
Total							\$4,193.37
Total of Ledger							\$15,621.30

Vol    Pg 384

SIGN HERE FOR PAYMENT APPROVAL

John L. Hyden

John L. Hyden  
County Judge

SIGN HERE FOR PAYMENT APPROVAL

Janice McDaniel

Janice McDaniel  
County Clerk

SIGN HERE FOR PAYMENT APPROVAL

Keith C. Clark

Keith C. Clark  
Commissioner, Pct. 1.

SIGN HERE FOR PAYMENT APPROVAL

Lynn Smith

Lynn Smith  
Commissioner, Pct. 2

SIGN HERE FOR PAYMENT APPROVAL

Carolyn White

Carolyn White  
Commissioner, Pct. 3

SIGN HERE FOR PAYMENT APPROVAL

Chester D. Cox Sr.

Chester D. Cox Sr.  
Commissioner, Pct. 4

APPROVED FOR PAYMENT BY SABINE COUNTY COMMISSIONERS COURT SEPT. 12, 1994

Vol        Pg 385

8

SABINE COUNTY R & B SPECIAL  
 ACCOUNTS PAYABLE LEDGER  
 09-07-94

090794  
 Page 1

Entry	Date	Description	Account R	Document	Stat	Due	Amount
HVEC)							
		HI-WAY EQUIPMENT CO					
	09-07-94	5 HOURS AT \$45	605.6450	101765		0	225.00
	09-07-94	4 HOURS AT \$67.50	605.6450	101765		0	270.00
	09-07-94	SERVICE KIT	605.6355	101765		0	9.90
	09-07-94	414 MILES @ .70 MILE	605.6355	101765		0	289.80
Total							\$794.70

Total of Ledger

\$794.70

SIGN HERE FOR PAYMENT APPROVAL

John L. Hyden  
 John L. Hyden  
 County Judge

SIGN HERE FOR PAYMENT APPROVAL

Janice McDaniel  
 Janice McDaniel  
 County Clerk

SIGN HERE FOR PAYMENT APPROVAL

Keith C. Clark  
 Keith C. Clark  
 Commissioner, Pct. 1

SIGN HERE FOR PAYMENT APPROVAL

Lynn Smith  
 Lynn Smith  
 Commissioner, Pct. 2

SIGN HERE FOR PAYMENT APPROVAL

Carolyn White  
 Carolyn White  
 Commissioner, Pct. 3

SIGN HERE FOR PAYMENT APPROVAL

Chester D. Cox Sr.  
 Chester D. Cox Sr.  
 Commissioner, Pct. 4

APPROVED FOR PAYMENT BY SABINE COUNTY COMMISSIONERS COURT SEPTEMBER 12, 1994

Vol Y Pg 386



SABINE COUNTY R&B SPECIAL III  
 ACCOUNTS PAYABLE LEDGER  
 09-09-94

090994  
 Page 1

Entry	Date	Description	Account R	Document	Stat	Due	Amount
		(BWHF)	B AND W HARDWARE & FURNITURE				
15	09-07-94	TWO GALV. NIPPLES	607.6357	160-153	-2		5.30
16	09-07-94	TELFON TAPE	607.6357	160-153	-2		0.79
17	09-07-94	3/4 COUPLER	607.6357	160-153	-2		1.30
18	09-07-94	RETURNED 8" NIPPLE	607.6357	160-153	-2		-1.04
Total							\$6.35
		(ETMS)	EAST TEXAS MILL SUPPLY				
19	09-07-94	HOSE END	607.6357	32660	-2		9.22
20	09-07-94	4-WIRE HOSE	607.6357	32655	-2		24.42
21	09-07-94	TWO HOSE ENDS	607.6357	32655	-2		45.18
22	09-07-94	TWO HOSE ENDS	607.6357	32724	-2		45.18
23	09-07-94	4-WIRE HOSE	607.6357	32724	-2		24.42
24	09-07-94	HOSE END	607.6357	32577	-2		11.94
Total							\$160.36
		(GEOB)	GEO P. BANE, INC.				
25	09-07-94	AIR FILTER	607.6357	C78589	-2		48.51
26	09-07-94	FREIGHT	607.6357	C78589	-2		12.09
Total							\$60.60
		(HHPS)	H & H PIPE & STEEL				
12	09-07-94	ONE 4X10 1/4" PIPE	607.6657	43203	-2		81.68
Total							\$81.68
		(NAPH)	NAPA AUTO PARTS				
5	09-07-94	FLASHER	607.6357	069311	-2		2.61
6	09-07-94	V BETL	607.6357	069720	-2		8.51
7	09-07-94	CLAMP, WASHER, BATCAB	607.6357	069771	-2		12.72
8	09-07-94	SCREW 50 AND V BELT	607.6357	069076	-2		14.94
9	09-07-94	V BELT	607.6357	0169781	-2		13.20
Total							\$51.98
		(PWTI)	PINEY WOODS TRACTOR & IMP, INC				
10	09-07-94	TOTAL LABOR	607.6346	S00001	-2		576.00
11	09-07-94	PARTS & EQUIPMENT	607.6357	S00001	-2		2,717.93
Total							\$3,293.93

Vol 1 Pg 387

SABINE COUNTY R&B SPECIAL III  
 ACCOUNTS PAYABLE LEDGER  
 09-09-94

090994  
 Page 2

Dr	Date	Description	Account R	Document	Stat	Due	Amount
		TERRILL PETROLEUM CO., INC.					
	09-07-94	873 GALLONS/DIESEL	607.6335	29560		-2	695.78
	09-07-94	1/55 RANDO 68	607.6341	29585		-2	165.00
	Total						----- \$860.78

Total of Ledger

-----  
 \$4,515.68  
 =====

SIGN HERE FOR PAYMENT APPROVAL

John L. Hyden  
 John L. Hyden  
 County Judge

SIGN HERE FOR PAYMENT APPROVAL

Janice McDaniel  
 Janice McDaniel  
 County Clerk

SIGN HERE FOR PAYMENT APPROVAL

Keith C. Clark  
 Keith C. Clark  
 Commissioner, Pct. 1

SIGN HERE FOR PAYMENT APPROVAL

Lynn Smith  
 Lynn Smith  
 Commissioner, Pct. 2

SIGN HERE FOR PAYMENT APPROVAL

Carolyn White  
 Carolyn White  
 Commissioner, Pct. 3

SIGN HERE FOR PAYMENT APPROVAL

Chester D. Cox Sr.  
 Chester D. Cox Sr.  
 Commissioner, Pct. 4

APPROVED FOR PAYMENT BY SABINE COUNTY COMMISSIONERS COURT SEPT. 12, 1994

Vol 1 Pg 388

SABINE COUNTY PR BOND PROGRAM  
 ACCOUNTS PAYABLE LEDGER  
 09-08-94

090894  
 Page 1

Entry	Date	Description	Account R	Document	Stat	Due	Amount	
<b>(HOWC)</b>								
			H.O.W. CENTER, INC.					
1	09-07-94	PAUL PARKS	6400.6700	0		-1	458.58	
2	09-07-94	TOMMIE FREEMAN	6400.6700	0		-1	458.58	
Total							-----	\$917.16
<b>(LAMA)</b>								
			LAND MANOR					
3	09-08-94	ELISA M. FERGUSON	6400.6700	0		0	1,023.00	
Total							-----	\$1,023.00
Total of Ledger							-----	\$1,940.16
							=====	

SIGN HERE FOR PAYMENT APPROVAL

*John L. Hyden*  
 John L. Hyden  
 County Judge

SIGN HERE FOR PAYMENT APPROVAL

*Janice McDaniel*  
 Janice McDaniel  
 County Clerk

SIGN HERE FOR PAYMENT APPROVAL

*Keith C. Clark*  
 Keith C. Clark  
 Commissioner, Pct. 1

SIGN HERE FOR PAYMENT APPROVAL

*Lynn Smith*  
 Lynn Smith  
 Commissioner, Pct. 2

SIGN HERE FOR PAYMENT APPROVAL

*Carolyn White*  
 Carolyn White  
 Commissioner, Pct. 3

SIGN HERE FOR PAYMENT APPROVAL

*Chester D. Cox Sr.*  
 Chester D. Cox Sr.  
 Commissioner, Pct. 4

APPROVED FOR PAYMENT BY SABINE COUNTY COMMISSIONERS COURT SEPTEMBER 12, 1994

SABINE CO. ANTICIPATION NOTES  
 ACCOUNTS PAYABLE LEDGER  
 09-09-94

090994  
 Page 1

Entry	Date	Description	Account R	Document	Stat	Due	Amount
BHNS) BICKERSTAFF, HEATH & SMILEY							
3	09-08-94	BOND COUNSEL	6300.6000	001628		-1	4,000.00
3	09-08-94	EXAMINATION FEE	6300.6000	001628		-1	500.00
3	09-08-94	COPYING CHARGES	6300.6000	001628		-1	317.20
1	09-08-94	FAX CHARGES	6300.6000	001628		-1	34.00
2	09-08-94	OVERNIGHT DELIVERY	6300.6000	001628		-1	91.50
3	09-08-94	TELEPHONE CHARGES	6300.6000	001628		-1	2.28
4	09-08-94	POSTAGE & PARKING	6300.6000	001628		-1	23.06
5	09-08-94	COURIER CHARGES	6300.6000	001628		-1	35.00
5	09-08-94	TRAVEL EXPENSE	6300.6000	001628		-1	245.59
7	09-08-94	LESS CREDIT	6300.6000	001628		-1	-248.63
Total							\$5,000.00
BIGT) BIG TIN BARN, INC.							
3	09-08-94	12 R3 1X4-14' S4SSYP	6300.6000	255880		-1	23.40
9	09-08-94	18 2X4-18 R2 YP S4S	6300.6000	254190		-1	124.02
0	09-08-94	24 LIQUID NAIL	6300.6000	254988		-1	30.96
1	09-08-94	GALVANIZED DRYWALL	6300.6000	254988		-1	17.46
2	09-08-94	60 R3 1X4-14' S4SSYP	6300.6000	254988		-1	117.00
3	09-08-94	ADJUSTMENT	6300.6000	254988		-1	-16.55
Total							\$296.29
BWHF) B & W HARDWARE							
4	09-08-94	6-300 WATT BULBS	6300.6000	100-91		-1	23.96
5	09-08-94	1-6 1/2" BLADE	6300.6000	100-91		-1	12.95
6	09-08-94	17 POUNDS NAILS	6300.6000	100-91		-1	9.35
7	09-08-94	2 1/2 LBS NAILS	6300.6000	100-91		-1	1.38
Total							\$47.64
LESH) LESLO SALES OF HEMPHILL							
1	09-08-94	100 1/2 SHEETROCK	6300.6000	16097		-1	400.00
2	09-08-94	GALLON OF PAINT	6300.6000	16759		-1	18.99
3	09-08-94	SPECKELING	6300.6000	16759		-1	1.79
4	09-08-94	CREDIT/STAPLE GUN	6300.6000	17144		-1	-23.75
5	09-08-94	CREDIT/BOX STAPLES	6300.6000	17144		-1	-2.65
6	09-08-94	KNIFE AND STAPLES	6300.6000	17133		-1	6.34
7	09-08-94	STAPLE GUN	6300.6000	17133		-1	23.75
8	09-08-94	KNIFE	6300.6000	17145		-1	3.69
9	09-08-94	BOX OF MUD & 2-TAPES	6300.6000	17673		-1	8.57
10	09-08-94	30 PIECES/SHEETROCK	6300.6000	17675		-1	128.70
11	09-08-94	FOUR DRYWALL TAPES	6300.6000	17675		-1	6.76
12	09-08-94	4 BOXES JOINT COMP.	6300.6000	17675		-1	20.76
13	09-08-94	DIFFERENCE/SHEETROCK	6300.6000	17677		-1	-8.70
Total							\$584.25

Vol     Pg 390

SABINE CO. ANTICIPATION NOTES  
 ACCOUNTS PAYABLE LEDGER  
 09-09-94

090994  
 Page 2

Entry	Date	Description	Account R	Document	Stat	Due	Amount
(MMSW)							
		MATTERSON MORELAND SAUER					
14	09-08-94	TRAVEL EXPENSE	6300.6000	0		-1	525.00
15	09-08-94	PHOTOCOPYING	6300.6000	0		-1	200.00
16	09-08-94	MESSENGER SERVICE	6300.6000	0		-1	150.00
17	09-08-94	FINANCIAL ADVISORY	6300.6000	0		-1	4,125.00
Total							\$5,000.00

Total of Ledger

\$10,928.18

SIGN HERE FOR PAYMENT APPROVAL

John L. Hyden  
 John L. Hyden  
 County Judge

SIGN HERE FOR PAYMENT APPROVAL

Janice McDaniel  
 Janice McDaniel  
 County Clerk

SIGN HERE FOR PAYMENT APPROVAL

Keith C. Clark  
 Keith C. Clark  
 Commissioner, Pct. 1

SIGN HERE FOR PAYMENT APPROVAL

Lynn Smith  
 Lynn Smith  
 Commissioner, Pct. 2

SIGN HERE FOR PAYMENT APPROVAL

Carolyn White  
 Carolyn White  
 Commissioner, Pct. 3

SIGN HERE FOR PAYMENT APPROVAL

Chester D. Cox Sr.  
 Chester D. Cox Sr.  
 Commissioner, Pct. 4

APPROVED FOR PAYMENT BY SABINE COUNTY COMMISSIONERS COURT SEPTEMBER 12, 1994

THE STATE OF TEXAS  
 COUNTY OF SABINE  
 I HEREBY CERTIFY THAT THESE DOCUMENTS WERE FILED AND  
 ONLY RECORDED IN THE COMMISSIONERS COURT MINUTES OF SABINE  
 COUNTY, TEXAS.



VOL. 391 PAGE 391  
 Janice McDaniel County clerk  
 by Janice Clark  
 DEPUTY

Vol 391 Pg 391