

May 23, 1997, the Sabine County Commissioners' Court met in regular session. The following members were present:

Jack Leath	County Judge
Keith Clark	Commissioner Pct. #1
Lynn Smith	Commissioner Pct. #2
Doyle Dickerson	Commissioner Pct. #3
Will Smith, Sr.	Commissioner Pct. #4
Janice McDaniel	County Clerk

This meeting was rescheduled from May 26, 1997 to May 23, 1997 because of the holiday. Judge Leath called the meeting to order and Bro. Clarence Howell led the Court in prayer. Agenda item #5-Herman Bragg--Reedy Road Name Change

Herman W. Bragg, grandson of Herman Bragg, read a written statement and gave handouts to the Court in support of the request to change the name of Reedy Road to Shacklefoot Road.

Bob Russell, chairman of the 911 Advisory Committee, told the Court that the Committee has set guidelines to use historical names as much as possible in naming the County roads for 911. It is the job of the Committee to bring the proposed road names before the Court. He said that he read the article and it does appear to have historical significance and Mr. Bragg has documented support for this name change.

Judge Leath said that these road names were just adopted at the last Court meeting, but that he doesn't think that the sign has been made for this road yet. We do not need to start changing names after they have been adopted. Judge Leath said that Mr. Bragg said that he did not see the ad in the paper until after it was scheduled for adoption. He said that he is history minded and would go along with the Court if they decided to change this name.

Judge Leath moved to change the road name from Redie Road to Shacklefoot. Commissioner Lynn Smith seconded. All voted for. Motion carried. See attached exhibits.

Agenda item #12-Marvin Powell--Subdivision Name Change

Marvin Powell is requesting that the road in his subdivision that has always been known as Powell Lane remain the same and not changed to Sierra Point.

The Court told Mr. Powell that this road name has not been adopted yet. He needs to submit his request to the 911 Advisory Committee. No action taken on this item.

Agenda item #2-County Maintained Road Mileage

The Court said this item can be better done when the 911 mapping is done. No action taken.

Agenda item #3- 911 - Phase II - Road Names

Gregg Malone presented an aerial map showing structures and a proposed Phase II map. The Phase II map will be ready for viewing by the public sometime in June with a public hearing for adoption possibly July 14, 1997.

Agenda item #1-General Business

Commissioner Clark moved to approve the minutes as written for the May 12 regular Court session and the May 12 special called session of Court. Commissioner Dickerson seconded. All

voted for. Motion carried.

Agenda item #7-Courthouse Amendment

Judge Leath told the Court that Tina Walker, representative for TXDOT (Texas Department of Transportation), along with other TXDOT people, recommends that the County ask Jerry Hill to take a back seat and Kim Williams with the Williams Company be the primary architect. He said that he is informing the Court to let them know that he is signing the contract with Ken Williams. It is basically the same agreement we had with Jerry Hill. Also, an agreement with TXDOT for us to handle the bid process for the Courthouse restoration rather than TXDOT doing it. Judge Leath said that this is to just inform the Court.

Amendment Agenda item #1-Health Insurance

Three bids were received. One from Security Life Insurance (Core), one from Lamar Life Insurance Company. These two are represented by Bill Vrooman. The third bid is from Blue Cross/Blue Shield through the Texas Association of Counties. Blue Cross/Blue Shield is the present carrier for the County.

Commissioner Lynn Smith said that because of his son-in-law being the representative for Blue Cross/Blue Shield, he is abstaining from any participation in accepting a health insurance carrier.

Mr. Vrooman told the Court that Lamar Life will accept Dwight McDaniel (Cobra) with a 5% rate increase.

Judge Leath said that Security Life Insurance (Core) is out of the picture and that we are looking at Lamar Life and Blue Cross/Blue Shield.

The employee rates for both companies with a \$500.00 deductible, preventive care, \$15,000.00 life insurance is as follows:

Lamar Life----\$255.49

Blue Cross/Blue Shield----\$233.91

Court recessed at 10:05 a.m.

Court reconvened at 10:15 a.m.

Commissioner Will Smith moved to stay with Blue Cross/Blue Shield at the new rates. Judge Leath seconded. All voted for. Motion carried. These rates will be in effect from July 1, 1997 through October 1, 1998. See attached copies.

Agenda item #8-Del Logo--Conference Gift

No action.

Agenda item #9-Litter Control

No action.

Agenda item #10-Executive Session

Delete.

Agenda item #11-Reports

Commissioner Clark moved to approve reports from the Tax Assessor, County Ext. Agents, John Toner and Charlotte Gorman, and a financial report. Commissioner Dickerson seconded. All voted for. Motion carried.

Agenda item #4-Solicit Bids--Fuel (Diesel & Gasoline)

Commissioner Lynn Smith moved to advertise for bids in the local newspaper for our fuel needs for the next two years. Commissioner Clark seconded. All voted for. Motion carried. Bids

are to be received by 8:30 a.m., June 23 and will be opened during the regular session of Court June 23.

Agenda item #6-Gradall Repairs

The Court decided that all Commissioners should be made aware of any major repairs needed to be done on the gradall before they are made.

Agenda item #13-Pay Accounts and Salaries

Commissioner Will Smith moved to pay accounts and salaries. Commissioner Clark seconded. All voted for. Motion carried.

Jana Lehman was allowed by the Court to speak on the recent problem with the water.

Ms. Lehman told the Court that the problem with the water happened Thursday and notice was not given until the following Monday. Even then, some people were not notified. The County needs some kind of public notification. The public needs to be protected.

The Court agreed and Judge Leath said that he will check with the Health Department and see what procedures they follow.

Commissioner Will Smith moved to adjourn. Commissioner Clark seconded. Meeting adjourned.

Jack Leath COUNTY JUDGE
Keith C. Clark COMMISSIONER PCT. #1
Will Smith COMMISSIONER PCT. #2
Doug Dickerson COMMISSIONER PCT. #3
W. [Signature] COMMISSIONER PCT. #4

ATTEST:

Janice McDaniel COUNTY CLERK



SABINE COUNTY GENERAL FUND
 ACCOUNTS PAYABLE LEDGER
 05-22-97

052297
 Page 1

Entry	Date	Description	Account R	Document	Stat	Due	Amount
(ANGL)		ANGLER'S PRINTING & PUBLISHING					
36	05-15-97	6 PADS STATEMENTS	6325.4030	0		-7	22.50
Total							\$22.50
(BOSA)		BOGEL SALES, INC.					
38	05-15-97	CASE GLASS CLEANER	6310.4080	123528		-7	28.75
39	05-15-97	CASE CARPET DEODORAN	6310.4080	123528		-7	66.00
40	05-15-97	CASE 2 PLY JRT ROLL	6310.4080	123501		-7	44.95
41	05-15-97	CASE KITCHEN TOWELS	6310.4080	123501		-7	22.00
42	05-15-97	CASE ROLL TOWEL NAT	6310.4080	123501		-7	22.10
43	05-15-97	2 CASES TRASH LINERS	6310.4080	123501		-7	39.00
Total							\$222.80
(BROK)		BROOKSHIRE BROTHERS, INC.					
1	04-26-97	MILK, SUGAR, BREAD	6542.5600	691724		-26	13.47
2	04-29-97	CHEESE, EGGS, MILK	6542.5600	687306		-23	30.38
3	05-04-97	BREAD, MILK, SALT	6542.5600	687321		-18	9.42
4	05-05-97	ASPIRIN, SHAVER	6543.5600	691747		-17	5.68
5	05-05-97	GROUND BEEF, BREAD	6543.5600	691747		-17	13.28
6	05-09-97	CHEESE, MILK, PEPPER	6543.5600	687336		-13	26.10
7	05-10-97	BATTERIES, FILM	6500.5600	687338		-12	31.47
Total							\$129.80
(CABC)		CAVENDER'S BOOT CITY					
22	05-21-97	13 WRANGLER PANTS	6540.5600	1605		-1	259.87
23	05-21-97	2 WRANGLER PANTS	6540.5600	1605		-1	49.98
Total							\$309.85
(CCLI)		CAPITAL CITY LEASING, INC.					
1	05-21-97	PAYMENT R18 OF 60	6502.5600	M511AD		-1	1,191.30
55	05-21-97	PAYMENT R18 OF 60	6502.4500	M511AD		-1	661.83
62	05-21-97	PAYMENT R18 OF 60	6502.4550	M511AD		-1	397.10
63	05-21-97	PAYMENT R18 OF 60	6502.4570	M511AD		-1	397.10
Total							\$2,647.33
(CWPA)		COMPUTER WHOLESALE PRODUCTS					
65	05-08-97	50 RIBBONS	6310.4990	22539		-14	94.00
66	05-08-97	FREIGHT	6310.4990	22539		-14	7.75
Total							\$101.75

Vol CC Pg 124

SABINE COUNTY GENERAL FUND
 ACCOUNTS PAYABLE LEDGER
 05-22-97

052297
 Page 2

Entry	Date	Description	Account R	Document	Stat	Due	Amount
(DONS)		DON'S SALVAGE & OILFIELD SERV					
11	05-13-97	2 REAR DISC ASSEMBLY	6451.5600	UNIT R65		-9	125.32
12	05-13-97	2 FRONT DISC ASSEMBL	6451.5600	UNIT R65		-9	136.06
13	05-13-97	FRONT DISC PADDS	6451.5600	UNIT R65		-9	54.15
14	05-13-97	REAR DISC PADS	6451.5600	UNIT R65		-9	43.38
15	05-13-97	OIL FILTER	6335.5600	UNIT R65		-9	7.90
16	05-13-97	SIX QUARTS OIL	6335.5600	UNIT R65		-9	10.50
17	05-13-97	STUD AND NUT	6451.5600	UNIT R65		-9	3.98
18	05-13-97	REPAIR ROTORS & PADS	6451.5600	UNIT R65		-9	78.00
Total							\$459.29
(ETCO)		EASTEX COMMUNICATIONS					
8	05-02-97	CCD CAMERA	6480.5600	026102		-20	245.00
9	05-02-97	REPLACE CCD CAMERA	6480.5600	026102		-20	60.00
Total							\$305.00
(FAFR)		FAT FRED'S					
69	05-11-97	BAG OF ICE	6106.4350	20478		-11	1.00
70	05-10-97	BAG OF ICE, CUPS	6106.4350	17371		-12	2.95
71	05-08-97	BAG OF ICE	6106.4350	17297		-14	1.00
72	05-03-97	BAG OF ICE, CUPS	6106.4350	21287		-19	2.95
73	05-01-97	BAG OF ICE	6106.4350	18993		-21	1.00
74	04-23-97	BAG OF ICE	6106.4350	17076		-29	1.00
75	04-18-97	BAG OF ICE, CUPS	6106.4350	16317		-34	2.95
Total							\$12.85
(FNBC)		FIRST NATIONAL BANK IN CAMERON					
49	05-21-97	PAYMENT R32 OF 60	6613.4090	M410AA		-1	621.30
Total							\$621.30
(HART)		HART INFORMATION SERVICES					
60	05-09-97	100 CITATIONS PERS	6325.4550	747522		-13	58.00
61	05-09-97	SHIPPING & HANDLING	6325.4550	747522		-13	4.64
Total							\$62.64
(HOSP)		SABINE COUNTY HOSPITAL					
19	02-24-97	REBA COOPER/ LAB FEE	6543.5600	096677		-88	25.75
Total							\$25.75

Vol CC Pg 125

SABINE COUNTY GENERAL FUND
 ACCOUNTS PAYABLE LEDGER
 05-22-97

052297
 Page 3

Entry	Date	Description	Account R	Document	Stat	Due	Amount
(IBM)							
			IBM CORPORATION - DP7				
44	05-01-97	DOT BAND PRINTER	6613.4090	5760216		-21	95.00
Total							----- \$95.00
(JACK)							
			JACK LEATH				
31	05-19-97	360 MILES @ .28 MILE	6427.4000	0		-3	100.80
32	05-19-97	3 1/2 DAYS MEALS	6427.4000	0		-3	87.50
Total							----- \$188.30
(JAMC)							
			JANICE MCDANIEL				
33	05-02-97	1130 MILES @ .28 MI	6470.4030	0		-20	316.40
34	05-02-97	6 DAYS MEALS @ \$25	6470.4030	0		-20	150.00
35	05-02-97	5 NIGHTS HOTEL	6470.4030	0		-20	357.10
Total							----- \$823.50
(KCDR)							
			K-C DRUGS R2				
68	05-22-97	UPS FEE	6315.4030	0		0	10.59
Total							----- \$10.59
(OUST)							
			THE OUTDOOR STORE				
37	05-14-97	TWO SNAPS	6310.4080	R21		-8	3.58
Total							----- \$3.58
(PITB)							
			PITNEY BOWES				
47	05-14-97	MAILING EQUIPMENT	6612.4090	3464138		-8	130.00
Total							----- \$130.00
(QUCO)							
			QUILL CORPORATION				
64	04-30-97	3 PRINTER CARTRIDGES	6310.4750	2976842		-22	79.37
Total							----- \$79.37
(ROST)							
			RONALD L. STEWART				
67	05-13-97	NO CATCH FEE	6425.5600	294052		-9	75.00
Total							----- \$75.00

Vol CC Pg 126

SABINE COUNTY GENERAL FUND
 ACCOUNTS PAYABLE LEDGER
 05-22-97

052297
 Page 4

Entry	Date	Description	Account R	Document	Stat	Due	Amount
(ROSU)		ROGERS OFFICE SUPPLY					
56	05-08-97	BOX RUBBER BANDS	6310.4550	7900		-14	0.75
57	05-08-97	BOX 10X15 CLASP ENVE	6310.4550	7900		-14	10.99
58	05-08-97	3 ROLLS TAPE	6310.4550	7900		-14	4.50
79	05-16-97	DOZ POST-IT NOTES	6310.4000	8049		-6	9.48
Total							\$25.72
(SPLW)		SPEEDY LUBE & WASH					
20	05-12-97	OIL AND LUBE	6335.5600	UNIT R63		-10	23.95
21	05-12-97	AIL FILTER	6335.5600	UNIT R63		-10	8.50
Total							\$32.45
(SYSC)		SYSCO FOOD SERVICE - BEAUMONT					
24	05-16-97	PINE CLEANER	6313.5600	70516006		-6	28.24
25	05-16-97	PRISONERS BOARD	6542.5600	70516006		-6	277.88
26	05-02-97	PAN SHEET ALMN 18	6500.5600	70502007		-20	6.93
27	05-02-97	GLASS CLEANER, MOP	6313.5600	70502007		-20	42.68
28	05-02-97	PRISONERS BOARD	6542.5600	70502007		-20	206.57
29	05-09-97	PRISONERS BOARD	6542.5600	70509009		-13	278.42
30	05-09-97	JANITORIAL SUPPLIES	6313.5600	70509009		-13	133.16
Total							\$973.88
(TAWA)		TANYA WALKER					
52	05-21-97	1131 MILES @ .28 MI	6470.4500	0		-1	316.40
53	05-21-97	4 NIGHTS HOTEL	6470.4500	0		-1	285.68
54	05-21-97	4 DAYS MEALS @ \$25	6470.4500	0		-1	100.00
Total							\$702.08
(THHA)		THOMAS J. HAMILTON					
59	05-12-97	DEPOSIT SLIPS	6310.4550	0		-10	10.61
Total							\$10.61
(TRTE)		TRIPLE "T" ENTERPRISES					
76	05-20-97	MID TOWER/POWER SUPP	6460.4970	6		-2	59.00
77	05-20-97	SHIPPING & HANDLING	6460.4970	6		-2	36.85
78	05-20-97	LABOR	6460.4970	6		-2	75.00
Total							\$170.85

Vol CC Pg 127

SABINE COUNTY GENERAL FUND
 ACCOUNTS PAYABLE LEDGER
 05-22-97

052297
 Page 5

Entry	Date	Description	Account R	Document	Stat	Due	Amount
(TXAC) TEXAS ASSOCIATION OF COUNTIES							
48	05-09-97	UNEMPLOYMENT PAYMENT	6614.4090	2020		-13	1,077.84
Total							\$1,077.84
(WEST) WEST PUBLISHING PAYMENT CENTER							
50	04-08-97	TX RLS CT ST&FD 97PA	6524.4500	92615123		-44	24.40
51	04-04-97	TX PR V40-43 97PP	6524.4500	92639088		-48	45.75
Total							\$70.15
(XROX) XEROX CORPORATION							
45	05-14-97	MONTHLY RENTAL FEE	6500.4090	56666938		-8	137.27
46	05-14-97	3288 COPIES	6500.4090	56666938		-8	34.85
Total							\$172.12
Total of Ledger							\$9,561.90

Vol CC Pg 128

SIGN HERE FOR PAYMENT APPROVAL

Jack Leath
Jack Leath
County Judge

SIGN HERE FOR PAYMENT APPROVAL

Janice McDaniel
Janice McDaniel
County Clerk

SIGN HERE FOR PAYMENT APPROVAL

Keith C. Clark
Keith C. Clark
Commissioner, Pct. #1

SIGN HERE FOR PAYMENT APPROVAL

Lynn Smith
Lynn Smith
Commissioner, Pct. #2

SIGN HERE FOR PAYMENT APPROVAL

Doyle Dickerson
Doyle Dickerson
Commissioner, Pct. #3

SIGN HERE FOR PAYMENT APPROVAL

Will Smith Sr.
Will Smith Sr.
Commissioner, Pct. #4

APPROVED FOR PAYMENT BY SABINE COUNTY COMMISSIONERS COURT MAY 23, 1997.

Vol CC Pg 129

SABINE COUNTY ROAD & BRIDGE
 ACCOUNTS PAYABLE LEDGER
 05-22-97

052297
 Page 1

Entry	Date	Description	Account R	Document	Stat	Due	Amount
(BEES)		BECKCOM'S ENGINE SERVICE					
12	04-28-97	SHARPEN CHAIN	6346.6040	0		-24	4.00
Total							\$4.00
(BIG4)		BIG "4", INC.					
1	05-12-97	72 YDS ROADS BASE	6662.6010	00316046		-10	432.00
6	05-12-97	468 YDS ROAD BASE	6662.6030	00316043		-10	2,808.00
7	05-12-97	12 YDS ROAD BASE	6662.6030	00316045		-10	72.00
Total							\$3,312.00
(DODI)		DOYLE DICKERSON					
8	05-19-97	360 MILES @ .28 MILE	6655.6030	0		-3	100.80
9	05-19-97	3 1/2 DAYS MEALS	6655.6030	0		-3	87.50
Total							\$188.30
(ETCO)		EASTEX COMMUNICATIONS					
21	04-30-97	CELL BATTERY	6652.6010	026108		-22	35.00
22	05-02-97	TX CRYSTAL	6652.6020	026104		-20	25.00
23	05-02-97	RX CRYSTAL	6652.6020	026104		-20	25.00
24	05-02-97	RE-CRYSTALLED CH.1	6652.6020	026104		-20	60.00
Total							\$145.00
(GEOB)		GEO. P. BANE, INC.					
4	05-07-97	BALL JOINT	6356.6010	01011466		-15	15.11
14	05-15-97	FIELD LABOR	6345.6010	01011636		-7	360.00
15	05-15-97	220 MILES @ \$1 MILE	6345.6010	01011636		-7	220.00
16	05-15-97	MISCELLANEOUS SUPPLY	6356.6010	01011636		-7	7.20
17	05-15-97	SPRING	6356.6010	01011625		-7	10.38
18	05-15-97	SPRING	6356.6010	01011625		-7	23.31
19	05-15-97	FREIGHT IN	6356.6010	01011625		-7	3.85
20	05-15-97	FREIGHT OUT	6356.6010	01011625		-7	2.70
Total							\$642.55
(GMWS)		G-M WATER SUPPLY CORP.					
5	05-09-97	WATER BILL	6440.6020	1262		-13	20.10
Total							\$20.10

Vol CC Pg 130

SABINE COUNTY ROAD & BRIDGE
 ACCOUNTS PAYABLE LEDGER
 05-22-97

052297
 Page 2

Entry	Date	Description	Account R	Document	Stat	Due	Amount
(KECL)			KEITH CLARK				
2	05-19-97	360 MILES @ .28 MILE	6655.6010	0		-3	100.80
3	05-19-97	3 1/2 DAYS MEALS	6655.6010	0		-3	87.50
Total							\$188.30
(MCCI)			MATHEWS CONSTRUCTION CO., INC.				
13	02-27-97	4.48 TONS TYPE F	6378.6040	0258169		-85	143.36
Total							\$143.36
(WISM)			WILL SMITH SR.				
10	05-19-97	3 1/2 DAYS MEALS	6655.6040	0		-3	87.50
11	05-19-97	360 MILES @ .28 MILE	6655.6040	0		-3	100.80
Total							\$188.30
Total of Ledger							\$4,831.91

Vol CC Pg 131

SIGN HERE FOR PAYMENT APPROVAL

Jack Leath
Jack Leath
County Judge

SIGN HERE FOR PAYMENT APPROVAL

Janice McDaniel
County Clerk

SIGN HERE FOR PAYMENT APPROVAL

Keith C. Clark
Keith C. Clark
Commissioner, Pct. #1

SIGN HERE FOR PAYMENT APPROVAL

Lynn Smith
Lynn Smith
Commissioner, Pct. #2

SIGN HERE FOR PAYMENT APPROVAL

Doyle Dickerson
Doyle Dickerson
Commissioner, Pct. #3

SIGN HERE FOR PAYMENT APPROVAL

Will Smith Sr.
Will Smith Sr.
Commissioner, Pct. #4

APPROVED FOR PAYMENT BY SABINE COUNTY COMMISSIONERS COURT MAY 23, 1997.

SABINE COUNTY R & B SPECIAL
 ACCOUNTS PAYABLE LEDGER
 05-22-97

052297
 Page 1

Entry	Date	Description	Account R	Document	Stat	Due	Amount
(HNEC)			HI-WAY EQUIPMENT CO				
1	05-01-97	FOUR U-BOLTS	605.6355	H06961		-21	93.00
2	05-13-97	TWO BELTS	605.6355	H07376		-9	54.96
3	05-13-97	FREIGHT OUT	605.6355	H07376		-9	3.70
Total							\$151.66

Total of Ledger

\$151.66

SIGN HERE FOR PAYMENT APPROVAL

Jack Leath

Jack Leath
 County Judge

SIGN HERE FOR PAYMENT APPROVAL

Janice McDaniel
 County Clerk

SIGN HERE FOR PAYMENT APPROVAL

Keith C. Clark

Keith C. Clark
 Commissioner, Pct. #1

SIGN HERE FOR PAYMENT APPROVAL

Lynn Smith

Lynn Smith
 Commissioner, Pct. #2

SIGN HERE FOR PAYMENT APPROVAL

Doyle Dickerson

Doyle Dickerson
 Commissioner, Pct. #3

SIGN HERE FOR PAYMENT APPROVAL

Will Smith Sr.

Will Smith Sr.
 Commissioner, Pct. #4

APPROVED FOR PAYMENT BY SABINE COUNTY COMMISSIONERS COURT MAY 23, 1997.

Vol CC Pg 133

RECORD RETENTION FUND
ACCOUNTS PAYABLE LEDGER
05-22-97

052297
Page 1

Entry	Date	Description	Account R	Document	Stat	Due	Amount
(FNBC)		FIRST NATIONAL BANK IN CAMERON					
1	05-21-97	PAYMENT R32 OF 60	775.6450	M410AA		-1	1,000.00
		Total					\$1,000.00
		Total of Ledger					\$1,000.00

SIGN HERE FOR PAYMENT APPROVAL

Jack Leath

Jack Leath
County Judge

SIGN HERE FOR PAYMENT APPROVAL

Keith C. Clark

Keith C. Clark
Commissioner, Pct. #1

SIGN HERE FOR PAYMENT APPROVAL

Doyle Dickerson

Doyle Dickerson
Commissioner, Pct. #3

SIGN HERE FOR PAYMENT APPROVAL

Janice McDaniel

Janice McDaniel
County Clerk

SIGN HERE FOR PAYMENT APPROVAL

Lynn Smith

Lynn Smith
Commissioner, Pct. #2

SIGN HERE FOR PAYMENT APPROVAL

Will Smith Sr.

Will Smith Sr.
Commissioner, Pct. #4

APPROVED FOR PAYMENT BY SABINE COUNTY COMMISSIONERS COURT MAY 23, 1997.

Vol CC Pg 134

HOTEL/MOTEL TAX
 ACCOUNTS PAYABLE LEDGER
 05-22-97

052297
 Page 1

Entry	Date	Description	Account R	Document	Stat	Due	Amount
(SUVP)							
1	05-14-97	24 COPIES OF VIDEO	6100.5800	0		-8	120.00

		Total					\$120.00

Total of Ledger

 \$120.00
 =====

SIGN HERE FOR PAYMENT APPROVAL

Jack Leath

Jack Leath
 County Judge

SIGN HERE FOR PAYMENT APPROVAL

Janice McDaniel
 County Clerk

SIGN HERE FOR PAYMENT APPROVAL

Keith C. Clark

Keith C. Clark
 Commissioner, Pct. #1

SIGN HERE FOR PAYMENT APPROVAL

Lynn Smith

Lynn Smith
 Commissioner, Pct. #2

SIGN HERE FOR PAYMENT APPROVAL

Doyle Dickerson

Doyle Dickerson
 Commissioner, Pct. #3

SIGN HERE FOR PAYMENT APPROVAL

Will Smith Sr.

Will Smith Sr.
 Commissioner, Pct. #4

APPROVED FOR PAYMENT BY SABINE COUNTY COMMISSIONERS COURT MAY 23, 1997.

Vol CC Pg 135

MONTHLY ACCOUNT OF FEES AND EXPENSES

Office of Daniel Featherston, J.P. For Month Ending April 1997
SABINE Co Pct # 2

ITEM	
Total Collections	\$ 5,947.67
Check to Treasurer	5,134.60
Check to TP&WL 85% of Their Fines	241.40
Restitution Paid to Local People on Iss. Bad CK	571.67
Criminal Cases Filed	78
Cases Where Defendant Pled Guilty and Paid Fine	56
Dismissed After Driver Safety Course	7
Dismissed After Proof of Liability Insurance	6
Served Time in Jail to Pay Fine	0
Juvenile Warnings Given	0
Inquests	1
County Complaints Accepted	5
Felony Complaints Accepted	1
Warrants Issued	5
Statutory Warnings Given	14
Cases Referred to Teen Court	1
Search Warrants Issued	0
Civil Cases Tried	0
	=

I certify that the above account is true and correct.

Brenda Kilgore Clerk
Sabine County, Texas

Sworn to and subscribed before me this 1st day of May 1997

Vol CC Pg 136 Daniel Featherston

COPY

EASEMENT

THE STATE OF TEXAS
COUNTY OF JASPER

§
§ KNOW ALL MEN BY THESE PRESENTS:
§

That the undersigned for good and valuable consideration, the receipt whereof is hereby acknowledged, does hereby grant unto the Hines Cemetary, and to its successors, the right to enter upon the land of the undersigned, situated in the County of Sabine, State of Texas, and being described as follows:

Being a right-of-way easement of approximately 30 foot in width and traveling generally in an easterly direction from what is now known as the County Line Road to the Hines Cemetary, which is situated on the Ben Lindsey Survey, Abstract 30, Sabine County, Texas. Said tract being more particularly in the Deed Records of Sabine County, Texas Volume 2 Page 365.

DATED THIS THE 25th DAY OF APRIL, 1997.

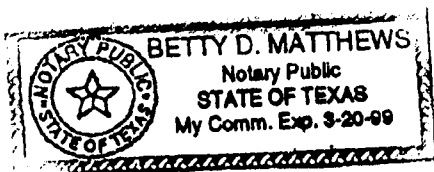
Jack Martindale

Jack Martindale

THE STATE OF TEXAS
COUNTY OF JASPER

BEFORE ME, the undersigned authority, on this day personally appeared JACK MARTINDALE known to me to be the person whose name is subscribed to the foregoing instrument and acknowledged to me that he executed the same for the purposes and consideration therein expressed.

GIVEN UNDER MY HAND AND SEAL OF OFFICE THIS THE 25th DAY OF April, 1997.



Betty D. Matthews

Notary Public in and for
Jasper County, Texas

Vol CC Pg 132

NOTICE OF
REQUEST FOR BIDS

{Fuel-gasoline-diesel}

The Commissioner Court of Sabine County will accept bids for gasoline, diesel fuel, motor oil, grease, and hydraulic fluid for the County's use for the period July 1, 1997 through June 30, 1999.

Anticipated usage requirements may be obtained by contacting the County Judge's office at 409-787-3543.

The successful bidder will be required to furnish all bulk tanks and pumps required, except those currently owned by the County, and shall be responsible for all maintenance of said equipment.

Sealed bids should be submitted to the Sabine County Clerk, Janice McDaniel, P.O. Box 580, Hemphill, TX 75948. Bids should be submitted no later than 8:30 a.m., 6-23 1997. Bids should be marked "Fuel-97". Bids will be opened and appropriate action taken during the regular meeting of Commissioners Court of Sabine County, Texas, 6-23 1997, beginning at 8:30 a.m.

Sabine County reserves the right to accept or reject any or all bids received.

RUN 5/28
6/4

Vol CC Pg 138

Nothing Remains Of Shacklefoot

BY RALPH RAMOS

State Editor

PATROON BAY

Shacklefoot existed as a log Sabine community in upper Sabine county so long ago there are no living beings to remember it first hand.

But, exist it did and does even now in legend and myth. Herman Bragg has lived next door to the Shacklefoot site for all of his 80 plus years; the town was gone before his time.

A writer in Ferguson Forum in 1934 noted there had been no one 60 years earlier, that'd be 1874, who had any recollection of ever seeing or having known anyone who claimed direct knowledge of the original occupants of the settlement.

Bragg recalls that the Shacklefoot community's old well stood alongside the road. "As kids going to school we used to chunks rocks into the well."

But, then highway workers expanded the roadway until the well was finally covered up and has now disappeared.

As a young farmer Bragg worked the fields where Shacklefoot stood. He plowed up old iron pots and broken pieces of pottery all over the hillside and top where the old log community once stood. But, shortly after the century's change, Bragg could remember no other sign of human habitation. There were no crumbling ruins of log houses such as those noted in 1884 when Ferguson Forum's writer, M.E. Alford, wrote, "there were to be seen a dozen or more log huts crumbled into ruins and overgrown, more or less, by pine trees."

Louisiana and Texas, ideally located for plunderers and highway men, pirates or what have you.

The town was about four miles up the winding Old Spanish Road from then Carter's Ferry (long ago inundated by the flood of Toledo Bend Reservoir's creation). Less than a mile to the west was Patroon Bayou.

Among the Shacklefoot myths is that of its naming. The story goes that it was named for a seaso caretaker in this place of hiding who had a wooden leg. As he walked, the artifice made a peculiar shacking noise, hence the name Shacklefoot.

Though there are few today who show interest in ancient Shacklefoot, a story is still

passed along that the pirate Jean LaFitte had sailed the Sabine and built a refuge here. His band of pirates were at Shacklefoot when General Andrew Jackson called on them for assistance in repulsing the British at New Orleans.

What were they doing at Shacklefoot? Mining gold yes, mining gold. But, that's a story for later telling.

There was romance, too, at Shacklefoot, if we listen to the fading song of myth. LaFitte

had a daughter named Marie. Her name was Ruby. She was enthroned as the queen of the town. Whomever or whatever she was, the legend, says she definitely was boss of the

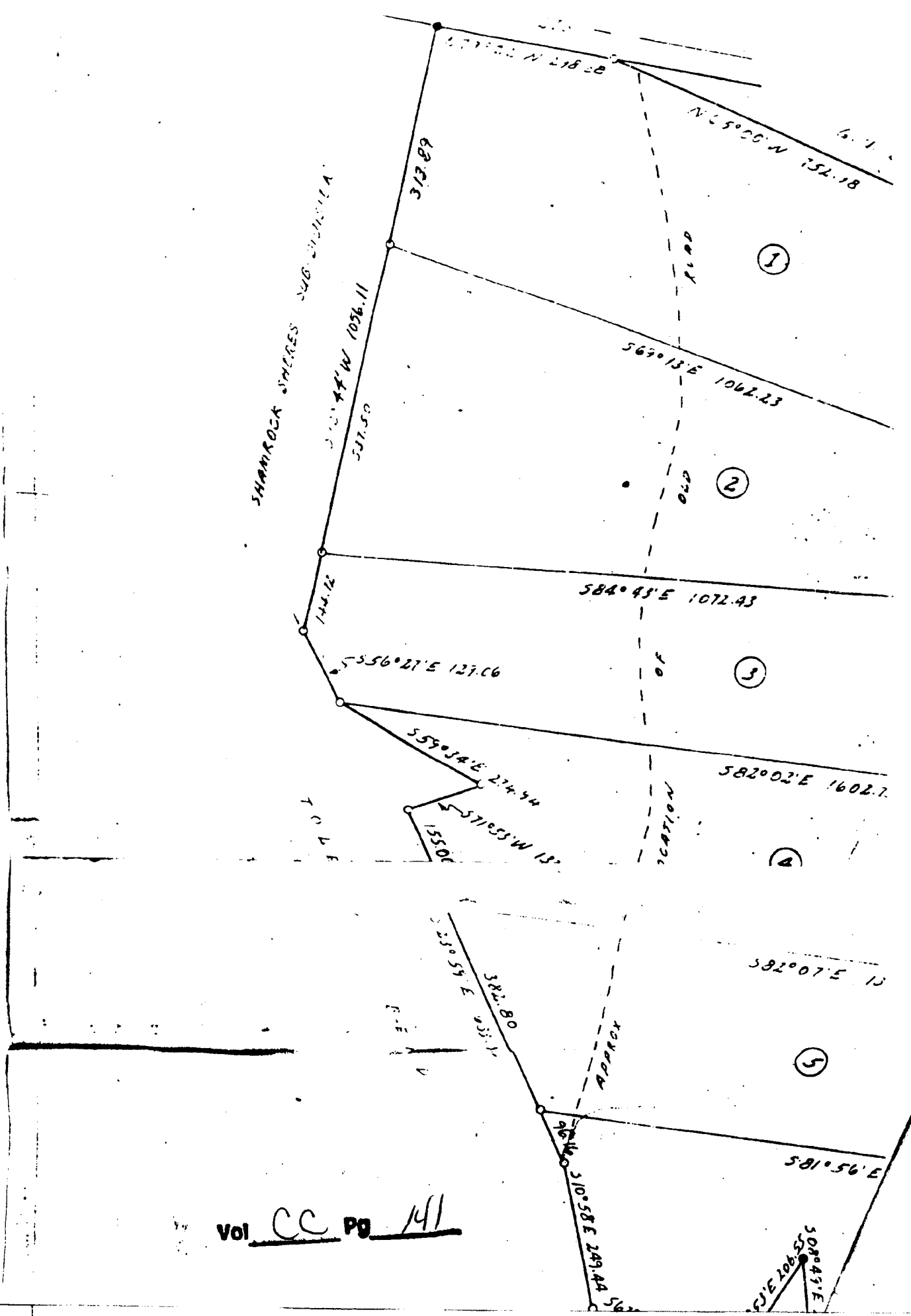
townley hunch at Shacklefoot say that when LaFitte left the New Orleans he abandoned Shacklefoot and his Polly Crow. After he was gone she bore his son. Later she and a few others who had remained behind straggled away, making their way into Louisiana, to establish a new community and a new life.

Just a few miles away in Louisiana are a few bearing the family name of Crow.

is the site of Shacklefoot. Its well is beneath the road in front.



Herman Bragg lives next to



Commissioner's Court
May 23, 1994

Proposed Road Name Statement

1. Originally it was proposed to 9-1-1 personnel that the road that accesses our home be named HERMAN ROAD because of our family history and heritage concerning the land the road is entirely on - that is the Herman Bregg Farm. The road was to permit the heirs of Herman Bregg (7 children) access to their inheritance. The deed of transfer and the divisional plat of the land clearly indicates this road which approximates an old road already on the land.
2. 9-1-1 personnel indicated that this proposal was of record but they could not find any record of the individuals who proposed this name.

Vol CC PG 142

3. At this moment, to my understanding, the system ~~had~~ has either adopted or is in the process of adopting a recent proposal of ~~Reedie's Rd~~ Reedie's Rd as the name of this presently county

maintained road. This information was given to me recently by 9-1-1 personnel when I petitioned for a change from Herman Road to the historically significant name of "SHACKLEFOOT".

Historians are aware of the historical significance of "Shacklefoot" in the early beginnings of our country. I present to this court a copy of a newspaper article my Grandfather helped to write.

I also present copies of the Herman Bragg Farm and a copy of the plat showing Papa Bragg's designation of the road for family inheritance purposes.

A copy of the historical article by State Editor Ralph Ramos is also presented. The article includes a picture of "Mr. Herman".

Please consider our request which was given to 9-1-1 personnel (wills) and to this court verbally, in writing and by presentation today. I would be happy to answer any questions. My Dad, William Bragg, is available for any questions.

Vol CC PD 143

Texas Association of Counties
P.O. Box 2131
Austin, Texas 78768

Facsimile Cover Sheet

To: Janice McDaniel
Company: Sabine County Clerk
Phone:
Fax: 409/787-2044

From: Lauren C. Henry
Phone: (512)478-8753
Fax: (512)478-1426

Date: 05/27/97
Pages including this cover page: 2

Comments: Janice, here is the renewal sheet for Sabine County. It is my understanding the County chose the New Rates effective 7/1/97. Let me know if you have questions.

Please call Lauren Henry at (512)478-8753 if you are having difficulty receiving this document.

Vol CC Pg 144

**Dental Benefits
High Plan**

COMPREHENSIVE DENTAL CARE BENEFITS SUMMARY

Prepared for

ABC County

By

BLUE CROSS AND BLUE SHIELD OF TEXAS, INC.

Preventive Care Benefits	100%
Basic Care Benefits	80%
Major Care Benefits	50%

The following benefit items apply to
Preventive, Basic and Major Care Benefits:

Maximum benefits per calendar year	\$1,250
Deductible per calendar year, per participant (includes three month carryover)	\$50
Maximum deductibles per family	3
Deductible waived on Preventive Care Benefits	Yes
Deductible credit from prior carrier	Yes

**Dental Benefits
High Plan**

Orthodontic Benefits 50%
Maximum lifetime benefits \$1,000
Deductible None
Available only to participants
under 19 years of age Yes

Eligibility

Dependent children are covered until age
19, or 25 if full-time student. Disabled
dependent children can be covered
beyond age 25. Yes
Retirees are eligible for coverage Yes
Employees may enroll dependent children up
to age 5 on the first of the month following
application with no late enrollment penalty. Yes
Coverage effective dates are contingent on
the employee and dependents being "actively
at work" on the date coverage would otherwise
have become effective. Yes

**Dental Benefits
High Plan**

Additional Benefit Features:

A pre-existing condition exclusion will apply to expenses involving the replacement of teeth that were missing prior to the effective date of the dental contract. Yes

This exclusion will not apply to:

- Any participant who becomes effective on the dental contract date who was covered under a previous group dental care contract held by the Employer.
- Any participant who has been continuously covered for 24 months under a group dental care contract with BCBSTX which included prosthetic benefits.

When the course of treatment will be in excess of \$300, a predetermination request should be submitted to BCBSTX in advance of treatment. Yes

Benefits are paid according to reasonable charges as determined by BCBSTX. Yes

Please note that our dental is a "freestanding" product and can be purchased separately from the health insurance, i.e., an employee can have only himself covered for health but have dental for the family and vice versa.

This is a *summary* of benefits only. Complete details will be included in the master contract.

**Texas Association of Counties
Notice of Renewal
Sabine County
Blue Cross & Blue Shield of Texas, Inc. Group # 36227**

Health	Current Rates	New Rates ^(a) 7-1-97	Alternate Plan 1 ^(b)	Alternate Plan 2 ^(c)
Employee Only	\$ 176.88	\$ 226.41	\$ 228.67	\$ 244.52
Employee & 1 Child	\$ 225.90	\$ 289.15	\$ 292.05	\$ 312.28
Employee & 2+ Children	\$ 290.90	\$ 372.35	\$ 376.07	\$ 402.14
Employee & Spouse	\$ 368.10	\$ 471.17	\$ 475.89	\$ 508.86
Employee & Family	\$ 482.92	\$ 618.13	\$ 624.31	\$ 667.58

(a) New rates on in-force benefits.

(b) Current benefit plan with the following changes: \$10 co-pay

(c) Current benefit plan with the following changes:

Deductible of \$200 in-network/\$500 out-of-network for individual

Deductible of \$600 in-network/\$1500 out-of-network for family

Coinsurance stoploss of \$1000 in-network/\$3000 out-of-network for individual

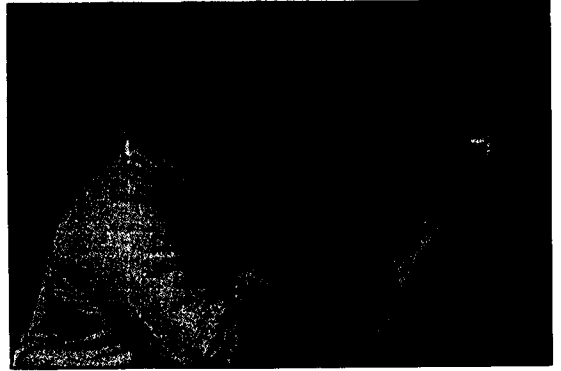
Coinsurance stoploss of \$ 3000 in-network/\$9000 out-of-network for family

No change in Life rates.

New rates are effective 7-1-97 through 10-1-98.

Vol CC Pg 148

For County Choice Members



YOUR
 VISION
 BENEFIT

COVERED SERVICES

- ◆ Annual Wellness Exam*.....
- ◆ Contact Lenses.....

- ◆ Real Value.....

- ◆ Other Frames, Lenses.....
 and Lens Options*

- ◆ Knockabouts &.....
 No Rules collections

- ◆ Non-RX Sunglasses and
 Accessories

**OPT-33 Vision Benefit
 BENEFIT**

- \$35.00 (will include dilation when medically indicated)
- 20% Discount on materials only. (Excludes disposables or programmed replacement lenses, fit and follow-up, professional services and prepaid service agreements.)
- 15% Discount on a complete pair of glasses (frames and lenses). Choose from a selection of over 350 frames.
 Single vision starting at.....\$59.00
 Bifocal FT-28 starting at...\$89.00
 Trifocal 7x28 starting at....\$119.00
- 33% Discount. Choose from over 2000 frames including the latest designer brands and most recent technology in lenses including thinner and lighter Hi-Index and Anti-Reflective coatings. *Excludes packaged price collections.

Retail Lens Prices (CR-39)

Single Vision \$51.....	Member pays \$34
FT-28 Bifocal \$81	Member pays \$54
7x28 Trifocal \$111.....	Member pays \$74
Lens Options * \$20	Member pays \$13

**tint, edge polish, UV coating, scratch-resistant coating, eyeglass certificate*

- 15% Discount. Choose from a collection of over 175 frames for all school age children and young adults. Features everyday low packaged prices starting at \$89.00
- 15% Discount

Vol CC Pg 149



EyeMasters

Binyon's

Texas Association of Counties
CountyChoice Dental Plan
Sabine County Proposal

Dental Summary of Benefits

Maximum Annual Benefit	\$ 1,250
Preventive Care	100 %
Basic Care	80 %
Major Services	50 %
Annual Deductible <i>(waived for preventive care)</i>	\$ 50
Orthodontics <i>(Up to age 19)</i>	50% up to \$1,000

Rates per Month

TAC High Dental Plan

Employee Only

\$ 13.00

Additional/family

\$ 21.66 without orthodontics

\$ 25.24 with orthodontics

Please note that orthodontics is not optional per individual family. If it is offered by the group, each family must pay the \$25.24 rate.

**Texas Association of Counties
Notice of Renewal
Sabine County
Blue Cross & Blue Shield of Texas, Inc. Group # 36227**

Health	Current Rates	New Rates ^(a) 7-1-97	Alternate Plan 1 ^(b)	Alternate Plan 2 ^(c)
Employee Only	\$ 176.88	\$ 226.41 ⁻	\$ 228.67 ⁻	\$ 244.52
Employee & 1 Child	\$ 225.90	\$ 289.15	\$ 292.05	\$ 312.28
Employee & 2+ Children	\$ 290.90	\$ 372.35	\$ 376.07	\$ 402.14
Employee & Spouse	\$ 368.10	\$ 471.17	\$ 475.89	\$ 508.86
Employee & Family	\$ 482.92	\$ 618.13	\$ 624.31	\$ 667.58

(a) New rates on in-force benefits.

(b) Current benefit plan with the following changes: \$10 co-pay

(c) Current benefit plan with the following changes:

Deductible of \$200 in-network/\$500 out-of-network for individual

Deductible of \$600 in-network/\$1500 out-of-network for family

Coinsurance stoploss of \$1000 in-network/\$3000 out-of-network for individual

Coinsurance stoploss of \$ 3000 in-network/\$9000 out-of-network for family

No change in Life rates. ^{\$} .50 per 1000.

New rates are effective 7-1-97 through 10-1-98.

$$\begin{array}{r} 226.41 \\ 7.50 \\ \hline 233.91 \\ \$ 11929.41 \end{array}$$

Vol CC Pg 151

Vrooman Insurance Placement SERVICE
 Bill Vrooman, agent
 P.O. BOX 1107
 HEMPHILL, TX. 75948-1107
 409/787-3413

CORE PLAN

PREMIUM: DEPENDENT COVERAGE

CO-INSURANCE: 80/20% TO \$5000. STOP-LOSS

Deductible:	\$250.00	\$500.00
Spouse:	\$238.91	\$209.19
Child/Children:	106.15	93.23
Spouse/Children:	345.06	302.45
Optional Benefits:	20.09	20.07

238.06

1
 820
 445

 1375

~~HA~~
 11129.13
 654.15
 650.93

 12434.41

244.92

4/30/97

For the Benefit of:

Effective Date: 6/1/97

Lamar Life

LAMAR LIFE INSURANCE COMPANY
P.O. Box 880 - Jackson, MS 39206-0880
Phone (601) 948-3100

COUNTY OF SABINE

This plan contains:
\$500 Deductible, 90% / 80% of 5000
in Network with \$10 Office Copay
PPO Network: HEALTHSMART

State TX County SABINE
PCS is included for 390.56
Wellness is not included (add \$650.93)

ZIP Code 759

Agent Name: BILL VROOMAN

Maternity - covered as any illness
Accident Expense Benefit: \$500 (at no Extra Charge)

	No. Units	Volume	per unit
Employee Medical	51		218.23
Spouse Medical	4		214.98
Child(ren) Medical	10		120.91
Total Medical:			\$13,198.75

324.95
per unit

Employees Only
 11,129.73
 12,357.90
 16
 Vol

	No. Units	Volume	per unit
Employee Life Insurance	51	735,000	\$0.89 per \$1,000
Total Life:			\$654.15

No. Units

\$50 Deductible

654.15

Employee Dental	51		\$0.00
Spouse Dental	4		\$0.00
Child(ren) Dental	10		\$0.00
Total Dental:			\$0.00

218.23
12.23
30.48

	No. Units	Volume	Not Selected
Weekly Income	0	0	\$0.00 per \$10
Total Weekly Income:			\$0.00

No. Units

Not Selected

218.23
13.35
12.23
243.54
13.00
10.06
254.00
255.49
25.00
11,808.88

	No. Units	Volume	Not Selected
Dependent Life Insurance	0		\$0.00
Total Dependent Life:			\$0.00

Administration Fee 25.00

Total Premium \$13,877.90

This illustration is not an offer for insurance, an application, nor a part of any application for insurance. Do NOT cancel your present insurance until you are notified in writing that coverage has been accepted. Initial rates are guaranteed for 12 months. C2830 E 110 0 9 1570 88

4/30/97



LAMAR LIFE INSURANCE COMPANY
P.O. Box 880 - Jackson, MS 39205-0880
Phone: (601) 948-3100

COUNTY OF SABINE

For the Benefit of:

Effective Date: 6/1/97

This plan contains:

\$250 Deductible, 90% / 80% of 5000

in Network with \$10 Office Copay

PPO Network: HEALTHSMART

State TX County SABINE

Zip Code 759

Agent Name: BILL VROOMAN

PCS is included for 356.03
Wellness is not included (add \$640.85) —

Maternity - covered as any illness
Accident Expense Benefit: \$500 (at no Extra Charge)

No. Units

per unit

Employee Medical	\$1	\$238.06
Spouse Medical	4	\$234.52
Child(ren) Medical	10	\$131.90
Total Medical:		\$14,398.14

No. Units

Volume

per unit

Employee Life Insurance	51	735,000	\$0.89 per \$1,000
Total Life:		\$654.15	

No. Units

\$50 Deductible

Employee Dental	51	\$25.64
Spouse Dental	4	\$25.64
Child(ren) Dental	10	\$29.93
Total Dental:		\$1,709.70

No. Units

Volume

per unit

Weekly Income	0	\$0.00	per \$10
Total Weekly Income:		\$0.00	

No. Units

Not Selected

Dependent Life Insurance	0	\$0.00
Total Dependent Life:		\$0.00

Administration Fee 25.00

Total Premium \$16,786.99

Without Dental

Employees Only
12,141.06

654.15

1307.64

25.00

14,127.85

12,826.31

Vol CC Pg 154

This illustration is not an offer for insurance, an application, nor a part of any application for insurance. Do NOT cancel your present insurance until you are notified in writing that coverage has been accepted. Initial rates are guaranteed for 12 months.
02830 E 110 0.9 1510.88 1,200

The State Of Texas
County Of Sabine

I HEREBY CERTIFY THAT THESE DOCUMENTS WERE FILED AND
DULY RECORDED IN THE COMMISSIONER COURT MINUTES OF SABINE
COUNTY, TEXAS.

VOL. AC PAGE 121
JANICE MEDANIEL COUNTY CLERK

BY Louise Clark
Deputy



Vol CC PD 155