

Monday, September 28, 1998, the Sabine County Commissioners' Court met in regular session. The following members were present:

Jack Leath	County Judge
Keith Clark	Commissioner Pct. #1
Lynn Smith	Commissioner Pct. #2
Doyle Dickerson	Commissioner Pct. #3
Will Smith, Sr.	Commissioner Pct. #4
Janice McDaniel	County Clerk

Judge Leath called the meeting to order at 8:30 a.m. and Bro. Clarence Howell led the Court in prayer.

Agenda item #1-General Business

Commissioner Clark moved to approve the minutes as written for the September 11 emergency meeting and the September 14 regular session of Court. Commissioner Lynn Smith seconded. All voted for. Motion carried.

Agenda item #3-Set Sheriff and Constable Fees for 1999

Sheriff Philips recommended leaving the fees the same as were set by the Court last year. The fees are \$100.00 for writs and \$75.00 for citations.

Commissioner Lynn Smith said our fees are considerably higher than Newton and Jasper Counties. He thinks we should be more in line with our surrounding Counties.

Commissioner Lynn Smith moved to table this item until the October 12 regular session of Court. Commissioner Clark seconded. All voted for. Motion carried.

Agenda item #4-Discuss 911 Office and Storage Building/Possible-Take Action

Judge Leath said as reported at the last session of Court, the school is needing the office space being used by 911. Also, the Tax office is needing storage space. He said we do not have any office space available in any of the County's buildings. He is proposing to build a 16 X 36 building behind the Tax office or by the Farmers Market behind the jail. The building will house two offices. One office will be for 911 and the other will be for an office now located in the annex. The Tax office could then use the vacated office for storage and to have the records readily available for use and for better security. Judge Leath said he has checked with a contractor and was told the building can be built for less than \$15,000.00, which means we would not have to go out for bids.

Judge Leath moved to proceed with plans as they have been preliminarily drawn to build this building for two additional offices. The site is to be determined after discussed with the City. Commissioner Dickerson seconded. All voted for. Motion carried.

Agenda item #5-Discuss Pay Schedule for Road and Bridge

This item is rescheduled for October 12 Court session.

Agenda item #6-Sterle and King Road/Pct. #4

Mr. Sterle is present. Mr. Mike Garrett is not present.

Commissioner Will Smith said he asked Mr. Sterle and Mike Garrett to be present this morning. He said there is a problem with the road currently known as "Sterle Road" in precinct #4. According to Commissioner Court minutes, August 13, 1973, the road was accepted as a County road. The road has not been fenced since then. Commissioner Smith said Mike Garrett has placed a gate on the road and he is making a motion to tell Mr. Garrett to take the gate down. Commissioner Dickerson seconded.

Mr. Sterle showed the Court plats of the land with the road alongside.

After discussion by the Court, it was decided that no action was needed by the Court. Commissioner Will Smith has authority as Commissioner of that precinct to tell Mr. Garrett to remove the gate. The motion and second were withdrawn.

Agenda item #8-Budget Amendment

Judge Leath said that precinct #4 R&B fund is \$11,079.00 over budget. The cash money to cover this is in the precinct funds. More money was received from the U. S. Forest Service than was budgeted.

Commissioner Will Smith said due to some unforeseen incidents in his precinct, he went over budget in some line items. He is asking the Court to amend the budget to cover this.

Judge Leath said he does not agree with amending the budget except in an emergency. He does not know if this would fall under an emergency. There was a lot of rain in January and February and some very large culverts were washed out of the creeks and had to be replaced. The culverts could not be reused. They were basically rotted out. There was also some expense caused by the timber blow down. He said he thinks it would be wise to amend the budget since the money is actually there, but to keep a better control of your budget. You need to keep some money in reserve in your budget just for instances like this. Judge Leath said he is going to recommend a purchase order system later in this meeting partly for this reason.

Commissioner Lynn Smith said this makes him angry. That one person can mess up the system for everybody else. We go through this same thing every year and he does not plan to abstain from voting this year. If there is an emergency, the amendment should come first before the money is spent. If you cannot cover over spending on one line item with funds from another line item, the money should not be spent.

Commissioner Will Smith asked what the other Commissioners would do. If there is rain and the roads and culverts are out, you need rock and culverts and there is no money, do you just tell your

constituents that I don't have the money to fix the roads and culverts? If I spend the money, I am going to get chewed out by the other guys, so you are going to have to deal with them. He said something is wrong here. It is his responsibility as Commissioner of the precinct to take care of the precinct as part of the County. Commissioner Smith said that he does not mind being chewed, but he does not want to be pointed at that he messed up the whole system. He said that he does not mind having a purchase order system.

Commissioner Will Smith moved to amend the budget. Commissioner Dickerson seconded. Commissioners Will Smith, Clark and Dickerson voted for. Commissioner Lynn Smith voted against. Motion carried. See attached exhibit.

Back to agenda item #6-Sterle and Kind Road/Pct. #4
Mike Garrett is now present in Court.

Commissioner Will Smith told Mr. Garrett the decision made by the Court earlier in this meeting.

Mike Garrett and King Davidson said that the boundary in question is not the boundary discussed by the Court.

Commissioner Dickerson moved to schedule a public hearing for the road currently known as "Sterle Road" for October 26, 1998 at 8:30 a.m. Commissioner Will Smith seconded. All voted for. Motion carried. See attached exhibit.

Agenda item #9-Discuss and Possible Action--Purchase Orders

Judge Leath said he sent out memos to the department heads and office holders stating he will be recommending going to a purchase order system and asked for opinions. He said that two of the Commissioners were the only ones he received any information from. It was discussed with the Treasurer and Lynn Lindsey and was told it will not be a tremendous burden on them. It would not go into effect until November 1, 1998.

Commissioner Lynn Smith said that we may have to go to this to get control on the money spending, but he is opposed to it right now.

Commissioner Clark and Dickerson agreed with Commissioner Lynn Smith.

Judge Leath moved to go to a purchase order system. Commissioner Will Smith seconded. Commissioner Will Smith voted for. Commissioners Lynn Smith, Clark and Dickerson voted against. Motion failed.

Commissioner Lynn Smith moved that all line item transfer be made before that line item is over spent. Commissioner Will Smith seconded.

Commissioner Lynn Smith amended his motion to exclude true emergencies, but that line item transfers for emergencies be done at the next regular session of Court. Commissioner Will Smith amended his second. All voted for the amended motion.

Agenda item #10-Line Items Transfers

Commissioner Clark moved to approve the following line item transfers: JP #2, Tax Assessor/Collector, Veteran's Service Officer, County Clerk, District Clerk, County Attorney, Sheriff, R&B #1, R&B #3 and R&B #4. Commissioner Lynn Smith seconded. All voted for. Motion carried. See attached exhibits.

Agenda item #11-Take Action-911 Software Agreement and Maintenance Agreement

Judge Leath moved to pay the \$349.00 for ArcView & Avenue for Windows software support agreement and \$636.00 for maintenance for the 5337 Techjet Color plotter for one year. Commissioner Clark seconded. All voted for. Motion carried. See attached exhibit.

Agenda item #12-Take Action -- Reeves Road

Judge Leath said that we closed that road during the timber blow down and the harvesting of the downed timber for safety reasons primarily. The Forest Service wants it opened back up. He said one group is telling him that the road is safe and another group is telling him it is not safe.

Judge Leath moved to open the road back up after he and possible the Commissioner of that precinct have inspected the road. This is to make sure that no trees are leaning over the road and it is safe to open it back up. Commissioner Will Smith seconded. All voted for. Motion carried.

Agenda item #13-Discuss Road Permits

This item is rescheduled for the next regular session of Court.

Agenda item #14-Take Action--Protection Plan for Pitney Bowes

This item is rescheduled for the next regular session of Court.

Agenda item #15-Take Action--Road Oil For Telephone Road

Commissioner Will Smith asked that this item be put on the agenda for the next regular session of Court.

Agenda item #16-Take Action-TXDOT Surplus Material

Commissioner Will Smith said he feels the surplus material received from TXDOT should be divided by the same percentage as the money is divided, not equally between the precincts.

Commissioner Will Smith moved to change the division of the surplus material received from TXDOT from equal division to 28% for precinct #4, 24% for precincts #1, #2 and #3. Motion died for lack of a second.

Commissioner Will Smith said that he has more road mileage than the other precincts and he thinks it only fair that he receives a greater percentage.

No action taken by the Court.

Agenda item #17-Set Contribution Amount of Stormwater Resolution

Judge Leath said TAC is asking for a contribution from each of the Counties that passes the Resolution against the Environmental Protection Agency's Storm Water Phase II proposed rules. The

contribution rate for Counties with a population of under 10,000 is \$250.00. The Resolution was passed at the last Court session.

Commissioner Clark moved to pay the \$250.00 to TAC. Commissioner Lynn Smith seconded. All voted for. Motion carried. See attached exhibit.

Agenda item #2-Reports

Commissioner Clark moved to accept the reports from the Tax Office, Sheriff's department and the Treasurer. Commissioner Lynn Smith seconded. All voted for. Motion carried. See attached exhibits.

Agenda item #7-Bob Sanford With Temple-Tax Abatement Request
This item is to be tabled.

Court recessed at 11:00 a.m.

Court reconvened at 11:15 a.m.

Agenda item #18-Pay Accounts and Salaries

Commissioner Clark moved to pay accounts and salaries. Commissioner Will Smith seconded. All voted for. Motion carried.

Commissioner Will Smith moved to adjourn. Commissioner Dickerson seconded. Meeting adjourned.

<u><i>Jack Leath</i></u>	COUNTY JUDGE
<u><i>Heidi E. Clark</i></u>	COMMISSIONER PCT. #1
<u><i>Lynn Smith</i></u>	COMMISSIONER PCT. #2
<u><i>Dwight Dickerson</i></u>	COMMISSIONER PCT. #3
<u><i>Will Smith</i></u>	COMMISSIONER PCT. #4

ATTEST:

Jenice McDaniel COUNTY CLERK

Budget Amendment

DATE: Sept 28, 1998

Honorable Commissioners Court of Sabine County:

I would like to request the amendments to my departmental budget:

<u>TO:</u>	<u>FUND</u>	<u>DEPT.</u>	<u>ACCT.</u>	<u>AMT.</u>
FUND	RFB. Revenues	Pct 4	Federal Forest Funds	\$ <u>11,079.00</u>
REVENUE	RFB Disbus	Pct 4	Tires - Trucks	\$ 2304.00
<u>TO:</u>			Culverts	4000.00
			Enamel	4775.00
				<u>\$ 11,079.00</u>

There are no areas in my current budget to reduce in order to fund the above mentioned items.

Approved Commissioners Court



Department Head



Attest County Clerk

NOTE: Be sure to review other departments within the fund for areas where funds could be used to make these amendments. Line-item transfers are always preferred over budget amendments.

Vol EE Pg 307

ROAD & BRIDGE FUND
REVENUES AND EXPENDITURES
FOR THE PERIOD ENDING 09-25-98

	Budget Amount	Actual Amount	Variance Amount	Var %
TOTAL VEHICLE/EQUIPMENT EXP	17,481	25,199	7,718	44.2
MAINTENANCE MATERIALS				
CULVERTS	3,000	7,000	4,000	133.3
CULVERTS 3RD PARTY	1	3,228	3,227	***
BRIDGE MATERIAL	1,000	1,187	187	18.7+
BRIDGE MATERIAL 3RD PARTY	1	0	-1	100.0
GRAVEL	26,200	30,975	4,775	18.2
ROAD OIL/ASPHALT	20,996	18,334	-2,662	12.7-
ROAD OIL 3RD PARTY	1	0	-1	100.0
ROAD BASE 3RD PARTY	1	0	-1	100.0
TOTAL MAINTENANCE MATERIALS	51,200	60,724	9,524	18.6
UTILITIES				
TELEPHONE	1,500	1,905	405	27.0+
UTILITIES	1,656	542	-1,114	67.3-
TOTAL UTILITIES	3,156	2,447	-709	22.5
INSURANCE				
GENERAL LIABILITY	1,500	1,420	-80	5.3-
AUTO LIABILITY	1,300	602	-698	53.7-
PUBLIC OFFICIAL LIABILITY	500	510	10	2.0+
AUTO PHYSICAL DAMAGE	1,200	885	-315	26.3-
BUILDING & PROPERTY	500	395	-105	21.0-
TOTAL INSURANCE	5,000	3,812	-1,188	23.8
OTHER OPERATING EXPENSE				
CAPITAL EXPENSE	1	12,889	12,888	***
OFFICE SUPPLIES & PRINTING	100	65	-35	35.0-
PHYSICALS	100	0	-100	100.0-
RADIO COMMUNICATIONS	300	246	-54	18.0-
VEHICLE & EQUIPMENT LEASE	44,175	38,758	-5,417	12.3-
CONTINUING EDUCATION	400	245	-155	38.8-
TRAVEL & LODGING	1,000	699	-301	30.1-
BONDS	30	0	-30	100.0-
MISCELLANEOUS SUPPLIES	1,200	2,927	1,727	143.9+
TOTAL OTHER OPERATING EXP	47,306	55,829	8,523	18.0
TRANSFERS TO R & B SPECIAL				
GRADALL/STEAM CLEANER	3,000	3,000	0	0.0
R & B SPECIAL R3	7,500	7,500	0	0.0
TOTAL TRANSFERS	10,500	10,500	0	0.0

Vol EE Pg 308

ROAD & BRIDGE FUND
REVENUES AND EXPENDITURES
FOR THE PERIOD ENDING 09-25-98

	Budget Amount	Actual Amount	Variance Amount	Var %
REVENUES				
CARRYOVER FROM PRIOR YEAR	58,000	0	-58,000	100.0
FEDERAL FOREST FUNDS	27,000	65,262	38,262	141.7
LATERAL ROADS	5,400	5,711	311	5.8
LICENSE RENEWAL	121,500	130,037	8,537	7.0
ROAD BASE REIMBURSEMENT	1	1,621	1,620	***
BRIDGE MATERIAL REIMBURSEMENT	1	0	-1	100.0
ROAD OIL REIMBURSEMENT	1	0	-1	100.0
CULVERT REIMBURSEMENT	1	4,551	4,550	***
CAPITAL EXPENSE REIMBURSED	1	19,500	19,499	***
BUREAU OF LAND MANAGEMENT	2,600	2,724	124	4.8
INTEREST INCOME	3,500	3,602	102	2.9
OTHER REVENUES	7,501	8,078	577	7.7
TOTAL REVENUES	225,506	241,086	15,580	6.9
EXPENDITURES				
PERSONAL SERVICE				
ELECTED OFFICIAL	25,600	24,533	-1,067	800 4.2
ASSISTANTS ^{900.}	43,231	42,690	-541	800 1.3
TOTAL PERSONAL SERVICE	68,831	67,223	-1,608	2.3
BENEFITS				
SOCIAL SECURITY ⁴⁰⁰	5,882	4,938	-944	500 16.0
GROUP MEDICAL INSURANCE	9,550	8,957	-593	6.2
RETIREMENT	2,900	1,609	-1,291	44.5
WORKMEN'S COMP.	3,000	2,039	-961	32.0
UNEMPLOYMENT	700	412	-288	41.1
TOTAL BENEFITS	22,032	17,955	-4,077	18.5
VEHICLE/EQUIPMENT				
FUEL - GASOLINE	2,500	2,996	604	496 19.8
FUEL DIESEL	6,256	6,134	656	-222 2.0
OIL - TRUCKS	200	50	-127	-150 75.0
OIL - EQUIPMENT	400	531	131	32.8
MISC LUBRICANTS - TRUCKS	100	12	-88	88.0
MISC LUBRICANTS - EQUIPMENT	100	49	-51	51.0
LABOR REPAIR - TRUCK	800	1,967	1,167	145.9
LABOR REPAIR - GRADERS	500	1,298	798	159.6
MAINTENANCE & REPAIR - OTHER	1,400	1,408	8	0.6
PARTS - TRUCK	1,400	2,855	1523	1155 103.9
PARTS - GRADERS	125	1,040	915	732.0
PARTS - OTHER EQUIPMENT	1,700	650	-1,050	61.8
TIRES - TRUCKS	1,000	3,180	2,180	218.9
TIRES - EQUIPMENT	1,000	3,020	2,020	202.0

Vol EE Pg 309

Adding 601

PUBLIC NOTICE

A public hearing is scheduled for October 26, 1998 by the Sabine County Commissioners' Court to hear testimony for and against the boundary lines of the road currently known as "Sterle Road".

Time, date and location as follows:
Sabine County Courthouse, second floor
Commissioners' Courtroom
October 26, 1998 at 8:30 a.m.

All interested parties are requested to fill out a public participation form to give testimony.

Janice McDaniel
Clerk, Commissioners' Court
Sabine County, Texas

Vol EE Pg 310



Line-item transfer

DATE: September 28, 1998

Honorable Commissioners Court of Sabine County:

I submit to you for your consideration the following line-item transfers:

	<u>FUND</u>	<u>DEPT.</u>	<u>ACCT.</u>	<u>AMT.</u>
From:	General	JP #2	Retirement	215.00
	General	JP #2	Unemployment	16.00
	General	JP #2	Office Supplies	949.00
	General	JP #2	Telephone	120.00
	General	JP #2	School	418.00
	General	JP #2	Bonds	50.00
	General	JP #2	Petit Jury	428.00
	To:	General	JP #3	Group Medical Insurance

Reason: To balance budget

Department Head

Approved Commissioners Court

Janice McDaniel

Attest County Clerk

Vol EE Pg 311

LINE-ITEM TRANSFERS

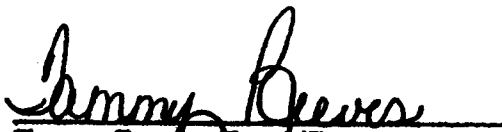
September 23, 1998

HONORABLE Commissioners Court of Sabine County:

I submit to you for your consideration the following line-item transfers:

From:	General Fund	Tax A/C	Other - School	\$ 501.00
	General Fund	Tax A/C	Other - School	\$ 500.00
	General Fund	Tax A/C	Other - School	\$ 485.00
	General Fund	Tax A/C	Other - School	\$ 236.00
	General Fund	Tax A/C	Other - School	\$ 121.00
	General Fund	Tax A/C	Other - School	\$ 22.00
	General Fund	Tax A/C	Computer Lease	\$3,128.00
	General Fund	Tax A/C	Computer Lease	\$1,527.00

To:	General Fund	Tax A/C	Tax Rolls	\$ 501.00
	General Fund	Tax A/C	Office Supplies	\$ 500.00
	General Fund	Tax A/C	Telephone	\$ 485.00
	General Fund	Tax A/C	Adv. & Legal Notices	\$ 236.00
	General Fund	Tax A/C	Summer Help	\$ 121.00
	General Fund	Tax A/C	Temporary Help	\$ 22.00
	General Fund	Tax A/C	Tax Appraisal Dist.	\$3,128.00
	General Fund	Tax A/C	Group Medical Insur.	\$1,527.00


Tammy Reeves, Tax A/C
Department Head

Approved: Commissioners Court


Attest: County Clerk

Vol EE Pg 312

Line-item transfer


DATE: September 28, 1998

Honorable Commissioners Court of Sabine County:

I submit to you for your consideration the following line-item transfers:

	<u>FUND</u>	<u>DEPT.</u>	<u>ACCT.</u>	<u>AMT.</u>
From:	General	Veteran's Office	Telephone	120.00
To:	General	Veteran's Office	School	120.00

Reason: Go to fall conference October 5, 1998 thru October 10, 1998.


Department Head

Approved Commissioners Court


Attest County Clerk

Vol EE Pg 313

Line-item transfer

DATE: Sept. 28, 1998

Honorable Commissioners Court of Sabine County:

I submit to you for your consideration the following line-item transfers:

	<u>FUND</u>	<u>DEPT.</u>	<u>ACCT.</u>	<u>AMT.</u>
	General	County Clerk	Gr. Med. Insurance	\$ 957.00
	"	" "	Printing	800.00
From:	"	" "	Records Rebind.	3,000.00
	"	" "	School-Cont. Ed.	1,500.00
	"	" "	Furn.& Office Equip.	1,463.00
	"	" "	Election Officials	3,800.00
			Total	\$11,520.00
To:	General	County Clerk	Business Records(Rec)	\$ 434.00
	"	" "	Telephone	936.00
	"	" "	Computer Maint.	8,130.00
Reason:	"	" "	Ballots	100.00
			Election Supplies	1,920.00
			Total	\$11,520.00

Jamie McDaniel
Department Head

Jamie McDaniel
Attest County Clerk

Approved Commissioners Court

Vol EE Pg 34

Line-item transfer

DATE: September 28, 1998

Honorable Commissioners Court of Sabine County:

I submit to you for your consideration the following line-item transfers:

	<u>FUND</u>	<u>DEPT.</u>	<u>ACCT.</u>	<u>AMT.</u>
From:	General	District Clerk	Unemployment	25.00
To:	General	District Clerk	Telephone	25.00

Reason: To balance budget


Department Head

Approved Commissioners Court


Attest County Clerk

Vol EE Pg 315

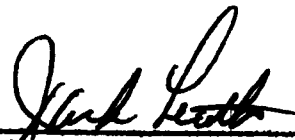
LINE-ITEM TRANSFER

DATE: SEPTEMBER 25, 1998

HONORABLE COMMISSIONERS COURT OF SABINE COUNTY

I SUBMIT TO YOU FOR YOUR CONSIDERATION THE FOLLOWING LINE-ITEM TRANSFERS:

	<u>FUND</u>	<u>DEPT.</u>	<u>ACCT.</u>	<u>AMT.</u>
FROM:	BONDS	CNTY ATTY.		50.00
	TELEPHONE	CNTY ATTY		157.00
TO:	CONT. EDUCATION	CNTY ATTY		207.00
	SEMINARS			


DEPT. HEAD


ATTEST COUNTY CLERK

APPROVED COMMISSIONERS COURT

Vol EE Pg 316

LINE-ITEM TRANSFERS

Date: September 28, 1998

Honorable Commissioners Court of Sabine County:

I submit to you for your consideration the following line-item transfers:

	FUND	DEPT.	ACCT.	AMT.
From:	Road & Bridge	Pct. #1	Bridge Material	\$4,500.00
	Road & Bridge	Pct. #1	Road Oil/Asphalt	\$4,000.00
	Road & Bridge	Pct. #1	County Barn Repairs	\$1,500.00
	Road & Bridge	Pct. #1	Workers Compensation	\$ 800.00
	Road & Bridge	Pct. #1	Fuel - Diesel	\$1,500.00
	Road & Bridge	Pct. #1	Labor Repair - Truck	\$1,570.00
	Road & Bridge	Pct. #1	Tires - Equipment	\$ 225.00
	Road & Bridge	Pct. #1	Auto Liability	\$ 345.00
To:	Road & Bridge	Pct. #1	Parts - Graders	\$ 250.00
	Road & Bridge	Pct. #1	Parts - Other Equipment	\$ 249.00
	Road & Bridge	Pct. #1	Gravel	\$5,510.00
	Road & Bridge	Pct. #1	Utilities	\$ 210.00
	Road & Bridge	Pct. #1	General Liability	\$ 510.00
	Road & Bridge	Pct. #1	Building & Property	\$ 45.00
	Road & Bridge	Pct. #1	Radio Communications	\$ 825.00
	Road & Bridge	Pct. #1	Miscellaneous Supplies	\$ 600.00
	Road & Bridge	Pct. #1	Culverts - 3rd Party	\$1,575.00
	Road & Bridge	Pct. #1	Road Base - 3rd Party	\$4,145.00
	Road & Bridge	Pct. #1	Travel & Lodging	\$ 225.00
	Road & Bridge	Pct. #1	Fuel - Gasoline	\$ 296.00

Keith C. Clark

 Department Head

Jessie M. Daniel

 Attest County Clerk

 Approved Commissioners Court

Vol EE Pg 317

Line-item transfer

DATE: September 28, 1998

Honorable Commissioners Court of Sabine County:

I submit to you for your consideration the following line-item transfers:

	<u>FUNO</u>	<u>DEPT.</u>	<u>ACCT.</u>	<u>AMT.</u>
From:	Road & Bridge	Precinct #3	Group Insurance	3,080.00
	Road & Bridge	Precinct #3	Tires-Trucks	1,198.00
To:	Road & Bridge	Precinct #3	Gravel	3,080.00
	Road & Bridge	Precinct #3	Labor Repair-Grader	606.00
	Road & Bridge	Precinct #3	Parts-Grader	257.00
	Road & Bridge	Precinct #3	Culvert-3rd Party	248.00
	Road & Bridge	Precinct #3	Telephone	26.00
	Road & Bridge	Precinct #3	Public Off. Lib.	60.00
Reason:	Road & Bridge	Precinct #3	Misc. Supplies	1.00

To balance budget


Department Head

Approved Commissioners Court


Attest County Clerk

Vol EE Pg 318

**THE COMMISSIONERS COURT
SABINE COUNTY
Line Item / Inter Fund Transfer**

Date: September 28, 1998

Honorable Commissioners Court of Sabine County:

I submit to you for your consideration the following line-item transfers:

	<u>FUND</u>	<u>DEPT</u>	<u>ACCT.</u>	<u>AMOUNT</u>
From:	R&B	Pct 4	Social Security	\$ 500.00
			Oil-Trucks	127.00
			Misc-Lub. Trucks	88.00
			Misc-Lub. Equip.	51.00
			Parts-Other Equip.	1050.00
			Utilities	1114.00
			General Lib.	80.00
			Auto Lib.	698.00
			Auto Phy. Damage	315.00
			Building & Property	105.00
			Office Supplies	35.00
			Physicals	100.00
			Radio Communication	54.00
			Vehicle & Equipment	5417.00
			Continuing Ed.	155.00
			Travel & Lodge	301.00
			Bonds	30.00
			Road Oil/Asphalt	2134.00
				\$ 12,354.00
 To:	 R&B	 Pct 4	 Assistants	 \$ 800.00
			Fuel-Gasoline	604.00
			Fuel-Diesel	656.00
			Oil-Equip.	131.00
			Labor Repair-Truck	1167.00
			Labor Repair-Grader	798.00
			Main. & Repair-other	8.00
			Parts-Truck	1583.00
			Parts-Graders	915.00
			Misc. Supplies	1727.00
			Tires-Equip.	2762.00
			Bridge Material	187.00
			Telephone	405.00
			Public Official Lib.	10.00
			Tires-Truck	601.00
				\$ 12,354.00



Department Head

Attest: 

Janice McDaniel, County Clerk

Approved in Commissioners Court
September 28, 1998

Vol EE Pg 319

LINE ITEM TRANSFER

HONORABLE COMMISSIONERS COURT OF SABINE COUNTY:

I SUBMIT TO YOU FOR CONSIDERATION THE FOLLOWING LINE ITEM TRANSFERS WITHIN THE SABINE COUNTY SHERIFF'S OFFICE 1997-98 OPERATING BUDGET:

	AMOUNT:
FROM: DEPUTIES	1,400.00
FROM: OFFICE SUPPLIES	750.00
FROM: PRINTING	800.00
FROM: BONDS	350.00
FROM: FUEL AND OIL	850.00
FROM: DRUG EDUCATION MATERIAL	1,569.00
FROM: COMPUTER LEASE	1,200.00
FROM: TELETYPE	165.00
FROM: DRUG DOG	425.00
FROM: SECRETARY	12,877.00
FROM: GROUP MEDICAL INSURANCE	5,219.00
FROM: RETIREMENT	4,500.00
FROM: UNEMPLOYMENT	1,763.00
FROM: GENERAL LIABILITY	377.00
FROM: LAW ENFORCEMENT LIABILITY	2,303.00
FROM: AUTO LIABILITY	1,632.00
FROM: AUTO PHYSICAL DAMAGE	191.00
FROM: PUBLIC OFFICIAL LIABILITY	3.00
FROM: BUILDING AND PROPERTY	795.00
TOTAL OF ABOVE ITEMS	\$37,249.00

TO: JAILER DISPATCHER	7,170.00
TO: WORKMAN'S COMP.	1,358.00
TO: JANITORIAL SUPPLIES	2,420.00
TO: POSTAGE	102.00
TO: TELEPHONE	1,727.00
TO: TRAVEL AND LODGING	449.00
TO: UTILITIES	12.00
TO: REPAIRS AND MAINTENANCE	3,304.24
TO: AUTO MAINTENANCE	1,671.50
TO: SCHOOL REGISTRATION	636.00
TO: RADIO MAINTENANCE EXPENSE	157.00
TO: EQUIPMENT	6,122.00
TO: AUTOMOBILES	3,100.00
TO: UNIFORMS	797.00
TO: PRISONER'S BOARD BILL	2,150.00
TO: MEDICAL AND DENTAL	6,056.00
TOTAL OF ABOVE ITEMS	\$37,231.74



TOM PHILIPS, SHERIFF

VOIEE PG 320

**ESRI Desktop Sales Center
Quotation**

TO: JANICE WEBB
ORG: SABINE COUNTY CUST.# 105937
HWY 87 N CENTRAL APPAISAL DIST BLDG.
HEMPHILL TX 75948
PH: 409-787-3570
FAX: 409-787-2044

Date: 8/20/98
Quotation #: Q-800-50519
ESRI Sales Rep Contact:
Mary Polk

<u>Qty</u>	<u>Product</u>	<u>Price</u>
1	Tech. Support/ArcView & Avenue for Windows	\$349.00

Cost before tax and shipping: \$349.00

PLEASE SUBMIT YOUR ORDER TO THE ATTENTION OF MARY POLK

FAX ORDERS TO 909-307-3049

Please include this confirmation number as part of your order form or attach a copy of this form to your purchase order. The quoted prices do not include applicable taxes, if any. If your organization is tax exempt, please attach a copy of your tax exemption certificate with your order.

LICENSING: ArcView, MapObjects, Spatial and Network Analyst come with "shrink wrapped" license agreements. Certain ESRI products may require signed license agreements. Some non-ESRI data products also require signed license agreements. This means, that the data will not be shipped until the signed license agreement has been returned to the data vendor. If applicable, the appropriate license agreement will be mailed to you when you place the order.

Environmental Systems Research Institute, Inc.
380 New York Street, Redlands, CA 92373
800-447-9778

(This quote is valid for 30 days)

Vol EE Pg 321



August 20, 1998

JANICE WEBB
911 ADMINISTRATION
SABINE COUNTY
HWY 87 N CENTRAL APPAISAL DIST BLDG
HEMPHILL TX 75948

Dear Janice,

Thank you for calling ESRI regarding our family of software and data solutions for Geographic Information Systems (GIS). The enclosed information packet should provide an overview of the information we discussed.

ESRI offers a comprehensive and scalable product line including Atlas GIS[®], ArcView GIS[®], ArcView Extensions, Data Automation Kit[®], PC ARC/INFO[®], ARC/INFO[®], MapObjects[®], and Internet GIS solutions. Also, note that while most of our software includes detailed sample data, ESRI has access to a wealth of additional GIS data sets for very specific applications. From packaged nationwide demographic data sets for market analysis to satellite imagery of remote areas, ESRI's ArcData[™] program offers hundreds of data sets for most GIS applications.

ESRI also has several programs to support your use of GIS software. ESRI and its certified instructors offer training at hundreds of sites across the United States, including training on the World-Wide Web. Furthermore, ESRI can provide hardware to support your GIS needs, including special offers of ESRI software bundled with hardware. Finally, we have a number of options for providing both short and long-term technical support services while using our software.

Again, I would like to thank you for calling ESRI. After reviewing the included materials in this literature packet, please feel free to call me at 1-800-GIS-XPRT (447-9778). You may also wish to visit our web site at www.esri.com for further detailed information about ESRI, our products, and what GIS can do for you.

Sincerely,

Mary Polk

Mary Polk
ESRI - Sales

Enclosures: GIS Store Catalog
Quote

Vol EE Pg 322



Deep East Texas Council of Governments and Economic Development District
274 East Lamar Street • Jasper, Texas 75951 • 409/384-5704 • FAX 409/384-5390

WALTER G. DIGGLES
Executive Director

September 23, 1998

Ms. Cheryl Hartwell
CalComp
2411 West La Palma Avenue
P.O. Box 3250
Anaheim, CA 92883-3250

Re: CalComp Service Agreement, Contract # 272240
Customer # 348977, 5336 Techjet Color, Serial # 9526704108

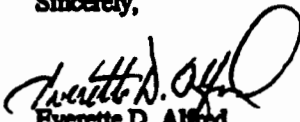
Dear Ms. Hartwell:

Enclosed is the above-referenced Service Agreement for the 5337 Techjet Color plotter. This equipment is no longer owned by our organization, as it has been sold to Sabine County, Texas. The contact name and address of the new owner is as follows:

Sabine County
ATTN: Judge Jack Leath
P.O. Box 716
Hemphill, TX 75948

So that Sabine County may make a decision on whether or not to purchase a service agreement, you may forward one to them at the above address. If you have any questions, please give me a call. Thank you.

Sincerely,


Everett D. Alfred
9-1-1 Director

EDA/bes
Enclosure

Cc: Hon. Jack Leath, Sabine County Judge ✓
Walter G. Diggles, Executive Director

Vol EE Pg. 323





CALCOMP SERVICE AGREEMENT AMENDMENT

2411 West La Palma Avenue
P.O. BOX 3250
Anaheim, CA 92803-3250

CONTRACT NUMBER 272240	REF. S.O. NUMBER	DATE PREPARED 09-14-98
----------------------------------	------------------	----------------------------------

BILL TO ADDRESS	CUSTOMER NUMBER 348977	INSTALLATION SITE ADDRESS	CUSTOMER NUMBER 348977
------------------------	----------------------------------	----------------------------------	----------------------------------

DEEP EAST TEXAS 274 E LAMAR JASPER, TX 75951	DEEP EAST TEXAS 274 E LAMAR JASPER, TX 75951
--	--

CONTACT EVERETTE ALFRED, DIRECTOR, 911/CUD	TELEPHONE 409/384-5704	CONTACT JIMMY HENSARLING	TELEPHONE 409/384-5704
--	----------------------------------	------------------------------------	----------------------------------

CONTRACT TYPE PD Required	PAYMENT TERMS NET 30	AMEND. NO. 3	REASON RENEWAL QUOTE
-------------------------------------	--------------------------------	------------------------	--------------------------------

PRODUCT INFORMATION

ITEM	QTY.	MODEL	DESCRIPTION	SERIAL NUMBER	MONTHLY RATE	TOTAL AMOUNT
1	1	5336	5336 TECHJET COLOR *****TO EXECUTE THIS AGREEMENT: ***** -SIGN AGREEMENT OR ATTACH PD -MAIL OR FAX TO 714/821-2341 CREDITCARDS ACCEPTED (VISA/MC/AMEX) CARD# EXP DATE: CARDHOLDER: NON-CONTRACT RATES: \$160.00/HR PLUS PARTS \$ THANK YOU!!!	P526704108		636.00
SERVICE TOTAL						636.00
TAXES						Applicable

FINAL NOTICE

MILES FROM SERV. OFFICE/SURCHARGE 0 - 75	EFFECTIVE DATE 09-15-98	EXPIRATION DATE 09-14-99	TOTAL
--	-----------------------------------	------------------------------------	-------

SERVICE HOURS 8-5 M-F	BILLING CYCLE Annually	TAXABLE	TAX EXEMPTION NUMBER	PREPARED BY: 64222	OFFICE: 64222
---------------------------------	----------------------------------	---------	----------------------	------------------------------	-------------------------

EXECUTED AGREEMENT IS SUBJECT TO THE TERMS AND CONDITIONS ON THE REVERSE SIDE. SERVICE RATES ARE VALID FOR A PERIOD OF SIXTY (60) DAYS FROM THE DATE QUOTATION IS PREPARED.

This Agreement, after execution by the Offeror, is subject to acceptance or rejection by CalComp in Anaheim, California. If notice of rejection of this offer is not communicated to Offeror within 15 days of receipt by CalComp in Anaheim, the agreement will be deemed accepted.

OFFERED BY: **DEEP EAST TEXAS
274 E LAMAR
JASPER, TX 75951**

Vol EE Pg 324

SIGNATURE _____ DATE _____ TYPE OR PRINT NAME AND TITLE _____

PURCHASE ORDER NUMBER (IF APPLICABLE) _____

F0025-024(08/98)

RETURN BALANCE OF CONTRACT TO CALCOMP
ORIGINAL CUSTOMER COPY

RESOLUTION

Resolution regarding the County's Participation in the Storm Water Phase II Coalition

WHEREAS, the United States Environmental Protection Agency has proposed Phase II Storm Water Discharge Regulations and the proposed regulations have been published in the Federal Register; and

WHEREAS, during the public comment period which ended April 9, 1998, the Texas Association of Counties submitted comments to the EPA opposing the adoption of the proposed regulations; and

WHEREAS, the proposed regulations, if adopted in current form, will have enormous economic consequences for many counties and require local governments to conduct the proposed federal regulatory program; and

WHEREAS, the 38 counties automatically designated in the proposed rules will be required to obtain permits for storm water discharges from "small municipal storm sewer systems", also known as MS4's; and

WHEREAS, in these 38 counties a drainage ditch in the county right-of-way will be considered an MS4 and therefore the county will be required to develop and enforce the storm water management program; and

WHEREAS, every county in the State of Texas which engages in construction activities of at least one acre (such as clearing, grading, and excavating) will be required to obtain permits for discharges from such sites; and

WHEREAS, Texas counties lack the authority to enact ordinances and implement all of the regulatory requirements that Phase II requires; and

WHEREAS, a Texas County Storm Water Phase II Coalition has been formed to provide an organized county initiative in opposition to the proposed rules; and

WHEREAS, the Coalition will work with State and Federal leaders to make Phase II a more workable and affordable program for counties to implement; and

WHEREAS, the Coalition will be solely funded by counties who which to participate in the efforts of this Coalition; and

WHEREAS, the Texas Association of Counties will serve as the facilitator in this project and will collect and deposit all county contributions into the Coalition fund; and

WHEREAS, all expenditures from this fund will be authorized and approved by the Coalition Public Official's Steering Committee, which will be comprised of county officials.

NOW, THEREFORE, BE IT RESOLVED, that Sabine County opposes the adoption and implementation of the EPA's Phase II Storm Water Discharge Regulations as proposed; and

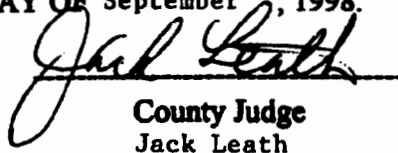
BE IT FURTHER RESOLVED, that Sabine County supports the efforts of the Texas County Storm Water Phase II Coalition; and

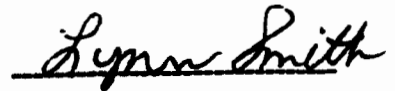
BE IT FINALLY RESOLVED, that Sabine County agrees to a financial contribution to the Texas Association of Counties in the amount of \$ 250.00 to support the efforts of the Coalition

APPROVED THIS THE 14 DAY OF September, 1998.



Commissioner Pct. 1
Keith Clark


County Judge
Jack Leath



Commissioner Pct. 2
Lynn Smith



Commissioner Pct. 3
Doyle Dickerson

Vol EE Pg 325



Commissioner Pct. 4
Will Smith

TEXAS ASSOCIATION OF COUNTIES

RECEIVED

C/E

1204 San Antonio • Austin, TX 78701

P.O. Box 2131 • Austin, TX 78768-2131



Sam D. Seale • Executive Director

August 27, 1998

Dear Judge,

The Texas Association of Counties, Executive Committee has agreed to serve as an umbrella organization for the Texas Counties Storm Water Coalition. The Coalition was formed after several county officials expressed concerns over the Environmental Protection Agency's Storm Water Phase II proposed rules and the impact those rules will have on every Texas county.

In July of this year an Interim Steering Committee was formed to begin the process of organizing the coalition. At that time I was selected interim chairman of the coalition and I currently serve with Judge Jim Sagebiel, Guadalupe County, Judge Horace Groff, Grayson County, Commissioner Richard Cortese, Bell County, Commissioner Danny Scheel, Comal County, Commissioner Mike Heiligenstein, Williamson County, and Commissioner Mack Dobbs, Parker County. The goal of the Coalition is to provide an organized county initiative in opposition to the proposed rules. This goal will only be accomplished if county officials voice their concerns to state and federal elected officials, as well as the regulatory agencies involved with this program.

Approximately 80 Texas cities have formed a similar coalition in opposition to the proposed rules. We are hopeful that the combined efforts of the two Texas coalitions will provide initiatives for a more workable solution other than the rules as currently proposed. We see this as a pro-active approach instead of a wait and see approach.

Should the rules be adopted as currently proposed, the economic impact on counties could be enormous. The Texas Association of Counties has incurred all the expenses in opposing the rules, to this point. The temporary steering committee feels that due to the possible enormous monetary impact on counties, the coalition needs to be funded solely by the counties who wish to participate in this undertaking. These funds will be used to support the efforts of the coalition. The Texas Association of Counties will continue to provide staff and resources to support the coalition.

Counties who wish to join the coalition are encourage to adopt the enclosed resolution and remit a check payable to the Texas Association of Counties Storm Water Coalition Fund, based on the following rate structure. The check and resolution should be returned to the Texas Association of Counties, 1204 San Antonio, Austin, Texas 78701, Attn: Sue Glover.

AMOUNT	\$15,000	\$12,000	\$5,000	\$2,000	\$750	\$500	\$250
1990 County Population	Over 500,000	200,000	100,000	50,000	25,000	10,000	Below 10,000
	(excluding Harris County)	500,000	200,000	100,000	50,000	25,000	

Vol EE Pg 326

(512)-478-8753 • 1-800-456-5974 • FAX (512)-478-0519

A meeting of the coalition will be held during the County Judges and Commissioner's Conference in Fort Worth, at the end of September. The meeting will be an organizational meeting to set strategies, adopt a budget and select permanent steering committee members.

This issue needs your immediate attention. Please feel free to call me if you have any questions. My number in Victoria is 512-575-4558.

Sincerely,



Helen R. Walker
Victoria County Judge
Interim Chairman

CC: County Commissioners

Vol EE Pg. 327

RESOLUTION

Resolution regarding the County's Participation in the Storm Water Phase II Coalition

WHEREAS, the United States Environmental Protection Agency has proposed Phase II Storm Water Discharge Regulations and the proposed regulations have been published in the Federal Register, and

WHEREAS, during the public comment period which ended April 9, 1998, the Texas Association of Counties submitted comments to the EPA opposing the adoption of the proposed regulations; and

WHEREAS, the proposed regulations, if adopted in current form, will have enormous economic consequences for many counties and require local governments to conduct the proposed federal regulatory program; and

WHEREAS, the 38 counties automatically designated in the proposed rules will be required to obtain permits for storm water discharges from "small municipal storm sewer systems", also known as MS4's; and

WHEREAS, in these 38 counties a drainage ditch in the county right-of-way will be considered an MS4 and therefore the county will be required to develop and enforce the storm water management program; and

WHEREAS, every county in the State of Texas which engages in construction activities of at least one acre (such as clearing, grading, and excavating) will be required to obtain permits for discharges from such sites; and

WHEREAS, Texas counties lack the authority to enact ordinances and implement all of the regulatory requirements that Phase II requires; and

WHEREAS, a Texas County Storm Water Phase II Coalition has been formed to provide an organized county initiative in opposition to the proposed rules; and

WHEREAS, the Coalition will work with State and Federal leaders to make Phase II a more workable and affordable program for counties to implement; and

WHEREAS, the Coalition will be solely funded by counties who which to participate in the efforts of this Coalition; and

WHEREAS, the Texas Association of Counties will serve as the facilitator in this project and will collect and deposit all county contributions into the Coalition fund; and

WHEREAS, all expenditures from this fund will be authorized and approved by the Coalition Public Official's Steering Committee, which will be comprised of county officials.

NOW, THEREFORE, BE IT RESOLVED, that _____ County opposes the adoption and implementation of the EPA's Phase II Storm Water Discharge Regulations as proposed; and

BE IT FURTHER RESOLVED, that _____ County supports the efforts of the Texas County Storm Water Phase II Coalition; and

BE IT FINALLY RESOLVED, that _____ County agrees to a financial contribution to the Texas Association of Counties in the amount of \$ _____ to support the efforts of the Coalition

APPROVED THIS THE _____ DAY OF _____, 1998.

County Judge

Commissioner Pct. 1

Commissioner Pct. 2

Commissioner Pct. 3

Vol EE Pg 328

Commissioner Pct. 4

TEXAS ASSOCIATION OF COUNTIES

1204 San Antonio • Austin, TX 78701

P.O. Box 2131 • Austin, TX 78768-2131

Sam D. Seale • Executive Director



August 27, 1998

Dear Judge and Commissioners:

Congress has recessed for the month of August and members will be back home during the upcoming holiday. Many of the members will be visiting with their local county officials during the recess. We would kindly request that you pass on the following concerns regarding the Storm Water Phase II proposed rules.

As you are aware in January the Environmental Protection Agency (EPA) issued Storm Water Phase II proposed rules. The rules as proposed will impact every county in Texas. The Texas Association of Counties legislative staff, with the assistance of the Bickerstaff, Heath, Smiley, Pollan, Kever & McDaniel law firm, submitted comments on behalf of Texas counties.

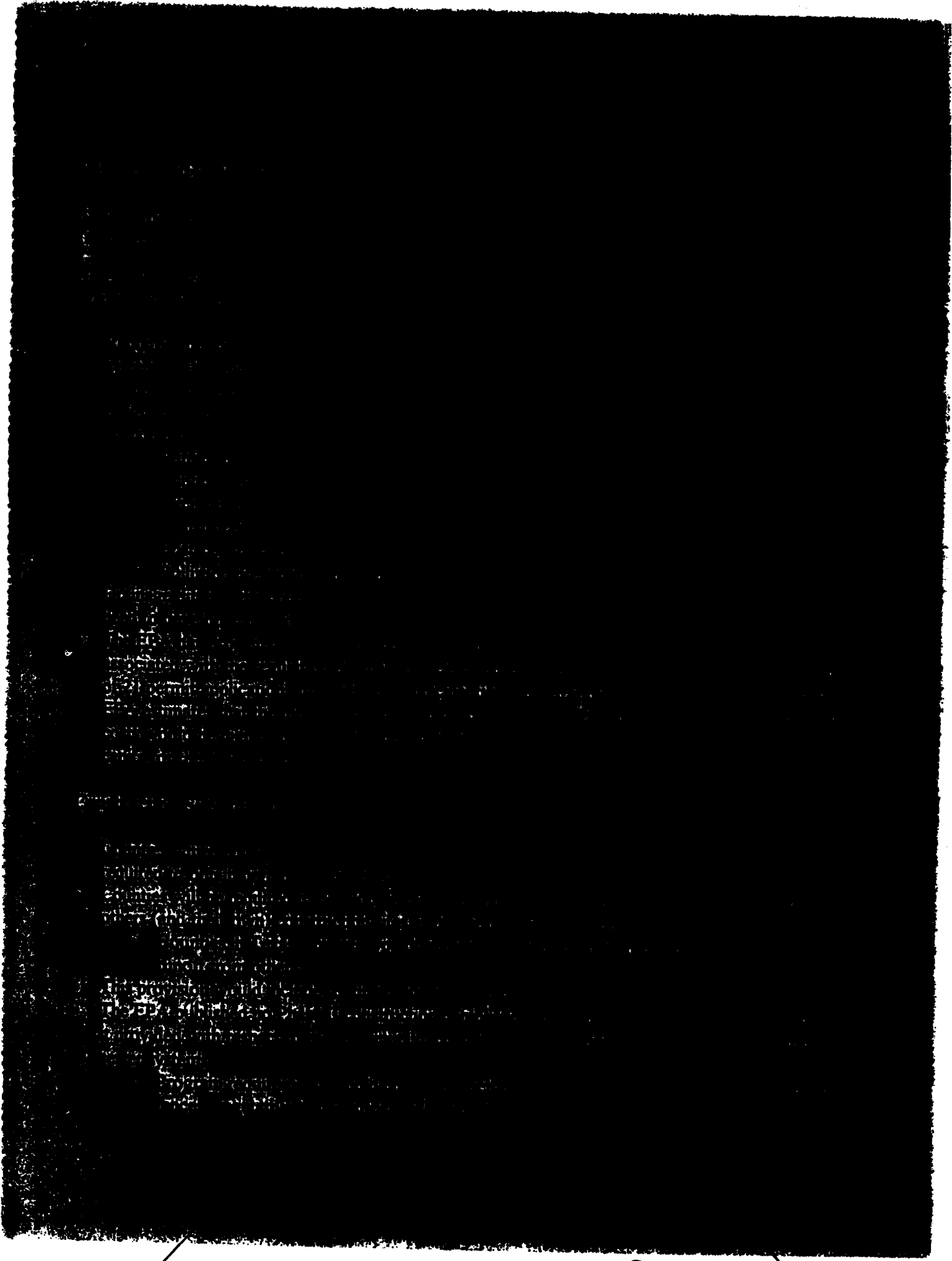
Phase II seeks to expand on the existing storm water program, Phase I, which was implemented to reduce polluted runoff from major industrial facilities, large and medium city storm sewers, and construction sites that disturb five or more acres of land. Phase II picks up where Phase I left off, broadening the scope of EPA regulation of storm water discharges to include smaller municipalities and counties, as well as construction sites that disturb at least one acre of land.

Thirty-eight counties have been specifically identified in the proposed regulations as owners of small municipal separate storm sewer systems (MS4s). We anticipate that several additional counties will fall within the scope of EPA's automatic designation as "urbanized areas" following the census in 2000. Under the proposed rule, all regulated small municipal separate sewer systems must develop, implement, and enforce a storm water management program designed to reduce the discharge of pollutants to the "maximum extent practicable". As we understand the proposed rules a drainage ditch in the county could be considered a small municipal separate storm sewer system.

Another provision which will effect every Texas county is the proposal to regulate construction sites of greater than one acre. Accordingly, counties which engage in construction activities (such as clearing, grading, and excavating) could be required to obtain permits for discharges from such sites.

The proposed rules are an example of another federal unfunded mandate on Texas counties. The economic impact on county budgets could be enormous. The EPA has projected "per capita" costs, for implementation of the six minimum control measures associated with the regulation of small municipal separate storm sewer systems, is \$2.67. EPA does acknowledge that per capita costs would be higher for Phase II municipalities. At this point we believe an estimate of \$5.00 per capita for Texas counties is a very conservative number.

Vol EE Pg 329



Handwritten signature or initials.



...the ... of ...
...the ... of ...
...the ... of ...

...the ... of ...
...the ... of ...
...the ... of ...

...the ... of ...
...the ... of ...
...the ... of ...

...the ... of ...
...the ... of ...
...the ... of ...

...the ... of ...
...the ... of ...
...the ... of ...

...the ... of ...
...the ... of ...
...the ... of ...

...the ... of ...
...the ... of ...
...the ... of ...

Texas Counties Lack of Regulatory Authority

- Texas counties possess only such powers as are conferred by the state constitution or state statute.
- Texas counties lack the authority to enact the ordinances and implement all of the regulatory requirements that Phase II requires.

Phase II Violates the Tenth Amendment

- Phase II requires county owners/operators of small municipal separate storm sewer systems to enact ordinances, and to develop and implement programs to effectuate the EPA's storm water clean-
- Phase II restricts the legislative processes of the States and local governments, treating them as "regional offices" or "administrative agencies" of the EPA.

General Concerns

- Designation of MS4 counties is arbitrarily based on population size, not on water quality issues.
- The One-Acre threshold to trigger automatic permitting of Construction Activities Regulations are not based on adverse water quality impacts.
- The proposed rules are vague and appear to "paint a broad brush" over the issue of water quality.
- EPA's assumption that Texas counties have regulatory authority to carry out the requirements of Phase II.
- Texas counties were not covered under Phase I and the cost of implementing Phase II could be enormous to the local tax payer.

Texas Counties Lack of Regulatory Authority

- Texas counties possess only such powers as are conferred by the state constitution or laws.
- Texas counties lack the authority to enact the ordinances and implement all of the regulatory requirements that Phase II requires.

Phase II Violates the Tenth Amendment

- Phase II requires county owners/operators of small municipal treatment plants to enact local ordinances, and to develop and implement programs to which the State and EPA are not bound.
- Phase II restricts the legislative processes of the State and local governments, and the "regional offices" or "administrative agencies" of EPA.

General Concerns

- Designation of MSA counties is arbitrary and not based on water quality impacts.
- The One-Acre threshold to trigger automatic permitting of CDDs is not based on adverse water quality impacts.
- The proposed rules are vague and appear to "paint a broad brush" over the entire State.
- EPA's assumption that Texas counties have regulatory authority to carry out the requirements of Phase II.
- Texas counties were not covered under Phase I and the cost of implementing Phase II could be enormous to the local tax payer.



Sabine County Sheriff's Department

P.O. Box 848 • Hemphill, Texas 75848
Office (409) 787-2288 • Fax (409) 787-2150

Tom Phillips
Sheriff

**LAW ENFORCEMENT
DAILY JAIL COUNT/AVERAGE FOR 01-01-97 TO 09-21-97**

AVERAGE DAILY POPULATION COUNT : 14

BOOKINGS: _____387

**LAW ENFORCEMENT
DAILY JAIL COUNT/AVERAGE FOR 01-01-98 TO 09-21-98**

AVERAGE DAILY POPULATION COUNT: 15

BOOKINGS : _____472

9-28-98 Jail Population - 18

Vol EE Pg 332



Sabine County Sheriff's Department

P.O. Box 848 • Hemphill, Texas 75948
Office (409) 787-2286 • Fax (409) 787-2150

**Tom Phillips
Sheriff**

NEW VEHICLES

61-- 1998 CROWN VIC ----- MILAGE 2,400

62-- 1998 CROWN VIC ----- MILAGE 6,232

63-- 1998 CROWN VIC ----- MILAGE 753

64-- 1998 FORD EXPEDITION ----- MILAGE 850

65-- 1998 CROWN VIC ----- MILAGE 213

66-- 1997 JEEP ----- MILAGE 30,112

**THE SIX (6) VEHICLES OF THE SABINE COUNTY
SHERIFF'S DEPARTMENT HAVE A COMBINED
TOTAL MILAGE OF --- 40,560**

OLD VEHICLES

65-- 1994 CROWN VIC -----MILAGE 110,926

66-- 1994 CROWN VIC -----MILAGE 137,638

**THE TWO (2) VEHICLES OF THE SABINE COUNTY
SHERIFF'S DEPARTMENT HAVE A COMBINED
TOTAL MILAGE OF --- 248,564**

TOTAL MILAGE OF ALL VEHICLES -----289,124

Vol EE Pg 333



Tom Phillips
Sheriff

ACCUMULATED COMP-TIME FOR DEPUTIES

WILLIAM REK	489.05
YVETTE HOLMAN	651.43
TERRY VAUGHN	599.31
JAMES E. WILLIAMS	286.17
BRUCE WHITE	515.37
FRANK ERIMAS	681.10

Vol EE Pg 334

FINANCIAL REPORT
SEPTEMBER 25, 1998

FUND	BALANCE 08/21/98	RECEIPTS	DISBURSEMENT	BALANCE 09/25/98
ROAD & BRIDGE #1	85,429.36	7,164.29	12,816.39	79,777.26
ROAD & BRIDGE #2	78,904.27	9,189.74	7,299.03	80,794.98
ROAD & BRIDGE #3	88,903.58	7,524.19	18,871.16	77,556.61
ROAD & BRIDGE #4	52,592.51	8,317.94	11,917.81	48,992.64
ROAD & BRIDGE SPECIAL I	48.09	-0-	34.58	13.51
BALANCE AS OF 09/25/98				287,135.00

Vol EE Pg 335

FINANCIAL REPORT
SEPTEMBER 25, 1998

FUND	BALANCE 08/21/98	RECEIPTS	DISBURSEMENTS	BALANCE 09/25/98
GENERAL	583,208.28	129,920.47	241,446.26	471,682.49
CRIMINAL JUSTICE PLANNING	118.00	46.57	11.80	152.77
LAW ENFORCEMENT OFFICERS ADMINISTRATIVE	16.00	5.31	1.60	19.71
LAW ENFORCEMENT OFFICERS CONTINUING EDUCATION	26.00	8.62	2.60	32.02
LAW ENFORCEMENT MANAGE- MENT INSTITUTE	8.00	3.15	.80	10.35
COMPENSATION TO VICTIMS OF CRIME	2,837.78	2,550.01	283.78	5,104.01
GENERAL REVENUE	34.00	13.28	3.40	43.88
ARREST FEES	1,174.71	923.01	-0-	2,097.72
JUDICIAL AND COURT PERSONNEL TRAINING	158.05	146.60	15.80	288.85
OPERATOR'S AND CHAUFFEUR'S LICENSE	125.00	75.00	12.50	187.50
COMPREHENSIVE REHABILITATION	5.00	-0-	.50	4.50
BREATH ALCOHOL TESTING	-0-	-0-	-0-	-0-
RECORD MANAGEMENT FEE	11,761.31	231.17	-0-	11,992.48
COURTHOUSE SECURITY FEE	7,668.80	785.84	-0-	8,454.64
CONSOLIDATED COURT COST	2,719.88	2,734.96	271.99	5,182.85
FUGITIVE APPREHENSION	705.26	711.48	70.53	1,346.21
JUVENILE CRIME AND DELINQUENCY	35.49	35.60	3.55	67.54
CIVIL LEGAL SERVICES INDIGENT	155.00	150.00	7.75	297.25
TIME PAYMENT	251.29	182.27	251.29	182.27
BALANCE AS OF 09/25/98				507,147.04

Vol EE Pg 336

FINANCIAL REPORT

SEPTEMBER 25, 1998

FUND	BALANCE 08/21/98	RECEIPTS	DISBURSEMENTS	BALANCE 09/25/98
DEBT SERVICE	6,101.09	25.91	5,885.00	242.00
ANTICIPATION NOTES	122,245.78	517.34	8,779.93	113,983.19
RECORD RETENTIONS	20,986.97	1,490.26	1,370.50	21,106.73
COMMUNITY DEVELOPMENT PROGRAM GRANT THOMAS JOHNSON SEWER	500.00	-0-	-0-	500.00
HOTEL/MOTEL TAX	150,263.95	713.63	1,684.10	149,293.48
ECONOMICALLY DISTRESSED AREA PROGRAM-TEXAS WATER DEVELOPMENT BOARD GRANT	296.08	1.26	-0-	297.34
PR BOND PROGRAM GRANT III-SALARIES	922.80	4,045.00	922.80	4,045.00

Vol EE Pg 337

FEEES COLLECTED IN August, 1998

THOMAS J. HAMILTON, JUSTICE OF THE PEACE PRECINCT #1, PLACE 1	\$ 2,438.15
DANIEL FEATHERSTON, JUSTICE OF THE PEACE PRECINCT #2, PLACE 1	5,658.84
TANYA WALKER, DISTRICT CLERK	2,314.00
JANICE MCDANIEL, COUNTY CLERK	10,637.15
TOTAL	\$21,048.14

Vol EE Pg 338

**TAMMY REEVES, RTA
TAX ASSESSOR/COLLECTOR
P.O. DRAWER 310
HEMPHILL, TX. 75948
(409)787-2257 Fax (409)787-4753
Pineland Substation (409)584-3909**

**SABINE COUNTY TAX OFFICE MONTHLY REPORT OF
SABINE COUNTY TAX COLLECTIONS**

August '98

	Monthly	Year-to-Date	Balance Due
1997 COLLECTIONS:			
County Tax Levy		\$1,107,003.11	60,768.07
+ Supplements	167.19	11,281.54	60,935.26
- Adjustments	(290.07)	(16,747.39)	60,645.19
Early Pmt. Disc.		(17,791.76)	
Current Del.	(10,285.07)	(84,452.85)	50,360.12
Penalty & Interest	1,426.99	10,640.91	51,787.11
15% Additional Penalty	1,320.97	2,535.42	53,108.08
Collections		(960,136.50)	
Refunds		792.27	
Refund P&I		(16.67)	
		Percentage of 1997 taxes collected: 95.18%	
DELINQUENT COLLECTIONS:			
Balance Due		206,148.98	152,776.04
+ Supplements		311.66	
Adjustments	(2,141.12)	(14,572.20)	150,634.92
Refunds		183.73	
Refund P&I		(13.11)	
Del. Collections	(4,343.27)	(45,767.41)	146,291.65
Penalty & Interest	2,260.71	20,254.76	
15% Additional Penalty	990.56	9,899.48	

Note: All year-to-date totals are cumulative from October 1, 1997. The beginning balance of delinquents is base tax only. It does not reflect penalty & interest, therefore, the ending balance is base tax only.

I hereby certify with my official seal of office that the above figures are true and correct records of collections and adjustments through the Sabine County Tax Office.

Tammy Reeves

Tammy Reeves, Sabine County Tax A/C

Sept. 2, 1998

Date

Vol EE Pg 339

**TAMMY REEVES, RTA
TAX ASSESSOR/COLLECTOR
P.O. DRAWER 310
HENSFELL, TX. 75948
(409)787-2257 Fax (409)787-4753
Pineland Substation (409)584-3909**

**SABINE COUNTY TAX OFFICE MONTHLY REPORT OF
SABINE COUNTY STATE COLLECTIONS**

August '98

	Monthly	Year-to-Date	Balance Due
BALANCE DUE		\$1,221.31	670.30
+ Supplements		.76	
-Adjustments	(100.41)	(633.37)	569.89
Collections		(18.81)	
Penalty & Interest		37.91	
15% Additional Penalty		8.32	

Note: All year-to-date totals are cumulative from October 1, 1997. The beginning balance of delinquents is base tax only. It does not reflect penalty & interest, therefore, the ending balance is base tax only.

I hereby certify with my official seal of office that the above figures are true and correct records of collections and adjustments through the Sabine County Tax Office.

Tammy Reeves
Tammy Reeves, Sabine County Tax A/C

Sept. 2, 1998
Date

Vol EE Pg 340



VOL. EE PAGE 302
 JANICE MEDANTELL COUNTY CLERK
 BY [Signature]
 Deputy

TAMMY REEVES, RTA
SABINE COUNTY TAX A/C
P O BOX 310
HEMPHILL, TX. 75948
(409)787-2257 Fax (409)787-4753
PINELAND SUBSTATION (409)584-3909

Monthly Report of Fees Collected by Tammy Reeves, Tax Assessor & Collector for Sabine County, Sabine County Hospital District, City of Pineland, Hemphill ISD and West Sabine ISD.

August '98

	RECEIPTS	DISBURSEMENTS TO COUNTY	DISBURSEMENTS TO OTHER AGENCY
COUNTY FEES:			
Ad Valorem.....	-0-	-0-	-0-
Del. Ad Valorem.....	11,880.38	11,880.38	-0-
Ad Valorem P & I.....	5,999.23	3,687.70	2,311.53
Hospital.....	-0-	-0-	-0-
Del. Hospital.....	3,452.34	34.53	3,417.81
Hospital P&I.....	1,817.90	11.36	1,806.54
Hemphill ISD.....	-0-	-0-	-0-
Del. Hemphill.....	29,622.66	296.23	29,326.43
Hemphill P & I.....	16,060.39	101.71	15,958.68
Pineland City.....	-0-	-0-	-0-
Del. Pineland City.....	184.02	-0-	184.02
Pineland City P & I.....	98.66	-0-	98.66
West Sabine ISD.....	-0-	-0-	-0-
Del. West Sabine.....	6,537.31	-0-	6,537.31
West Sabine P & I.....	2,788.62	-0-	2,788.62
Hemphill CED.....	1,173.53	11.74	1,161.79
Hemphill CED P&I.....	1,308.11	9.84	1,298.27
West Sabine CED.....	-0-	-0-	-0-
West Sabine CED P&I.....	-0-	-0-	-0-
Tax Certificates.....	10.00	5.00	5.00
Copies.....	1.50	1.50	-0-
NSF Fees.....	25.00	25.00	-0-
County Alcohol.....	-0-	-0-	-0-
County Other.....	58.99	17.21	41.78
Fax & Phone.....	-0-	-0-	-0-
Boat & Motor Reg.....	965.00	96.50	868.50
County Interest.....	200.60	200.60	-0-
TOTALS:	82,184.24	16,379.30	65,804.94
DEALER TAXES:			
Special Dealer Inv.....	161.06	-0-	-0-
Dealer Interest.....	8.57	-0-	-0-
TOTALS:	169.63	-0-	-0-
SALES TAX FEES:			
Boat & Mtr. Sales Tax..	1,235.63	61.79	1,173.84
Motor Veh. Sales Tax...	18,676.82	-0-	18,676.82
TOTALS:	19,912.45	61.79	19,850.66
STATE FEES:			
Registration.....	35,843.73	16,042.17	14,901.36
Road & Bridge.....	7,520.00	6,334.10	195.90
Title Applications.....	1,846.00	710.00	1,136.00
Young Farmers.....	260.00	-0-	260.00
State Alcohol.....	-0-	9.00	294.00
State Interest.....	44.12	44.12	-0-
TOTALS:	45,513.85	23,139.39	16,787.26
COMPLETE TOTALS:	147,780.17	39,580.48	102,442.86

